

AGENDA
HARMONY CITY COUNCIL
Regular Meeting

June 13, 2017
7:00 P.M.

Council Room
Community Center

1. Call To Order
2. Roll Call
3. Public Forum
4. Consent Agenda
 - a. Minutes
 - b. Claims
 - c. Administrator Report
 - d. Financial Report
 - e. CD
 - f. Liquor License
 - g. Arts Board Appointment
 - h. Conservation Club
5. Reports
 - a. Planning and Zoning Board
 - b. 2017 Street and Utility Project
 - c. Hammel House Development
 - d. Fillmore Central Schools
 - e. Lot Sale
 - f. Personnel Committee
 - g. Building & Maintenance Report
 - h. EDA Board
 - i. Park Board
 - j. Library Board
 - k. Arts Board
6. Adjourn

**BACKGROUND INFORMATION
HARMONY CITY COUNCIL
REGULAR MEETING**

**June 13, 2017
7:00 P.M.**

**Council Room
Community Center**

1. Call To Order
2. Roll Call
3. Public Forum
4. Consent Agenda
 - a. Minutes
 - b. Claims
 - c. Administrator Report-See report.
 - d. Financial Report-See report.
 - e. CD-Cash in CD #43609.
 - f. Liquor License Renewals-Wheelers, Golf Club, On the Crunchy Side, Estelle's.
 - g. Arts Board Appointment-Approve Collen Dahle to arts board for a term to expire on 12/31/19.
 - h. Conservation Club-Approve temporary liquor license and noise permit for beer garden from July 2-5.
5. Reports
 - a. Planning and Zoning Board-Hammel House Development approve rezoning recommendation and plat. Update on Renewable Energy Ordinance.
 - b. 2017 Street and Utility Project-Approve Change Order 1 for project.
 - c. Hammel House Development-Approve plans and specifications and put project out for bid.
 - d. Fillmore Central Schools-Approve plan and land swap. See enclosed drawings.
 - e. Lot Sale-Approve lot sale to Harmony Foods.
 - f. Personnel Committee-Approve employment changes.
 - g. Building & Maintenance Report
 - h. EDA Board
 - i. Park Board
 - j. Library Board
 - k. Arts Board
6. Adjourn

MAY 9, 2017

REGULAR MEETING

HARMONY CITY COUNCIL

A Regular meeting of the Harmony City Council was called to order by Mayor Steve Donney at 7:00 PM. Present were Mayor Donney, Councilmembers Kyle Morem, Steve Sagen, Debbie Swenson and Lynn Mensink; Attorney Richard Nethercut, Administrator Jerome Illg, Chris Johnson, Julie Lau, Charlie Warner, Hannah Wingert and Eileen Schansberg.

PUBLIC FORUM:

No One appeared.

CONSENT AGENDA:

Motion by Swenson and seconded by Morem to approve the Consent Agenda which consisted of the Minutes to the April 11, 2017 Council meeting; the Claims, Administrator's Report, Financial Report, Liquor License Renewal for the StopLight Bar, cashing in CD #43608 to the General Fund, Investment Policy Guideline for the City of Harmony and Resolution #17-03: A LOCAL GOVERNMENT RESOLUTION LCCMR ENVIRONMENT AND NATURAL RESOURCES TRUST FUND APPLICATION.

Voting for the Consent Agenda was: Swenson, Mensink, Morem, Sagen and Donney.

Voting against the Consent Agenda was: No One

Abstained from voting was: No One

Absent from voting was: No One

The motion passed and Consent Agenda approved along with Resolution #17-03 being adopted.

FIREMEN'S MEMORIAL:

A diagram for a Firemen's Memorial to be constructed at the Fire hall was viewed. Motion by Swenson and seconded by Sagen to approve the project on city property. All present voting yes. Motion carried.

BUILDING & MAINTENANCE:

Rochester Plumbing has been televising sewer lines prior to the upcoming Construction Projects. A sewer main will to be incorporated with the 2017 street project to include 4th Street SW.

EDA BOARD:

Report given by Swenson.

- City Logo has been dwindled down to one with a few changes. Tulip Tree Studios will proceed with the changes and incorporate coloring.

-Harmony Vet Clinic has expressed interest into expanding onto 3 lots in the Industrial Park. A 2 year option contract has been signed.

-Harmony Spirits Project is still moving forward.

PARK BOARD:

Report given by Mensink.

-Contributed for the Jim Busta Band for 4th of July Celebration

-Toured parks for maintenance issues. The Hobo Park is in bad shape and the Hobos are beyond repair. They need to be removed for safety sake. Administrator Illg will be visiting with Slim Maroushek regarding the situation.

LIBRARY BOARD:

Report given by Mensink.

-Received a Harmony Community Foundation not to exceed \$5,000 matching grant to replace the outdoor patio on the north side of the Library. The Library Board may need to request money from the City to complete the project. Discussion held on the need for elevations to be checked and make sure proper drainage is done. It was suggested that a project plan be submitted for the council to review prior to proceeding with the plan. TLC Construction would be removing the Concrete. Stateline ICF has submitted a cost estimate to Stephanie Silvers. Administrator Illg will contact Dennis Barnes as Stateline ICF to review the project plans.

ARTS BOARD:

Report given by Mensink.

PLANNING & ZONING:

Report given by Administrator Illg.

The board met and reviewed some preliminary ordinance drafts for a renewal energy ordinance. The Planning and Zoning Board is reviewing the information and working with Attorney Schieber to draft an ordinance for consideration. The board will be meeting within the next couple months to review and consider approval of an ordinance.

Discussion held on Fillmore Central Schools relocating the garage to the West of the Community Center Parking lot. The Community Gardens may lose a little bit of space. Administrator Illg stated the committee asked the school to incorporate into their architectural drawing the Medical Helipad for Emergency Services. A plan has not been received back from the school yet.

Mayor Donney discussed an amendment to the new Investment Guideline. Mayor Donney felt that the Super Now account and the CD's should be moved to 100% instead of 50%. Motion by Donney and seconded by Sagen to make the preceding changes to the Investment Policy. All present voting yes. Motion carried.

Upon no further business, Mayor Donney adjourned the meeting.

Mayor Steve Donney

Eileen Schansberg, Deputy Clerk

CITY OF HARMONY
City Council Claims for Review

June 13, 2017

Fund Descr	Department	Object of Expense	Vendor	Comments	Amount
Fund 101 General Fund					
General Fund		Union Central Pension Fund	CENTRAL PENSION FUND	pension contribution Brian/Chris	\$176.00
General Fund		Health Insurance	I.U.O.E. LOCAL 49 FRINGE BENEF	Health Ins-Chris	\$1,170.00
General Fund		Union Dues	IUOE LOCAL #49	Union dues-Brian/Chris	\$68.00
General Fund		NCPERS Insurance	NCPERS GROUP LIFE INS	511800	\$48.00
General Fund		Life Insurance	USABLE LIFE	101421301G	\$81.50
General Fund	Administration	Dues	MCFOA	17-18 dues	\$40.00
General Fund	Administration	Dues	MN ASSOC OF SMALL CITIES	17-18 dues	\$609.45
General Fund	Administration	General Operating Supplies	1 SOURCE	copy paper & dryliner	\$53.54
General Fund	Administration	Motor Fuels/Lubricants	KWIK TRIP,INC	gas-van	\$31.31
General Fund	Administration	Postage	DORNINK, DAN	postage reimbursed for nuisance letters	\$39.54
General Fund	Administration	Worker s Comp Insurance Pre	LMCIT	work comp 2017/2018	\$290.97
General Fund	Animal Control	Small Tools and Minor Equip	KINGSLEY MERCANTILE	dog collar	\$6.29
General Fund	Animal Control	Worker s Comp Insurance Pre	LMCIT	work comp 2017/2018	\$98.53
General Fund	Civil Defense	Telephone	HARMONY TELEPHONE COMPANY	Sirens/DSL Phone	\$89.25
General Fund	Community Center	Building Repair Materials	ELAN FINANCIAL SERVICES	panic bar caps (4)	\$74.04
General Fund	Community Center	Building Repair Materials	KINGSLEY MERCANTILE	change out regulator for leaks	\$176.91
General Fund	Community Center	Cleaning Supplies	DALCO	paper towels	\$78.56
General Fund	Community Center	Cleaning Supplies	DALCO	soap/ paper towels/mop kit	\$119.82
General Fund	Community Center	Cleaning Supplies	DALCO	glas cleaner	\$23.36
General Fund	Community Center	Contractual Services	CUSTOM COMMUNICATIONS, INC	Fire alarm contract	\$94.50
General Fund	Community Center	Electric Utilities	HARMONY PUBLIC UTILITIES	Elec-Comm Ctr	\$1,153.32
General Fund	Community Center	Gas Utilities	MINNESOTA ENERGY	monthly gas-Comm Ctr	\$120.73
General Fund	Community Center	General Operating Supplies	KINGSLEY MERCANTILE	flag rope/snaps	\$24.58
General Fund	Community Center	Landscaping Materials	HARMONY GARDENS & FLORAL, LLC	flower pots	\$79.98
General Fund	Community Center	Motor Fuels/Lubricants	KWIK TRIP,INC	gas-Terry pickup	\$23.64
General Fund	Community Center	Other Equipment	KINGSLEY MERCANTILE	Library Furnaces	\$8,511.32
General Fund	Community Center	Other Equipment	KINGSLEY MERCANTILE	programmable thermostat	\$300.86
General Fund	Community Center	Other Equipment	MOREM ELECTRIC, INC	wiring for Lib AC/Furnaces	\$470.25
General Fund	Community Center	Sewer Utilities	HARMONY PUBLIC UTILITIES	sewer-Comm Ctr	\$39.50
General Fund	Community Center	Telephone	HARMONY TELEPHONE COMPANY	Admin Phone/DSL	\$222.33
General Fund	Community Center	Water Utilities	HARMONY PUBLIC UTILITIES	water-Comm Ctr	\$24.33
General Fund	Community Center	Worker s Comp Insurance Pre	LMCIT	work comp 2017/2018	\$1,691.29
General Fund	Community Development	Engineering Fees	STANTEC CONSULTING SERVICES, I	2017 Street Improve Engineering	\$4,853.65
General Fund	Community Development	Engineering Fees	STANTEC CONSULTING SERVICES, I	Walnut Farms Engineering	\$20,046.16
General Fund	Community Events	Program Services	ONE TIME VENDOR	printer cartridges	\$30.00
General Fund	Community Events	Program Services	ONE TIME VENDOR	supplies for Sr Program	\$44.34

CITY OF HARMONY
City Council Claims for Review

06/09/17 1:59 PM

Page 2

June 13, 2017

Fund Descr	Department	Object of Expense	Vendor	Comments	Amount
General Fund	Community Events	Program Services	DOWE, BETTY	Sr Programs	\$32.00
General Fund	Council	Worker s Comp Insurance Pre	LMCIT	work comp 2017/2018	\$78.61
General Fund	Ice & Snow Removal	Worker s Comp Insurance Pre	LMCIT	work comp 2017-2018	\$149.15
General Fund	Legal Services	Legal Fees	NETHERCUT SCHIEBER ATTORNEYS	Legal services for May	\$725.00
General Fund	Personnel Administration	General Operating Supplies	CULLIGAN	wellness program	\$49.40
General Fund	Personnel Administration	General Operating Supplies	ILLG, JEROME	wellness program	\$66.80
General Fund	Personnel Administration	General Operating Supplies	SCHANSBERG, EILEEN	Wellness program	\$155.52
General Fund	Personnel Administration	Management Fees	MINN MUNICIPAL UTILITIES ASSOC	Drug/Alcohol testing 2017 Consortium	\$93.00
General Fund	Personnel Administration	Taxes, Licenses & Permits	US DEPT OF THE TREASURY	PCORI Fees 2017	\$20.34
General Fund	Police Department	Motor Fuels/Lubricants	SEVERSON OIL CO.	gas-squad	\$333.91
General Fund	Police Department	Repair/Maint Vehicles	TORGERSON AUTO	routine service-Squad	\$45.67
General Fund	Police Department	Telephone	HARMONY TELEPHONE COMPANY	Police Phone	\$47.59
General Fund	Public Works Buildings	Cleaning Supplies	DALCO	paper toweling	\$58.54
General Fund	Public Works Buildings	Electric Utilities	HARMONY PUBLIC UTILITIES	Elec-Shop	\$145.77
General Fund	Public Works Buildings	Electric Utilities	HARMONY PUBLIC UTILITIES	water-Shop	\$16.87
General Fund	Public Works Buildings	Gas Utilities	MINNESOTA ENERGY	monthly gas-Shop	\$44.01
General Fund	Public Works Buildings	General Operating Supplies	MISSISSIPPI WELDERS SUPPLY CO	Oxygen cylinder	\$16.43
General Fund	Public Works Buildings	Repair/Maint Bldg/Structures	SPRING VALLEY OVERHEAD DOOR	check shop door opener	\$75.00
General Fund	Public Works Buildings	Repair/Maint Bldg/Structures	SPRING VALLEY OVERHEAD DOOR	install new door opener	\$980.00
General Fund	Public Works Buildings	Small Tools and Minor Equip	KINGSLEY MERCANTILE	putty/spade	\$13.78
General Fund	Public Works Buildings	Worker s Comp Insurance Pre	LMCIT	work comp 2017/2018	\$369.10
General Fund	Streets	General Operating Supplies	KINGSLEY MERCANTILE	screws	\$2.76
General Fund	Streets	Motor Fuels/Lubricants	SEVERSON OIL CO.	gas/diesel tractor/Chris' truck	\$224.15
General Fund	Streets	Other Equipment	HAMMELL EQUIPMENT	tractor loader	\$6,000.00
General Fund	Streets	Postage	ILLG, JEROME	reimburse postage-Street Pjt Contracts	\$8.50
General Fund	Streets	Repair/Maint Other Improve	CHUCK LARSON DUST CONTROL	2950 ft of dust control 2017	\$3,422.00
General Fund	Streets	Repair/Maint Vehicles	BLAINES AUTO	oil chg service 1-Ton	\$49.97
General Fund	Streets	Street Maint Materials	MIDWEST PATCH	cold patch	\$716.80
General Fund	Streets	Taxes, Licenses & Permits	FILLMORE COUNTY TREASURER	utility permit for 1st Ave	\$100.00
General Fund	Streets	Worker s Comp Insurance Pre	LMCIT	work comp 2017/2018	\$745.76
General Fund	Visitor Center	Cleaning Supplies	DALCO	soap/toweling	\$40.76
General Fund	Visitor Center	Electric Utilities	HARMONY PUBLIC UTILITIES	Elec-Vis Ctr	\$147.12
General Fund	Visitor Center	Gas Utilities	MINNESOTA ENERGY	monthly gas-Vis Ctr	\$71.34
General Fund	Visitor Center	Landscaping Materials	HARMONY GARDENS & FLORAL, LLC	flower pots	\$139.96
General Fund	Visitor Center	Motor Fuels/Lubricants	KWIK TRIP,INC	gas-Terry pickup	\$23.63
General Fund	Visitor Center	Sewer Utilities	HARMONY PUBLIC UTILITIES	sewer-Vis Ctr	\$32.90
General Fund	Visitor Center	Small Tools and Minor Equip	KINGSLEY MERCANTILE	hose/caulking	\$59.97
General Fund	Visitor Center	Water Utilities	HARMONY PUBLIC UTILITIES	Water-Vis Ctr	\$20.15

CITY OF HARMONY
City Council Claims for Review

June 13, 2017

Fund Descr	Department	Object of Expense	Vendor	Comments	Amount
General Fund	Visitor Center	Worker s Comp Insurance Pre	LMCIT	work comp 2017/2018	\$422.82
Fund 101 General Fund					\$56,750.93
Fund 202 CDBG Rehab Loan Program					
CDBG Rehab Loan Progr	Loan Programs	Management Fees	CEDA	retainer services 2017 SCDP grant admin	\$987.28
Fund 202 CDBG Rehab Loan Program					\$987.28
Fund 211 Library Fund					
Library Fund	Library	General Operating Supplies	KINGSLEY MERCANTILE	paint brushes	\$8.57
Library Fund	Library	Media-Audio	INGRAM LIBRARY SERVICES, INC	audio books on CD	\$195.20
Library Fund	Library	Media-Books	BAKER & TAYLOR	books	\$27.31
Library Fund	Library	Media-Books	BAKER & TAYLOR	books	\$184.64
Library Fund	Library	Media-Books	BAKER & TAYLOR	books	\$87.13
Library Fund	Library	Media-Books	CENTER POINT LARGE PRINT	Lg print books	\$43.14
Library Fund	Library	Media-Books	FILLMORE CENTRAL SCHOOLS	FC Yearbook	\$45.00
Library Fund	Library	Media-Books	GALE GROUP	Lg print books	\$122.36
Library Fund	Library	Media-Video	AMAZON CAPITAL SERVICES	dvd	\$7.83
Library Fund	Library	Media-Video	AMAZON CAPITAL SERVICES	dvds	\$44.35
Library Fund	Library	Media-Video	AMAZON CAPITAL SERVICES	dvds	\$17.27
Library Fund	Library	Office Accessories	DEMCO, INC	covers for paperback books	\$84.34
Library Fund	Library	Office Accessories	QUILL CORPORATION	Receipt paper	\$114.99
Library Fund	Library	Postage	SOUTHEASTERN LIBRARIES COOP	postage on mailers	\$24.38
Library Fund	Library	Printed Forms	SOUTHEASTERN LIBRARIES COOP	Mailers & SMS notices	\$16.70
Library Fund	Library	Program Services	KINGSLEY MERCANTILE	top soil for gardens	\$74.75
Library Fund	Library	Software Service Fees	SOUTHEASTERN LIBRARIES COOP	Basic Services & PC Support	\$577.36
Library Fund	Library	Telephone	HARMONY TELEPHONE COMPANY	Library Phone	\$45.76
Library Fund	Library	Worker s Comp Insurance Pre	LMCIT	work comp 2017/2018	\$484.24
Fund 211 Library Fund					\$2,205.32
Fund 222 Fire Fund					
Fire Fund	Fire Department	Motor Fuels/Lubricants	S & S AUTOMOTIVE	diesel exhaust	\$14.99
Fire Fund	Fire Department	Motor Fuels/Lubricants	SEVERSON OIL CO.	gas/diesel-Fire truck	\$156.47
Fire Fund	Fire Department	Other Equipment	CLAREY S SAFETY EQUIPMENT, INC	Fire coats (4) & pants (4)-Grant	\$4,945.00
Fire Fund	Fire Department	Repair/Maint Machinery/Equip	MACQUEEN EMERGENCY GROUP	repair of fire pumper	\$1,112.00
Fire Fund	Fire Department	Repair/Maint Other Equipment	EQUIPMENT MANAGEMANT CO	comprehensive service agreement	\$575.00
Fire Fund	Fire Department	Small Tools and Minor Equip	KINGSLEY MERCANTILE	booster pack/cord/paint	\$136.77
Fire Fund	Fire Department	Small Tools and Minor Equip	S & S AUTOMOTIVE	battery charger	\$299.99
Fire Fund	Fire Department	Worker s Comp Insurance Pre	LMCIT	work comp 2017/2018	\$4,243.94

CITY OF HARMONY
City Council Claims for Review

June 13, 2017

Fund Descr	Department	Object of Expense	Vendor	Comments	Amount
Fire Fund	Fire Stations and Bldgs	Cleaning Supplies	CROP PRODUCTION SERVICES	can liners	\$56.34
Fire Fund	Fire Stations and Bldgs	Electric Utilities	HARMONY PUBLIC UTILITIES	Elec-Firehall	\$251.64
Fire Fund	Fire Stations and Bldgs	Gas Utilities	MINNESOTA ENERGY	monthly gas-Firehall	\$35.68
Fire Fund	Fire Stations and Bldgs	Repair/Maint Bldg/Structures	KINGSLEY MERCANTILE	repair ice machine	\$566.05
Fire Fund	Fire Stations and Bldgs	Sewer Utilities	HARMONY PUBLIC UTILITIES	sewer-Firehall	\$21.50
Fire Fund	Fire Stations and Bldgs	Telephone	HARMONY TELEPHONE COMPANY	Fire Phone	\$43.60
Fire Fund	Fire Stations and Bldgs	Water Utilities	HARMONY PUBLIC UTILITIES	water-Firehall	\$12.93
Fund 222 Fire Fund					\$12,471.90
Fund 223 Ambulance Fund					
Ambulance Fund		Ambulance Accounts Receivab	AMBULANCE REFUNDS	over payment J Taubert	\$171.32
Ambulance Fund	Ambulance Service	Contractual Services	ZOLL MEDICAL CORP.	Zoll X Maintenance contract	\$255.00
Ambulance Fund	Ambulance Service	General Operating Supplies	KINGSLEY MERCANTILE	batteries	\$15.78
Ambulance Fund	Ambulance Service	Medical and Dental Fees	GOLD CROSS AMBULANCE	Intercept chgs M Fairchild	\$180.20
Ambulance Fund	Ambulance Service	Medical and Dental Fees	WINNESHIEK CO. MEMORIAL HOSPIT	Intercept chgs K D	\$240.00
Ambulance Fund	Ambulance Service	Motor Fuels/Lubricants	KWIK TRIP,INC	diesel-Amb	\$339.45
Ambulance Fund	Ambulance Service	Other Equipment	NASCO FORT ATKINSON	ECG advanced Manikin (be reimbursed)	\$6,386.86
Ambulance Fund	Ambulance Service	Postage	VERIZON WIRELESS	monthly cell service	\$47.59
Ambulance Fund	Ambulance Service	Repair/Maint Vehicles	DECORAH AUTO CENTER	full service for Amb	\$108.90
Ambulance Fund	Ambulance Service	Small Tools and Minor Equip	KINGSLEY MERCANTILE	flashlight	\$34.99
Ambulance Fund	Ambulance Service	Software Service Fees	IMAGE TREND INC	Software support-Amb	\$400.00
Ambulance Fund	Ambulance Service	Training Fees	CHATFIELD EMS TRAINING	EMT Training Domingo Kingsley	\$950.00
Ambulance Fund	Ambulance Service	Worker s Comp Insurance Pre	LMCIT	work comp 2017/2018	\$10,786.47
Fund 223 Ambulance Fund					\$19,916.56
Fund 251 Park Fund					
Park Fund	Parks	Building Repair Materials	KINGSLEY MERCANTILE	park bathroom supplies	\$50.54
Park Fund	Parks	Electric Utilities	HARMONY PUBLIC UTILITIES	Elec-Parks	\$172.77
Park Fund	Parks	Equipment Parts	DAKOTA SUPPLY GROUP	faucet repairs for Park bathrooms	\$58.27
Park Fund	Parks	General Operating Supplies	CROP PRODUCTION SERVICES	weed killer	\$48.41
Park Fund	Parks	General Operating Supplies	KINGSLEY MERCANTILE	park supplies	\$38.93
Park Fund	Parks	Landscaping Materials	HARMONY GARDENS & FLORAL, LLC	flower pots	\$419.89
Park Fund	Parks	Motor Fuels/Lubricants	KWIK TRIP,INC	gas-mowers	\$40.24
Park Fund	Parks	Motor Fuels/Lubricants	SEVERSON OIL CO.	gas-mowers	\$164.19
Park Fund	Parks	Other Rentals	ON SITE SANITATION	partial May portable toilet rental	\$12.85
Park Fund	Parks	Other Rentals	ON SITE SANITATION	portalbe toilet rental	\$72.00
Park Fund	Parks	Repair/Maint Other Improve	ON SITE SANITATION	tipped restroom	\$40.00
Park Fund	Parks	Repair/Maint Other Improve	R & J WOOD GOODS	broken leg replacement for 'Buddy Bench'	\$62.28

CITY OF HARMONY
City Council Claims for Review

June 13, 2017

Fund Descr	Department	Object of Expense	Vendor	Comments	Amount
Park Fund	Parks	Sewer Utilities	HARMONY PUBLIC UTILITIES	sewer-Parks	\$112.00
Park Fund	Parks	Sign Materials	AMERICAN LEGION POST #81	6 state flags/6 US flags	\$195.40
Park Fund	Parks	Water Utilities	HARMONY PUBLIC UTILITIES	water-Parks	\$139.12
Park Fund	Parks	Worker s Comp Insurance Pre	LMCIT	work comp 2017/2018	\$893.33
Fund 251 Park Fund					\$2,520.22
Fund 601 Water Fund					
Water Fund		MN Water Testing Fee Due	MN DEPT OF HEALTH	water testing fees	\$949.00
Water Fund	Water Utility Administratio	Engineering Fees	STANTEC CONSULTING SERVICES, I	Garden Rd water main looping	\$72.00
Water Fund	Water Utility Administratio	Worker s Comp Insurance Pre	LMCIT	work comp 2017/2018	\$72.74
Water Fund	Water Utility Operation	Chemicals and Chem Products	HACH COMPANY	flouride	\$121.16
Water Fund	Water Utility Operation	Chemicals and Chem Products	HAWKINS WATER TREATMENT GROU	chlorine cylinders	\$20.00
Water Fund	Water Utility Operation	Electric Utilities	HARMONY PUBLIC UTILITIES	Elec-pumphouses	\$880.80
Water Fund	Water Utility Operation	Gas Utilities	MINNESOTA ENERGY	monthly gas-pumphouses 2	\$25.47
Water Fund	Water Utility Operation	Laboratory & Testing Fees	UTILITY CONSULTANTS, INC	Water Testing Lab Fees	\$40.00
Water Fund	Water Utility Operation	Repair/Maint Other Improve	TLC EXCAVATING	repair gate valve-golf course sprinkler	\$800.00
Water Fund	Water Utility Operation	Worker s Comp Insurance Pre	LMCIT	work comp 2017/2018	\$1,923.56
Fund 601 Water Fund					\$4,904.73
Fund 602 Sewer Fund					
Sewer Fund	Sewer Administration	Worker s Comp Insurance Pre	LMCIT	work comp 2017/2018	\$72.74
Sewer Fund	Sewer Operation	Chemicals and Chem Products	HAWKINS WATER TREATMENT GROU	chlorine cylinders	\$10.00
Sewer Fund	Sewer Operation	Chemicals and Chem Products	TEAM LABORATORY CHEM. CORP.	larvecide	\$135.00
Sewer Fund	Sewer Operation	Chemicals and Chem Products	TEAM LABORATORY CHEM. CORP.	weed killer	\$720.50
Sewer Fund	Sewer Operation	Electric Utilities	HARMONY PUBLIC UTILITIES	Elec-WWTP/Lifts	\$1,337.69
Sewer Fund	Sewer Operation	Gas Utilities	MINNESOTA ENERGY	monthly gas-WWTP	\$312.15
Sewer Fund	Sewer Operation	General Operating Supplies	KINGSLEY MERCANTILE	magnifying glass	\$10.49
Sewer Fund	Sewer Operation	Laboratory & Testing Fees	UTILITY CONSULTANTS, INC	Wastewater Testing Lab Fees	\$958.50
Sewer Fund	Sewer Operation	Repair/Maint Other Equipment	FIRST SYSTEMS TECHNOLOGY, INC	verification of Flow meter	\$670.00
Sewer Fund	Sewer Operation	Repair/Maint Other Improve	ROCHESTER PLUMBING & HEATING	locate Main for homes 4th St SW	\$893.00
Sewer Fund	Sewer Operation	Sewer Utilities	HARMONY PUBLIC UTILITIES	sewer-WWTP	\$1,563.20
Sewer Fund	Sewer Operation	Telephone	HARMONY TELEPHONE COMPANY	Lift Stations Dialer/DSL Phone	\$144.13
Sewer Fund	Sewer Operation	Utility Maint Materials	TEAM LABORATORY CHEM. CORP.	Lift Station degreaser	\$1,989.00
Sewer Fund	Sewer Operation	Water Utilities	HARMONY PUBLIC UTILITIES	water-WWTP	\$989.34
Sewer Fund	Sewer Operation	Worker s Comp Insurance Pre	LMCIT	work comp 2017/2018	\$4,245.20
Fund 602 Sewer Fund					\$14,050.94
Fund 603 Solid Waste Fund					

CITY OF HARMONY
City Council Claims for Review

June 13, 2017

Fund Descr	Department	Object of Expense	Vendor	Comments	Amount
Solid Waste Fund	Solid Waste Administration	Worker s Comp Insurance Pre	LMCIT	work comp 2017/2018	\$36.37
Solid Waste Fund	Solid Waste Operation	Worker s Comp Insurance Pre	LMCIT	work comp 2017/2018	\$223.72
Fund 603 Solid Waste Fund					\$260.09
Fund 604 Electric Fund					
Electric Fund		Utility Deposits	UTILITY DEPOSIT REFUND	Refund deposit to bill (D Rogich)	\$128.60
Electric Fund		Utility Deposits	UTILITY DEPOSIT REFUND	Refund deposit after Utilities Rogich	\$21.40
Electric Fund	Electric Utility Operation	Electric Power for Resale	MI ENERGY COOPERATIVE	power for resale	\$56,327.97
Electric Fund	Electric Utility Operation	Electric Utilities	HARMONY PUBLIC UTILITIES	Elec-Streetlighting	\$1,219.01
Electric Fund	Electric Utility Operation	Electric Utilities	HARMONY PUBLIC UTILITIES	Elec-town clock	\$12.66
Electric Fund	Electric Utility Operation	Motor Fuels/Lubricants	SEVERSON OIL CO.	gas-Brian's pickup	\$106.68
Electric Fund	Electric Utility Operation	Repair/Maint Other Improve	GOPHER STATE ONE CALL, INC	locates/no locates	\$21.60
Electric Fund	Electric Utility Operation	Repair/Maint Other Improve	MOREM ELECTRIC, INC	repair streetlight	\$62.00
Electric Fund	Electric Utility Operation	Repair/Maint Other Improve	MOREM ELECTRIC, INC	underground service upgrade for RunRigh	\$479.92
Electric Fund	Electric Utility Operation	Worker s Comp Insurance Pre	LMCIT	work comp 2017/2018	\$372.87
Electric Fund	Electric UtilityAdministratio	Miscellaneous	ENERGY REBATE	Energy Rebate L Slindee	\$25.00
Electric Fund	Electric UtilityAdministratio	Miscellaneous	ENERGY REBATE	Energy Rebate A Christianson	\$25.00
Electric Fund	Electric UtilityAdministratio	Worker s Comp Insurance Pre	LMCIT	work comp 2017/2018	\$109.12
Fund 604 Electric Fund					\$58,911.83
Fund 605 Storm Water Fund					
Storm Water Fund	Storm Water Administratio	Worker s Comp Insurance Pre	LMCIT	work comp 2017/2018	\$36.37
Storm Water Fund	Storm Water Operation	Motor Fuels/Lubricants	SEVERSON OIL CO.	diesel-sweeper	\$64.91
Storm Water Fund	Storm Water Operation	Worker s Comp Insurance Pre	LMCIT	work comp 2017/2018	\$74.57
Fund 605 Storm Water Fund					\$175.85
Fund 620 Economic Development Authority					
Economic Development	Economic Development	Taxes, Licenses & Permits	MN DEPT OF TRANSPORTATION	sign permit renewal	\$60.00
Economic Development	Economic Development	Telephone	HARMONY TELEPHONE COMPANY	EDA Phone	\$26.03
Economic Development	Economic Development	Worker s Comp Insurance Pre	LMCIT	work comp 2017/2018	\$109.12
Fund 620 Economic Development Authority					\$195.15
					\$173,350.80

ADMINISTRATOR'S REPORT

For the Period from May 9, 2017 to June 13, 2017

ADMINISTRATION

Have been working with MNDOT and Harmony Historical Society to get the approvals necessary for the installation of the historical sign project that they received a grant for. Process has taken long than anticipated.

Administered annual workers compensation audit. Currently working with auditor regarding ambulance administration payroll being at lower class rate.

Handled ISO rating. The field representative met with utility staff and fire chief to review records.

Assembled liquor license renewals from licensees.

Assembling information for Well #3 DNR appropriation permit. Will need to update Wellhead Protection Plan for this well. Will need to do a water supply plan that needs to be submitted by October 10, 2017.

Administered planning and zoning information and development agreements for the Hammel House project. Need to authorize putting project out for bids.

Listened to webinar for Department of Revenue changes to ambulance revenue recapture program.

UTILITY/BUILDING COMMITTEE

Administered between school and committee the storage and maintenance facility. Recommending approval of a new site location that will work for helipad and school's facility.

A preconstruction meeting was held on May 12 for 2017 Street Project. The contractor is hoping to start week of June 19th. Need to approve change order for project.

MNDOT will be doing a mill and overlay on TH139 from Hwy 52 to State Line in 2017. They will also be replacing some sidewalks along TH139 to make them ADA compliant. Signed agreements have been submitted to MNDOT. We have received funds for temporary right-of-way and right-of-way acquisitions.

Materials have been ordered for doors/windows at Visitor Center. A few doorways have been replaced. The rest of project will be completed soon.

Will be closing grant out with USDA soon for generator projects.

PERSONNEL COMMITTEE

Interviewed candidates for additional maintenance worker. Offered position to a potential employee.

Brian Johnson has resigned his position effective 6/16/17. Accepting job applications for full time maintenance worker. Position has been advertised.

City of Harmony
Cash Balance Report
April 2016 and April 2017

Fund Description	April-16	April-17
General Fund	672,301.35	670,418.71
Revolving Loan Fund	105,659.92	21,975.58
Commercial Rehab Fund	(1,143.84)	5,193.33
Library Fund	(32,049.60)	(21,358.04)
Fire Fund	56,815.98	50,000.53
Ambulance Fund	161,399.82	19,333.37
Park Fund	43,938.87	49,499.41
Arts Fund	2,620.58	724.39
GO Improvement 2010A-3rd St SW	28,139.54	32,958.29
GO Tax Abatement 2013A-Comm Cntr	269.07	2,463.52
GO Improvement 2013B-Heritage Grove	(6,836.15)	(5,842.60)
GO Improvement 2014A-1st Ave SW	97,341.34	106,638.35
Capital Projects Fund	537,718.03	646,553.24
TIF District #5-Antique Mall	114.88	125.29
TIF District #6-HECO	174.57	179.42
First Ave SW Project	-	-
Well No. 3 Project	-	-
2017 Street and Utility Project		(60,090.86)
Water Fund	26,806.89	190,184.48
Sewer Fund	3,954.28	19,403.51
Solid Waste Fund	(4,207.36)	2,451.12
Electric Fund	653,924.02	542,481.28
Storm Water Fund	1,845.34	6,268.38
Economic Development Fund	50,932.37	39,755.13
Total	2,399,719.90	2,319,315.83

CITY OF HARMONY

NOISE PERMIT APPLICATION

Date of Application 5-23-2017
Applicant Name Harmony Conservation Club
Address of Applicant 235 9th Ave SE
Phone Number of App 563-380-4009
Date(s) of Permit Necessary July 2nd + July 4th
July 2nd + July 5th

According to City Ordinance 92.18(F): "The using or operation or permitting the using or operation of any radio receiving set, musical instrument, phonograph, paging system, machine or other device for producing or reproduction of sound in a distinctly and loudly audible manner so as to disturb the peace, quiet and comfort of any person nearby, unless duly authorized by permit terms determined by City Council resolution as provided in this section. Operation without a permit of any device referred to above between the hours of 10:00 p.m. and 7:00 a.m. in a manner so as to be plainly audible at the property line of the structure or building in which it is located, or at a distance of 50 feet if the source is located outside a structure or building shall be prima facie evidence of violation of this section;"

In order for the City of Harmony to issue a permit, the council needs the following questions answered: (Attach additional sheet(s) as necessary)

1. Describe the volume, frequency, and type of sound to be generated.
Sound to be generated from Karaoke machines with speakers.
2. What day(s) of the week, time(s) of day(s) and duration of the sounds to be generated?
7-2-17 thru 7-5-17 12:00 Noon till 1:30 Am each Night
3. Describe the character and nature of land uses underlying and adjacent to the event generating the noise.
Land used is commercial property adjacent to city park and other commercial property.
4. Describe the proximity and compatibility of the event generating the noise to residential, religious or medical facilities, or the general public?
Event will be held under a tent, in a parking lot with a large brick building to the North, trees and city park to the South. Commercial property to the east & west. Church across street. But won't be open dur Church
5. Describe the sufficiency of the arrangements made to provide adequate security, garbage disposal, crowd control and parking control.
Event will be a small gated venue. Dumpster available for garbage disposal. Parking available on city streets and city lot. Conservation Club members will act as security and are directed to call Fillmore
6. Describe the imposition of conditions upon its issuance of any permit that are reasonably related to addressing concerns regarding any of these criteria.
Previous years of Harmony Chamber of Commerce beer tent or last years Conservation Club tent has resulted in no complaints.

Please return application to city office along with \$25.00 Noise Permit Fee payable to: City of Harmony



Minnesota Department of Public Safety
 Alcohol and Gambling Enforcement Division
 445 Minnesota Street, Suite 222, St. Paul, MN 55101
 651-201-7500 Fax 651-297-5259 TTY 651-282-6555

**APPLICATION AND PERMIT FOR A 1 DAY
 TO 4 DAY TEMPORARY ON-SALE LIQUOR LICENSE**

Name of organization <i>Harmony Conservation Club</i>		Date organized <i>07/11/1962</i>	Tax exempt number <i>E 256</i>	
Address <i>265 1st Ave SW</i>		City <i>Harmony</i>	State <i>Minnesota</i>	Zip Code <i>55939</i>
Name of person making application <i>Keith McIntosh</i>		Business phone <i>562-380-4009</i>	Home phone <i>507-886-2538</i>	
Date(s) of event <i>7-2-17 7-3-17 7-4-17 7-5-17</i>		Type of organization <input checked="" type="checkbox"/> Club <input type="checkbox"/> Charitable <input type="checkbox"/> Religious <input type="checkbox"/> Other non-profit		
Organization officer's name <i>Keith McIntosh</i>		City <i>Harmony</i>	State <i>Minnesota</i>	Zip <i>55939</i>
<input checked="" type="checkbox"/> Add New Officer				

Location where permit will be used. If an outdoor area, describe.

*RSC Building & Remodeling 55 main Ave S Harmony
 Out door parking lot large brick building on 1 side trees on*

If the applicant will contract for intoxicating liquor service give the name and address of the liquor license providing the service. *other*

Yes Schotts Distributing

If the applicant will carry liquor liability insurance please provide the carrier's name and amount of coverage.

APPROVAL

APPLICATION MUST BE APPROVED BY CITY OR COUNTY BEFORE SUBMITTING TO ALCOHOL AND GAMBLING ENFORCEMENT

<i>Harmony/Fillmore</i>	_____
City/County	Date Approved
<i>25.00</i>	_____
City Fee Amount	Permit Date
<i>5/26/17</i>	<i>cityoffice@harmony.mn.us</i>
Date Fee Paid	City/County E-mail Address

Signature City Clerk or County Official

Approved Director Alcohol and Gambling Enforcement

CLERKS NOTICE: Submit this form to Alcohol and Gambling Enforcement Division 30 days prior to event.

PLEASE PROVIDE A VALID E-MAIL ADDRESS FOR THE CITY/COUNTY AS ALL TEMPORARY PERMIT APPROVALS WILL BE SENT BACK VIA EMAIL. E-MAIL THE APPLICATION SIGNED BY CITY/COUNTY TO AGE.TEMPORARYAPPLICATION@STATE.MN.US

MINUTES
HARMONY PLANNING & ZONING COMMISSION
Special Meeting

June 6, 2017
7:00 P.M.

Council Room
Community Center

The regular meeting was called to order by Deb Swenson at 7:05 p.m.

Present: Erik Olson, Harold Berge, Lynn Mensink, Miles Petree, Deb Swenson
Also attending: Jerome Illg, Greg Schieber, Marie Lou Zombory

Hammel House Development

Administrator Illg presented a preliminary plat for the Walnut Farms First Addition. Administrator Illg explained the project and its location. The plat is for the development of 11 residential lots. It was mentioned that if Lot 7, Block 2 was subdivided, that utilities would be extended further to service that lot as part of the development agreement with the developers.

Motion by Olson, seconded by Mensink to recommend to the city council approval of the Preliminary Plat for Walnut Farms First Addition. Motion carried.

Administrator Illg explained that the 11 lots are currently zoned agriculture. The developer has requested that they be zoned R-1 for single family houses, similar to the adjacent area.

Motion by Petree, seconded by Mensink to rezone the 11 lots in Walnut Farms First Addition from Agriculture to R-1. Motion carried.

Renewable Energy Ordinance

A sample solar ordinance was reviewed. Attorney Schieber explained that he was looking for some direction and feedback to update the sample solar ordinance.

Discussion occurred on a number of topics with consensus. They are as follows.

1. Solar panels should not be allowed as a principal use in R-1 districts, but are allowable as an accessory use.
2. Ground mounted solar panels in a R-1 district are not allowable in a front or side yards. They are allowable in rear yard behind principal structure. They are not to be over 15 feet in height and cover no more than 50% of the surface area of the back yard. Ground mounted solar panels must not be visible from the nearest edge of any public right-of-way other than an alley. They must comply with zoning setbacks for an accessory building.
3. Roof or side mounted solar panel are allowable as long as they are not higher than 12 inches above roof running at the same slope as roof in R-1. They are allowed to cover entire roof area or 75% of side of building.
4. Flat roof (roof pitch of less than 3/12) mounted solar panels are allowable on buildings as long as they are not higher than 3 ft and have a 3 ft clearance around roof edges.
5. A city permit shall be required for all solar installations. A CUP shall be required only when requesting to install solar as a principal use in Commercial, Industrial, or Agricultural zones.

6. The administrative variance section is acceptable, which allows for flexibility should conditions merit.
7. For Agriculture and Industrial zoned areas, ground mounted solar panels must be an accessory use and shall not occupy more than 50% of the surface area of the lot and shall adhere to existing setbacks. Roof installations are permissible for entire roof area.

Attorney Schieber will incorporate the changes that were discussed. A new draft will be sent out for a future meeting to review to consider recommendation to the council for approval.

There being no further business the meeting was adjourned by Olson, seconded by Mensink at 8:30 p.m.

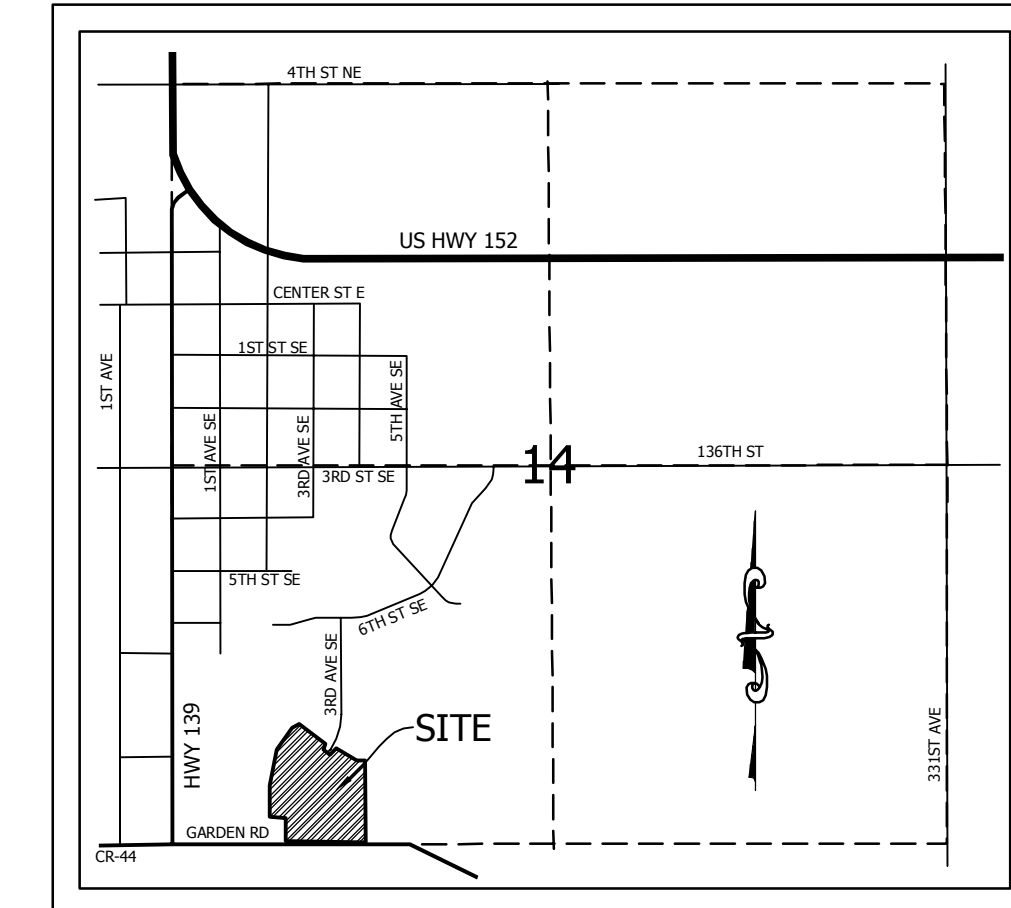
Deb Swenson, Zoning Board Member

A T T E S T

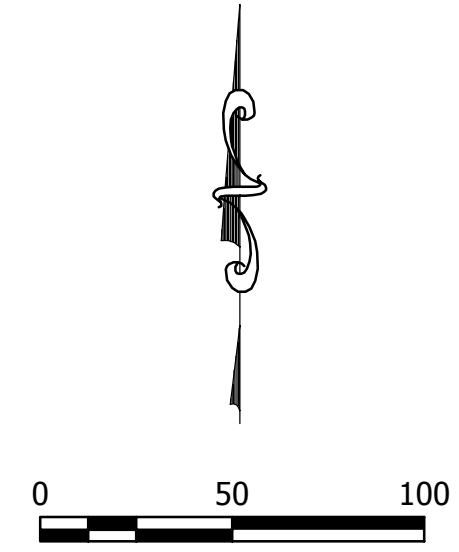
Jerome Illg, Zoning Administrator

PRELIMINARY PLAT OF WALNUT FARMS FIRST ADDITION

VICINITY MAP
HARMONY, MN
NOT TO SCALE

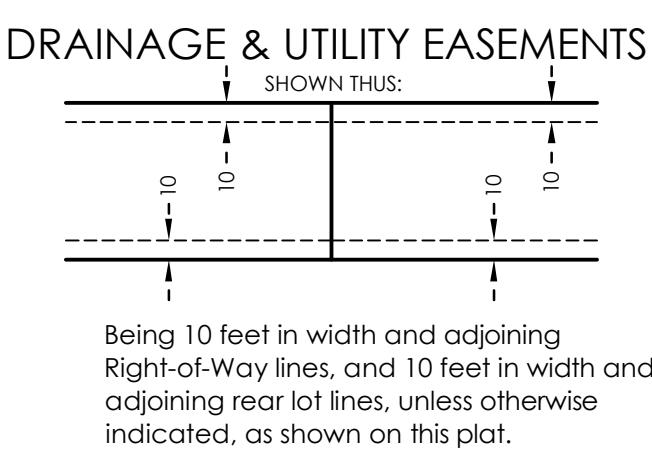


THE CONTRACTOR SHALL VERIFY AND BE RESPONSIBLE FOR ALL DIMENSIONS. DO NOT SCALE THE DRAWING. THE SURVEYOR SHALL BE RESPONSIBLE FOR THE ACCURACY OF THE SURVEY. THE CONTRACTOR SHALL VERIFY AND BE RESPONSIBLE FOR ALL DIMENSIONS. DO NOT SCALE THE DRAWING. THE SURVEYOR SHALL BE RESPONSIBLE FOR THE ACCURACY OF THE SURVEY.



- DENOTES FOUND 1/2 INCH BY 14 INCH IRON PIPE UNLESS OTHERWISE DESCRIBED
- DENOTES 1/2 INCH BY 14 INCH IRON PIPE SET WITH PLASTIC PLUG INSCRIBED WITH "STANTEC 23682"
- DENOTES FILLMORE COUNTY CAST IRON MONUMENT

BEARING ORIENTATION
Orientation of this bearing system is based on the south line of the Southwest Quarter of Section 14, Township 101 North, Range 10 West and has an assumed bearing of North 88 degrees 39 minutes 39 seconds East.



Land Surveyor: Linda H. Brown
MN License No. 23682
Stantec Consulting
3717 23rd Street South
St. Cloud, MN 56301
320-229-5535

Owner/Developer: Hammel House & Company, LLC.
750 Main Street, Suite 214
Mendota Heights, MN 55118

LEGAL DESCRIPTION

Outlot B, LUTES SCRABECK FIRST ADDITION, according to the recorded plat thereof, Fillmore County, Minnesota.

TOTAL ACREAGE: 9.17+/- Acres
EXISTING ZONING: Agriculture
PROPOSED ZONING: Residential-1
BUILDING SETBACKS:
Residential-1
Front (Right-of-Way).....25 feet
Side Interior.....6 feet
Rear.....30 feet
BENCHMARK: MnDot Geodetic Marker, NGS
Name: HARMONY RM 4
Elevation=1338.934 (NAVD88)
Topographic data found on the this plat was collected by Stantec Consulting on April 20, 2017.
COORDINATE SYSTEM: Fillmore County (2012 Adjustment)
MINIMUM LOT SIZE: 22,012 SF
MAXIMUM LOT SIZE: 100,186 SF

LEGEND

	GUY WIRE		POWER POLE
	POWER POLE		TRAFFIC SIGN
	SANITARY MANHOLE		DECIDUOUS TREE
	CATCH BASIN		COMMUNICATION PEDESTAL
	HYDRANT		ELECTRIC PEDESTAL
	WATER MAIN VALVE		
	BOUNDARY CENTERLINE		
	EXISTING EASEMENT LINE		
	BUILDING SETBACK LINE		
	EXISTING LOT LINE		
	EXISTING RIGHT-OF-WAY SECTION LINE		
	G-B BURIED GAS QUALITY LEVEL B		
	C-B BURIED COMMUNICATION QUALITY LEVEL B		
	FO-B FIBER OPTIC QUALITY LEVEL B		
	OHP OVERHEAD POWER		
	EXISTING STORM SEWER LINE		
	EXISTING SANITARY SEWER LINE		
	EXISTING WATER MAIN LINE		
	BITUMINOUS SURFACE		
	GRAVEL SURFACE		

Plot Date: 05/23/2017 - 11:00am
Drawing Name: 193803798_CADD.dwg
Drawing Size: 193803798.dwg

Stantec

St. Cloud Office
3717 23rd Street South
Saint Cloud, MN 56301
Phone: 320-251-4653
Fax: 320-251-4652
Website: www.stantec.com

DATE	REVISION	BY	DATE

DATE: 5/23/2017

PROJECT NUMBER: 193803798

SHEET NUMBER: V401

HAMEL HOUSE & COMPANY, LLC
PRELIMINARY PLAT OF WALNUT FARMS FIRST ADDITION



Owner: City of Harmony, MN

Date: May 25, 2017

Contractor: A-1 Excavating, Inc., 408 26th Avenue, Bloomer, WI 54724

CHANGE ORDER NO. 1
 2017 STREET AND UTILITY IMPROVEMENTS
 HARMONY, MN
 STANTEC FILE NO. 193803796

Description of Work

Changed flow direction for the sanitary sewer and added watermain along Forth Street SW.

Change in items

Item No.	Item Description	Unit	Original Quantity	Revised Quantity	Unit Price
9	8" PVC SANITARY SEWER, SDR 35	LIN FT	985	1,095	\$34.00
10	TELEVISION SANITARY SEWER	LIN FT	985	1,095	\$1.00
11	IMPROVED PIPE FOUNDATION	LIN FT	985	1,095	\$0.30
15	CONNECT TO EXISTING WATER MAIN	EACH	10	12	\$1,050.00
16	6" GATE VALVE AND BOX	EACH	11	12	\$1,355.00
20	6" C900 PVC WATER MAIN, DR 18	LIN FT	1420	1,795	\$34.00
23	DUCTILE IRON FITTINGS	LB	750	862	\$7.30
32	1" CURB STOP AND BOX	EACH	33	34	\$255.00
33	1.5" CURB STOP AND BOX	EACH	5	4	\$390.00
34	1" CORPORATION STOP	EACH	33	34	\$12.00
35	1" SERVICE SADDLE	EACH	33	34	\$130.00
36	1.5" CORPORATION STOP	EACH	5	4	\$195.00
37	1.5" SERVICE SADDLE	EACH	5	4	\$165.00
38	1" TYPE "K" COPPER WATER SERVICE	LIN FT	900	891	\$36.00
39	1.5" TYPE "K" COPPER WATER SERVICE	LIN FT	350	175	\$40.00
42	RECLAIM BITUMINOUS PAVEMENT	SY	7,295	7445	\$0.50
48	SAWING BITUMINOUS PAVEMENT	LIN FT	400	500	\$2.40
52	GEOTEXTILE FABRIC, TYPE V	SY	7,820	7970	\$1.70
53	AGGREGATE BASE, CLASS 5 (CV)	CY	3,275	3338	\$26.80
55	TYPE SP 12.5 NON WEARING COURSE MIXTURE (3,B) (2" THICK)	SY	6,530	6680	\$10.00
56	TYPE SP 12.5 WEARING COURSE MIXTURE (3,B) (1.5" THICK)	SY	6,530	6830	\$7.30
57	BITUMINOUS MATERIAL FOR TACK COAT (P)	GAL	325	355	\$2.05

Costs

Decrease

Item No.	Item Description	Unit	Unit Price	Quantity	Amount
33	1.5" CURB STOP AND BOX	EACH	\$390.00	-1	(\$390.00)
36	1.5" CORPORATION STOP	EACH	\$195.00	-1	(\$195.00)
37	1.5" SERVICE SADDLE	EACH	\$165.00	-1	(\$165.00)
38	1" TYPE "K" COPPER WATER SERVICE	LIN FT	\$36.00	-9	(\$324.00)
39	1.5" TYPE "K" COPPER WATER SERVICE	LIN FT	\$40.00	-175	(\$7,000.00)
					(\$8,074.00)

Increase

Item No.	Item Description	Unit	Unit Price	Quantity	Amount
9	8" PVC SANITARY SEWER, SDR 35	EACH	\$34.00	110	\$3,740.00
10	TELEVISION SANITARY SEWER	LIN FT	\$1.00	110	\$110.00

11	IMPROVED PIPE FOUNDATION	LIN FT	\$0.30	110	\$33.00
15	CONNECT TO EXISTING WATER MAIN	EACH	\$1,050.00	2	\$2,100.00
16	6" GATE VALVE AND BOX	EACH	\$1,355.00	1	\$1,355.00
20	6" C900 PVC WATER MAIN, DR 18	LIN FT	\$34.00	375	\$12,750.00
23	DUCTILE IRON FITTINGS	EACH	\$7.30	112	\$817.60
32	1" CURB STOP AND BOX	EACH	\$255.00	1	\$255.00
34	1" CORPORATION STOP	EACH	\$12.00	1	\$12.00
35	1" SERVICE SADDLE	EACH	\$130.00	1	\$130.00
42	RECLAIM BITUMINOUS PAVEMENT	SY	\$0.50	150	\$75.00
48	SAWING BITUMINOUS PAVEMENT	LIN FT	\$2.40	100	\$240.00
52	GEOTEXTILE FABRIC, TYPE V	SY	\$1.70	150	\$255.00
53	AGGREGATE BASE, CLASS 5 (CV)	CY	\$26.80	63	\$1,688.40
55	TYPE SP 12.5 NON WEARING COURSE MIXTURE (3,B) (2" THICK)	SY	\$10.00	150	\$1,500.00
56	TYPE SP 12.5 WEARING COURSE MIXTURE (3,B) (1.5" THICK)	SY	\$7.30	300	\$2,190.00
57	BITUMINOUS MATERIAL FOR TACK COAT (P)	GAL	\$2.05	30	\$61.50
					\$27,312.50

Item No.	Item	Unit	Unit Price	Contract Quantity	Total Amount
	CHANGE ORDER NO. 1				
9	8" PVC SANITARY SEWER, SDR 35	EACH	\$34.00	110	\$3,740.00
10	TELEVISION SANITARY SEWER	LIN FT	\$1.00	110	\$110.00
11	IMPROVED PIPE FOUNDATION	LIN FT	\$0.30	110	\$33.00
15	CONNECT TO EXISTING WATER MAIN	EACH	\$1,050.00	2	\$2,100.00
16	6" GATE VALVE AND BOX	EACH	\$1,355.00	1	\$1,355.00
20	6" C900 PVC WATER MAIN, DR 18	LIN FT	\$34.00	375	\$12,750.00
23	DUCTILE IRON FITTINGS	EACH	\$7.30	112	\$817.60
32	1" CURB STOP AND BOX	EACH	\$255.00	1	\$255.00
33	1.5" CURB STOP AND BOX	EACH	\$390.00	-1	(\$390.00)
34	1" CORPORATION STOP	EACH	\$12.00	1	\$12.00
35	1" SERVICE SADDLE	EACH	\$130.00	1	\$130.00
36	1.5" CORPORATION STOP	EACH	\$195.00	-1	(\$195.00)
37	1.5" SERVICE SADDLE	EACH	\$165.00	-1	(\$165.00)
38	1" TYPE "K" COPPER WATER SERVICE	LIN FT	\$36.00	-9	(\$324.00)
39	1.5" TYPE "K" COPPER WATER SERVICE	LIN FT	\$40.00	-175	(\$7,000.00)
42	RECLAIM BITUMINOUS PAVEMENT	SY	\$0.50	150	\$75.00
48	SAWING BITUMINOUS PAVEMENT	LIN FT	\$2.40	100	\$240.00
52	GEOTEXTILE FABRIC, TYPE V	SY	\$1.70	150	\$255.00
53	AGGREGATE BASE, CLASS 5 (CV)	CY	\$26.80	63	\$1,688.40
55	TYPE SP 12.5 NON WEARING COURSE MIXTURE (3,B) (2" THICK)	SY	\$10.00	150	\$1,500.00
56	TYPE SP 12.5 WEARING COURSE MIXTURE (3,B) (1.5" THICK)	SY	\$7.30	300	\$2,190.00
57	BITUMINOUS MATERIAL FOR TACK COAT (P)	GAL	\$2.05	30	\$61.50
TOTAL CHANGE ORDER NO. 1:					\$19,238.50

Original Contract Amount	\$755,726.75
Previous Change Orders	\$0.00
This Change Order	<u>\$19,238.50</u>
Revised Contract Amount (including this change order)	\$774,965.25

Recommended for Approval by:
STANTEC



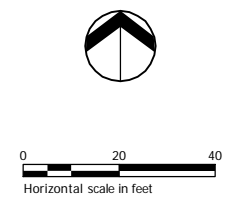
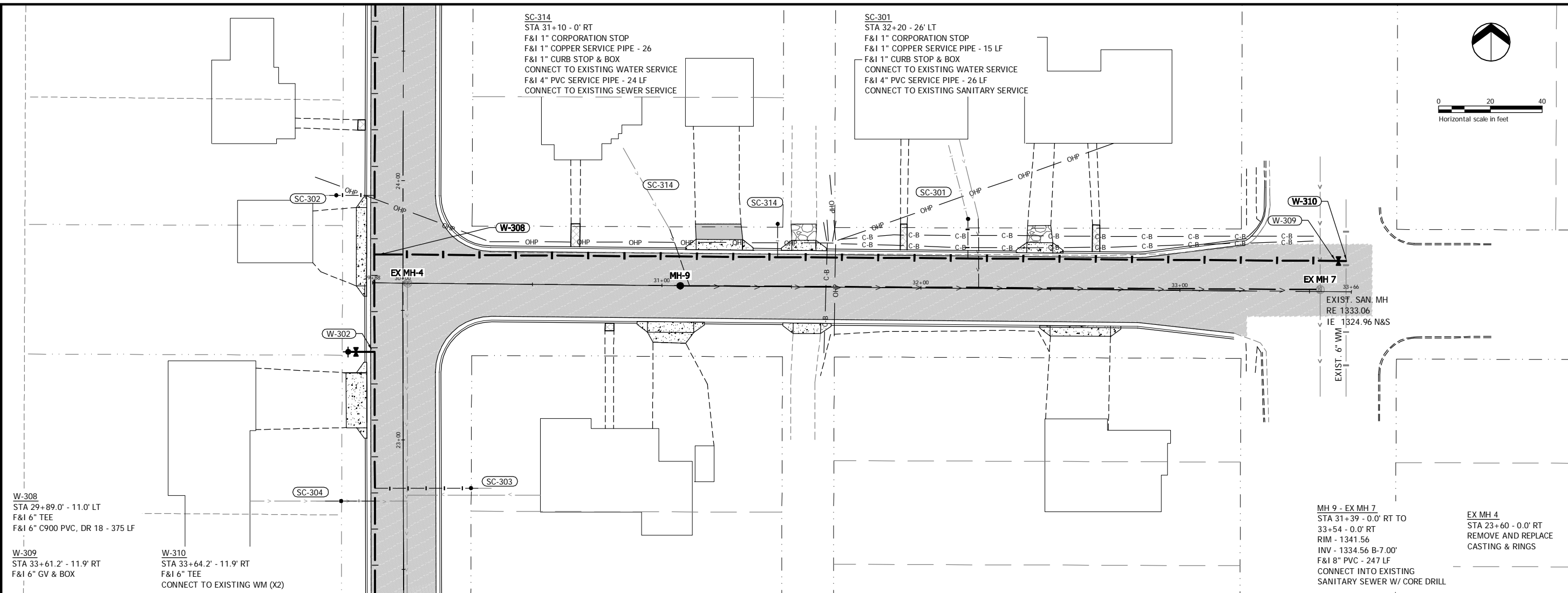
Date: 5/25/2017

Approved by Contractor:
A-1 EXCAVATING INC.

Approved by Owner:
City of Harmony

cc: City of Harmony
A-1 Excavating

THE CONTRACTOR SHALL VERIFY AND BE RESPONSIBLE FOR ALL DIMENSIONS. DO NOT SCALE THE DRAWING. ANY ERRORS OR OMISSIONS SHALL BE REPORTED TO STANTEC WHOSE DRAFTER, ENGINEER OR USER FOR ANY PURPOSE OTHER THAN THAT AUTHORIZED BY STANTEC IS FORBIDDEN.



W-308
STA 29+89.0' - 11.0' LT
F&I 6" TEE
F&I 6" C900 PVC, DR 18 - 375 LF

W-309
STA 33+61.2' - 11.9' RT
F&I 6" GV & BOX

W-310
STA 33+64.2' - 11.9' RT
F&I 6" TEE
CONNECT TO EXISTING WM (X2)

SC-302
OHP

SC-303
OHP

SC-304
OHP

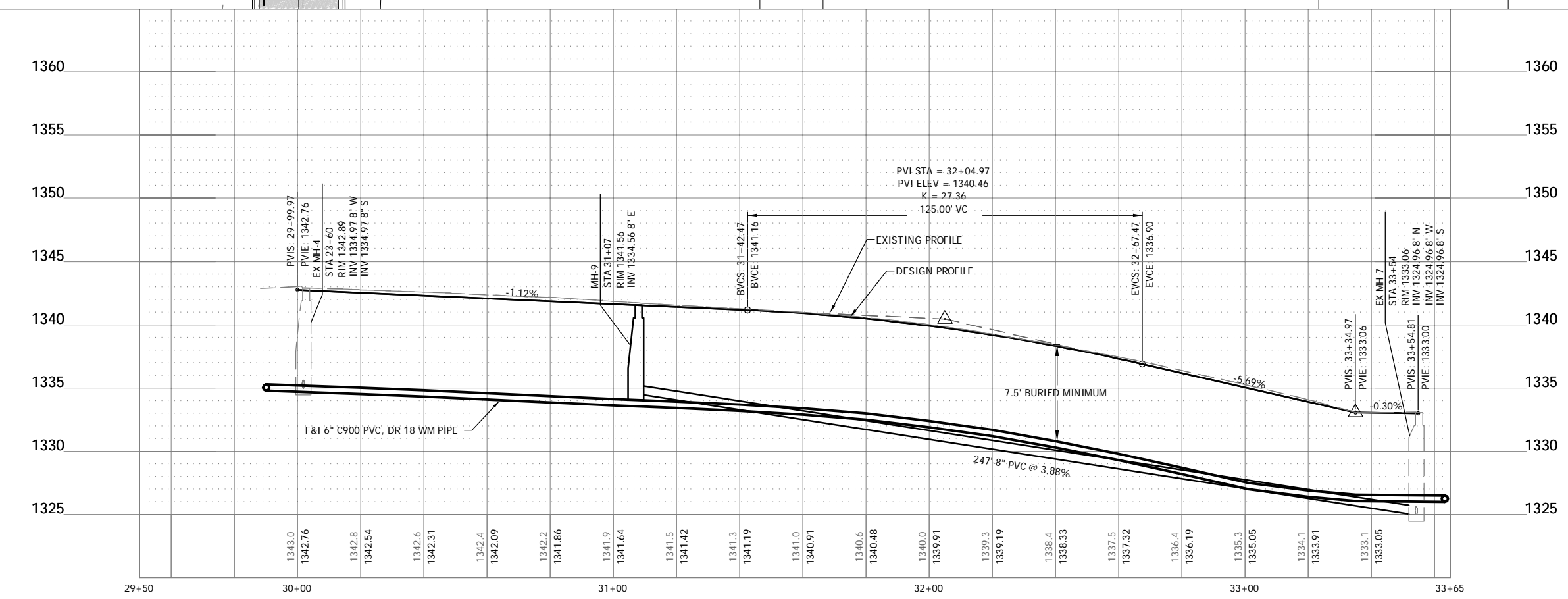
SC-314
STA 31+10 - 0' RT
F&I 1" CORPORATION STOP
F&I 1" COPPER SERVICE PIPE - 26
F&I 1" CURB STOP & BOX
CONNECT TO EXISTING WATER SERVICE
F&I 4" PVC SERVICE PIPE - 24 LF
CONNECT TO EXISTING SEWER SERVICE

SC-301
STA 32+20 - 26' LT
F&I 1" CORPORATION STOP
F&I 1" COPPER SERVICE PIPE - 15 LF
F&I 1" CURB STOP & BOX
CONNECT TO EXISTING WATER SERVICE
F&I 4" PVC SERVICE PIPE - 26 LF
CONNECT TO EXISTING SANITARY SERVICE

EX MH-4
STA 23+60 - 0.0' RT
REMOVE AND REPLACE
CASTING & RINGS

MH-9 - EX MH-7
STA 31+39 - 0.0' RT TO
33+54 - 0.0' RT
RIM - 1341.56
INV - 1334.56 B-7.00'
F&I 8" PVC - 247 LF
CONNECT INTO EXISTING
SANITARY SEWER W/ CORE DRILL

EX MH-7
EXIST. SAN. MH
RE 1333.06
IE 1324.96 N&S
EXIST. 6" WM



Plot Date: 05/25/2017 - 8:29am
Drawing name: V:\1938\active\193803796\CAD\DWG\193803796-400.dwg
User: 193803796\BDD, 193803796\SS, 193803796\MO, 193803796\K, 193803796\MOVED, 193803796\BDD

Stantec
6188 Rome Ct. NW
Rochester, MN 55901
www.stantec.com

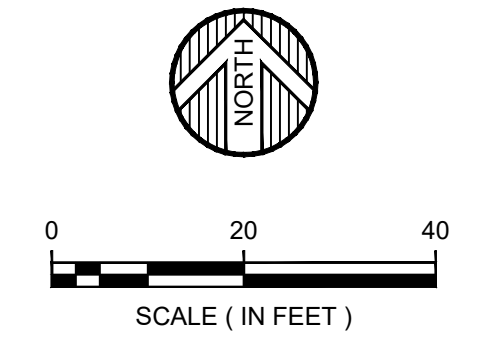
HEREBY CERTIFY THAT THIS PLAN, SPECIFICATION OR REPORT WAS PREPARED BY ME OR UNDER MY DIRECT SUPERVISION AND THAT I AM A DULY LICENSED PROFESSIONAL ENGINEER UNDER THE LAWS OF THE STATE OF MINNESOTA.
PRINT NAME: BRETT A. GRABAU
SIGNATURE: *B.A. Gr*
DATE: 02/13/17 LIC. NO. 49762

CITY OF HARMONY, MINNESOTA
2017 STREET AND UTILITY IMPROVEMENTS
FORTH STREET SW
STREET UTILITY PLAN - PROFILE

NO	REVISION	DATE
1	WM & SSW	5/8/2017

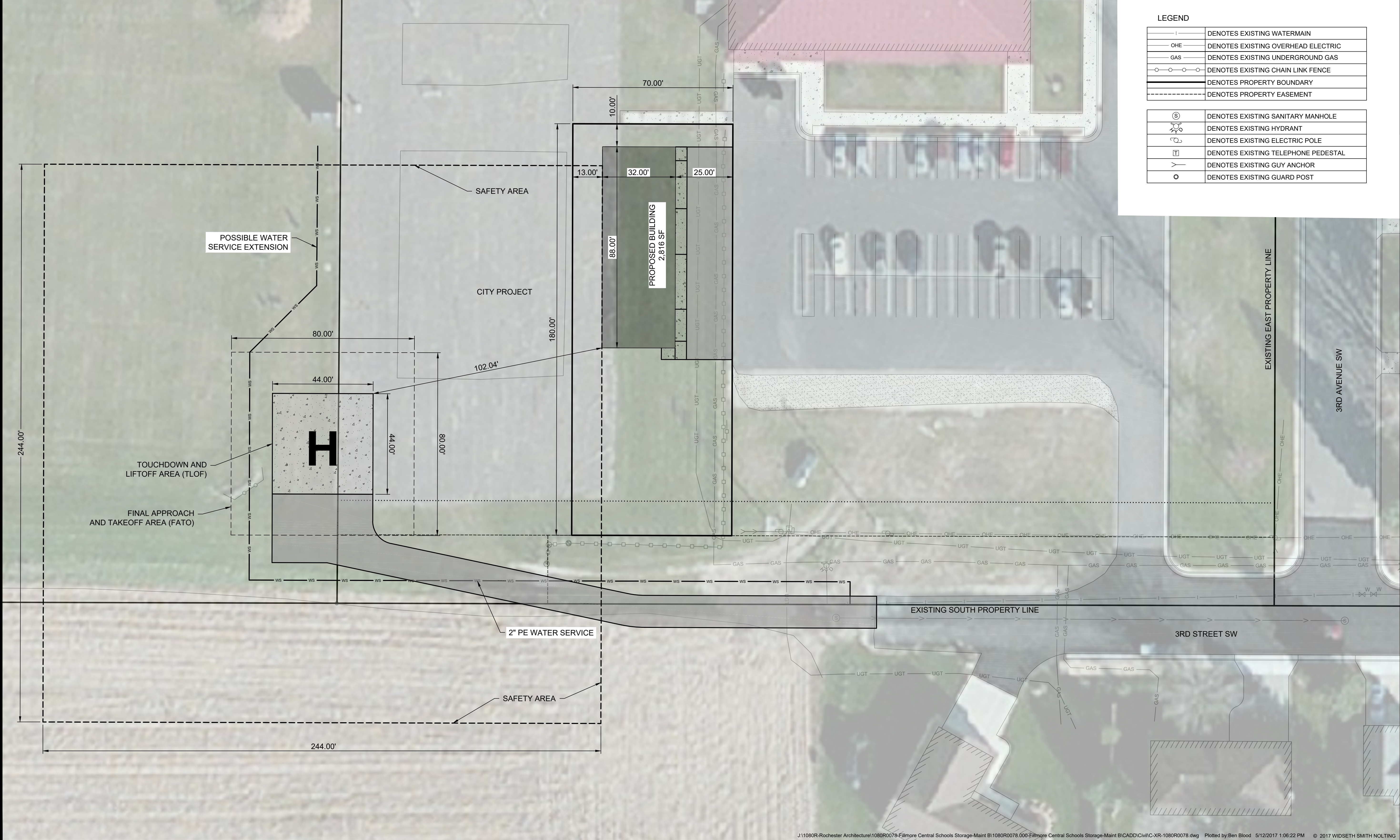
SURVEY	RS
DRAWN	MG/KH
DESIGNED	BG
CHECKED	BG
APPROVED	BG
PROJ. NO.	193803796
SHEET NUMBER	16

FILLMORE CENTRAL SCHOOLS STORAGE AND MAINTENANCE BUILDING



LEGEND

	DENOTES EXISTING WATERMAIN
	DENOTES EXISTING OVERHEAD ELECTRIC
	DENOTES EXISTING UNDERGROUND GAS
	DENOTES EXISTING CHAIN LINK FENCE
	DENOTES PROPERTY BOUNDARY
	DENOTES PROPERTY EASEMENT
	DENOTES EXISTING SANITARY MANHOLE
	DENOTES EXISTING HYDRANT
	DENOTES EXISTING ELECTRIC POLE
	DENOTES EXISTING TELEPHONE PEDestal
	DENOTES EXISTING GUY ANCHOR
	DENOTES EXISTING GUARD POST



WIDSETH SMITH NOLTING
Engineering | Architecture | Surveying | Environmental

DATE: FEBRUARY, 2017	REVISIONS DESCRIPTION	DATE	REV#	BY
SCALE: AS SHOWN				
DRAWN BY: JTW				
CHECKED BY: CWS				
JOB NUMBER: 1080R0078.000				

FILLMORE CENTRAL STORAGE AND MAINTENANCE BLDG

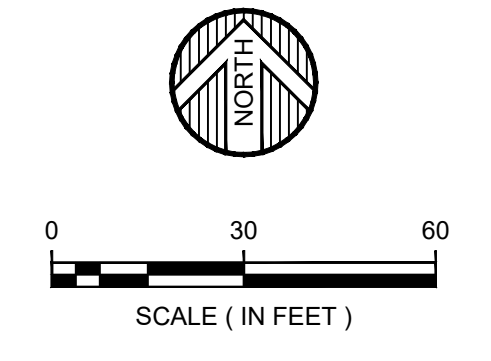
FILLMORE CENTRAL SCHOOLS

HARMONY, MN

CONCEPT SITE PLAN

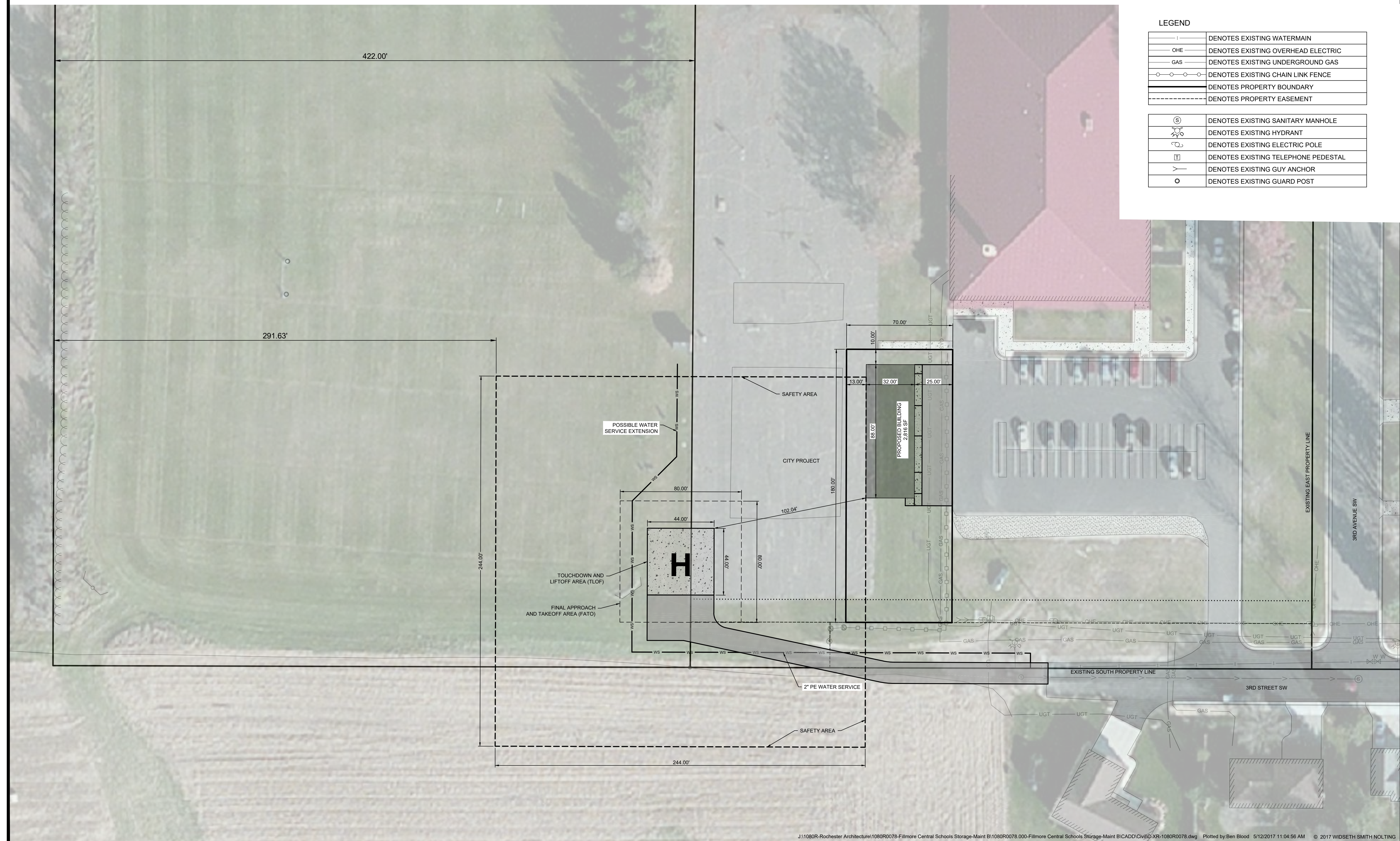
SHEET NO.

FILLMORE CENTRAL SCHOOLS STORAGE AND MAINTENANCE BUILDING



LEGEND

	DENOTES EXISTING WATERMAIN
	DENOTES EXISTING OVERHEAD ELECTRIC
	DENOTES EXISTING UNDERGROUND GAS
	DENOTES EXISTING CHAIN LINK FENCE
	DENOTES PROPERTY BOUNDARY
	DENOTES PROPERTY EASEMENT
	DENOTES EXISTING SANITARY MANHOLE
	DENOTES EXISTING HYDRANT
	DENOTES EXISTING ELECTRIC POLE
	DENOTES EXISTING TELEPHONE PEDESTAL
	DENOTES EXISTING GUY ANCHOR
	DENOTES EXISTING GUARD POST



WIDSETH SMITH NOLTING
Engineering | Architecture | Surveying | Environmental

DATE: FEBRUARY, 2017
SCALE: AS SHOWN
DRAWN BY: JTW
CHECKED BY: CNS
JOB NUMBER: 1080R0078.000

FILLMORE CENTRAL STORAGE AND MAINTENANCE BLDG
FILLMORE CENTRAL SCHOOLS
HARMONY, MN
CONCEPT SITE PLAN

REVISIONS DESCRIPTION	DATE	REV#

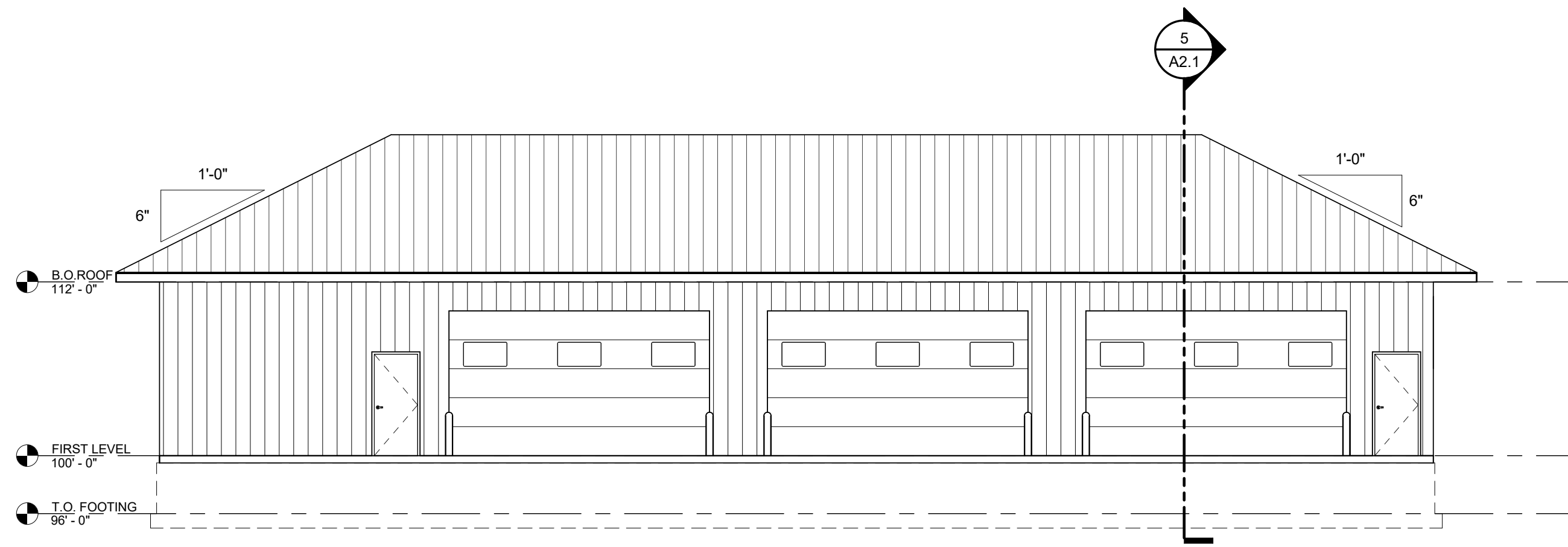
BY: _____
DATE: _____
DATE: _____
DATE: _____

I HEREBY CERTIFY THAT THIS PLAN, SPECIFICATION OR REPORT IS MY ORIGINAL WORK AND THAT I AM A DULY LICENSED PROFESSIONAL ENGINEER UNDER THE LAWS OF THE STATE OF MINNESOTA.
#_____
#_____
#_____
#_____

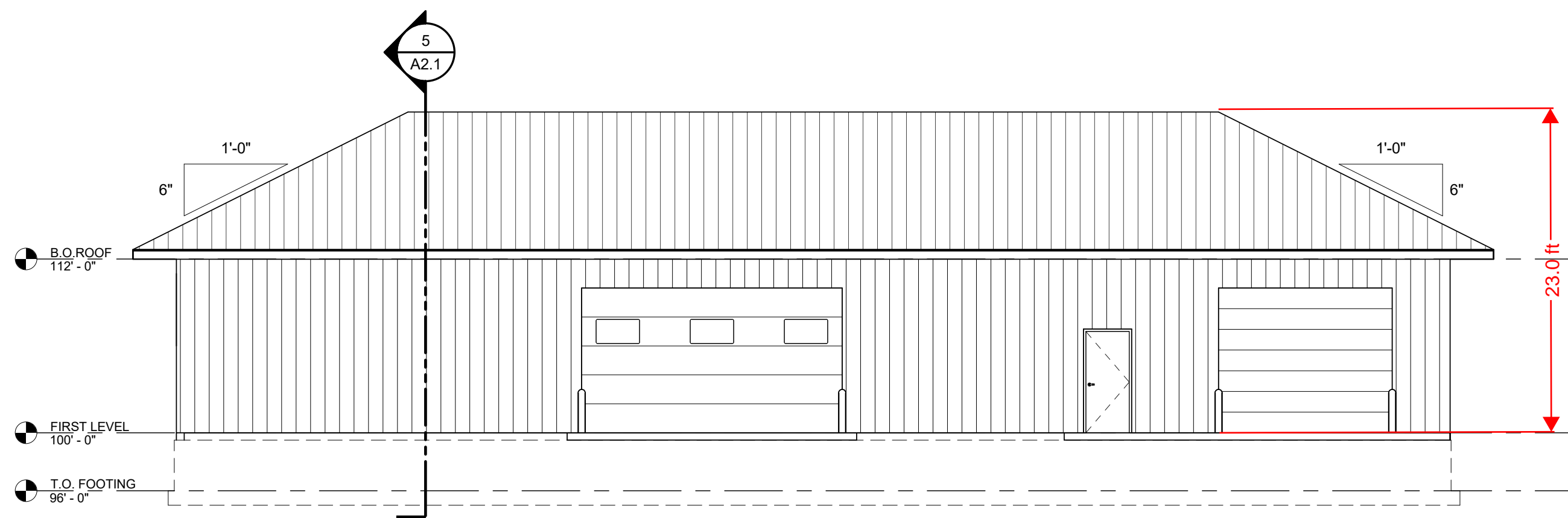
LIC. NO. #####
DATE: #####
#_____
#_____

SHEET NO. _____

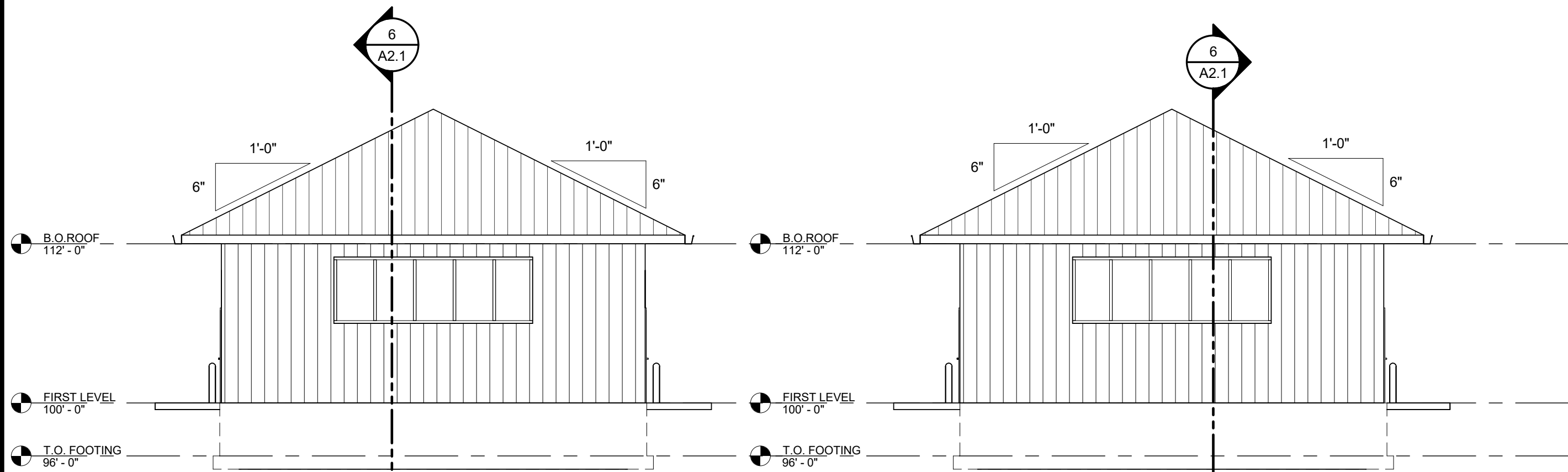
J:\1080R-Rochester Architecture\1080R0078-Fillmore Central Schools Storage-Maint B\1080R0078.000-Fillmore Central Schools Storage-Maint B\CADD\Civil\G-XR-1080R0078.dwg Plotted by: Ben Blood 5/12/2017 11:04:56 AM © 2017 WIDSETH SMITH NOLTING



1 SOUTH ELEVATION
1/8" = 1'-0"

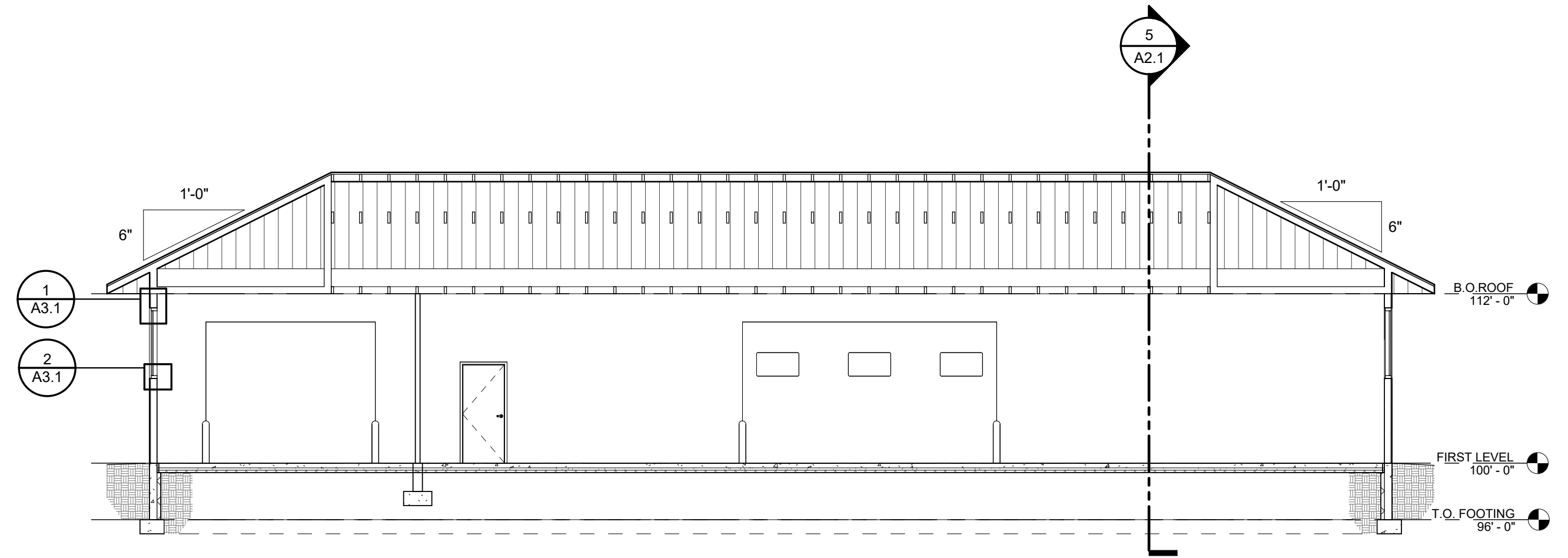


2 NORTH ELEVATION
1/8" = 1'-0"

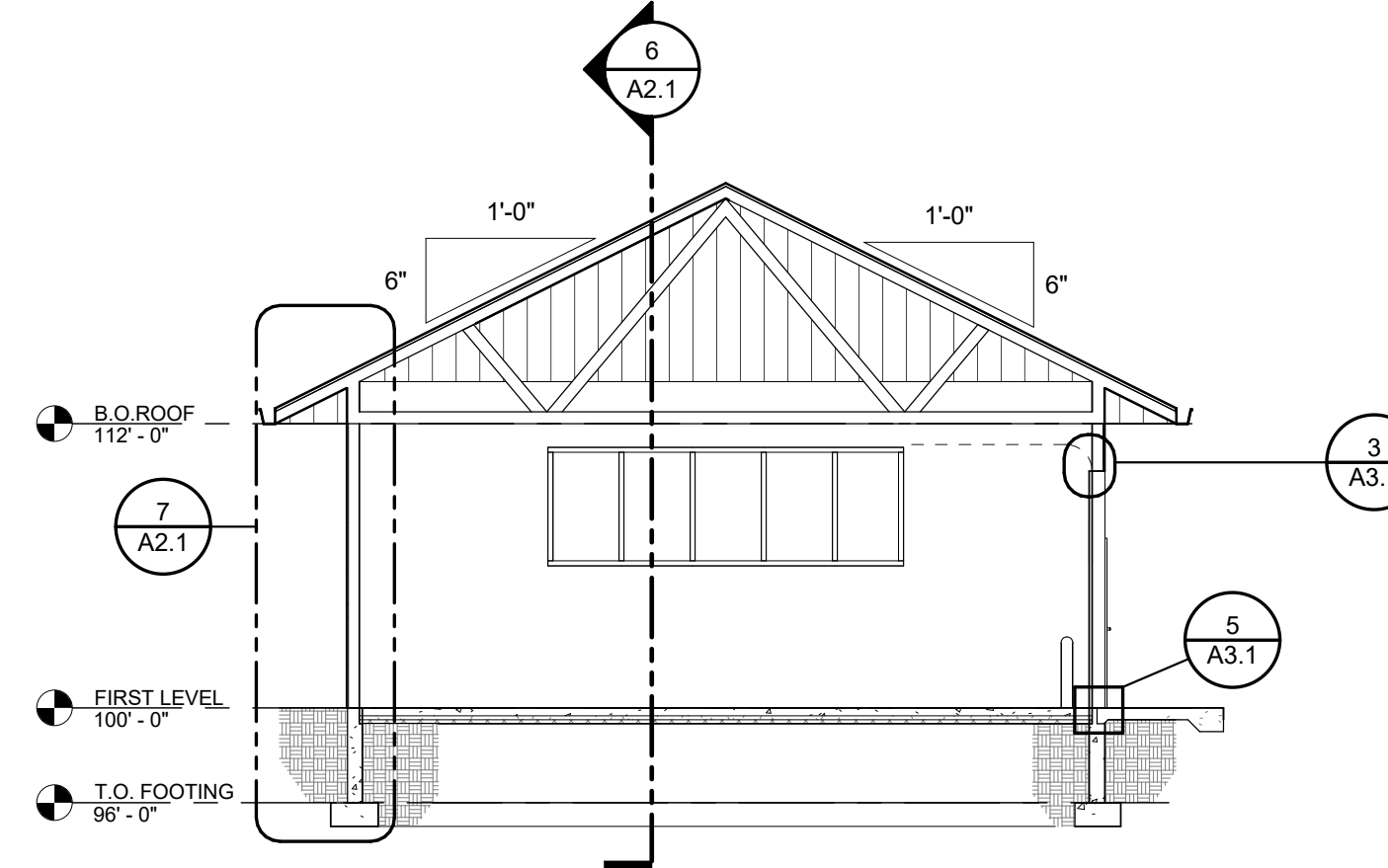


3 WEST ELEVATION
1/8" = 1'-0"

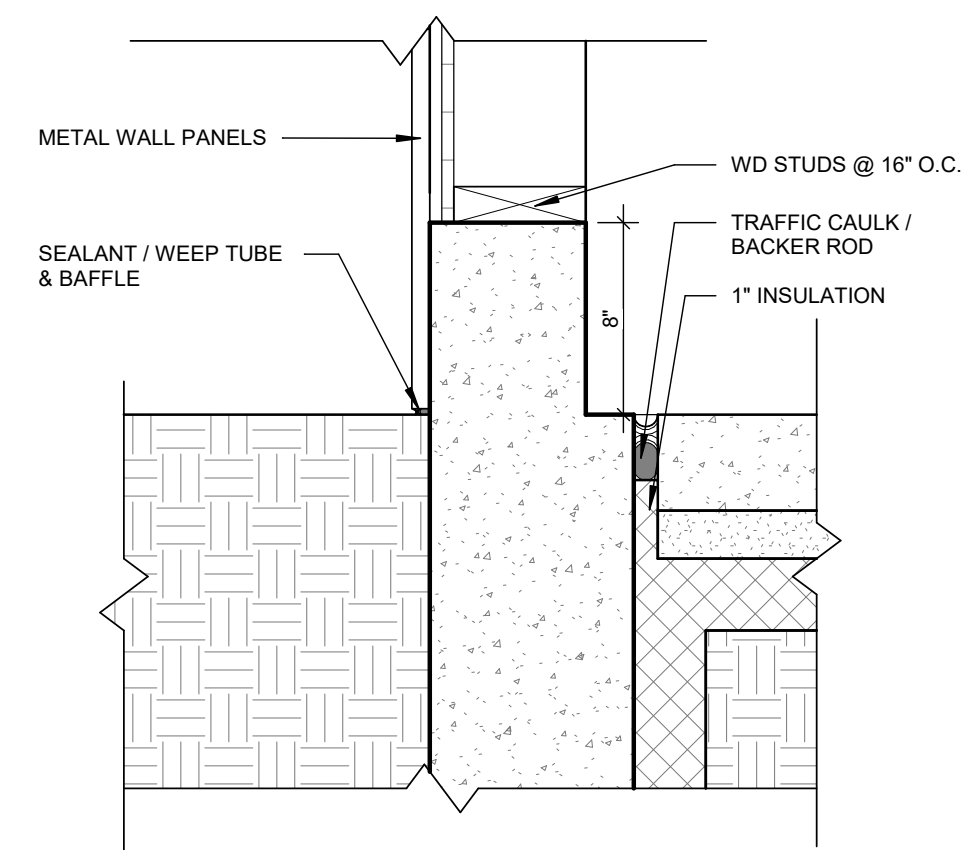
4 EAST ELEVATION
1/8" = 1'-0"



6 EAST-WEST BUILDING SECTION
1/8" = 1'-0"



5 NORTH - SOUTH BUILDING SECTION
1/8" = 1'-0"



8 TYPICAL WALL BASE DETAIL
1 1/2" = 1'-0"

- ROOF ASSEMBLY:**
- METAL ROOF PANEL
 - SLIP SHEET
 - ROOF UNDERLAYMENT
 - 5/8" PLYWOOD
 - AIR BAFFLES
 - R-49 MIN. BLOWN INSULATION
 - WOOD TRUSSES 24" O.C.
 - VAPOR RETARDER
 - METAL LINER PANEL

- PREFINISHED METAL FASCIA WITH FLASHING (MATCH ROOF)**
- PREFINISHED VENTED SOFFIT**
- DRAFT STOP CONTINUOUS**
12' - 0" A.F.F. MAX

- WALL ASSEMBLY:**
- METAL PANEL
 - AIR BARRIER
 - 1/2" EXT. SHEATHING
 - 6" WD STUDS AT 16" O.C.
 - R-13 BATT INSULATION W/ RETAINER AS REQ'D. (alt.)
 - VAPOR RETARDER(alt.)
 - METAL LINER PANEL ON 1/2" OSB(alt.)

- FLOOR ASSEMBLY:**
- 4" CONCRETE SLAB
 - 2" MIN. WASHED SAND TUBING BED
 - 2" RIGID INSULATION
 - COMPACTED GRANULAR FILL

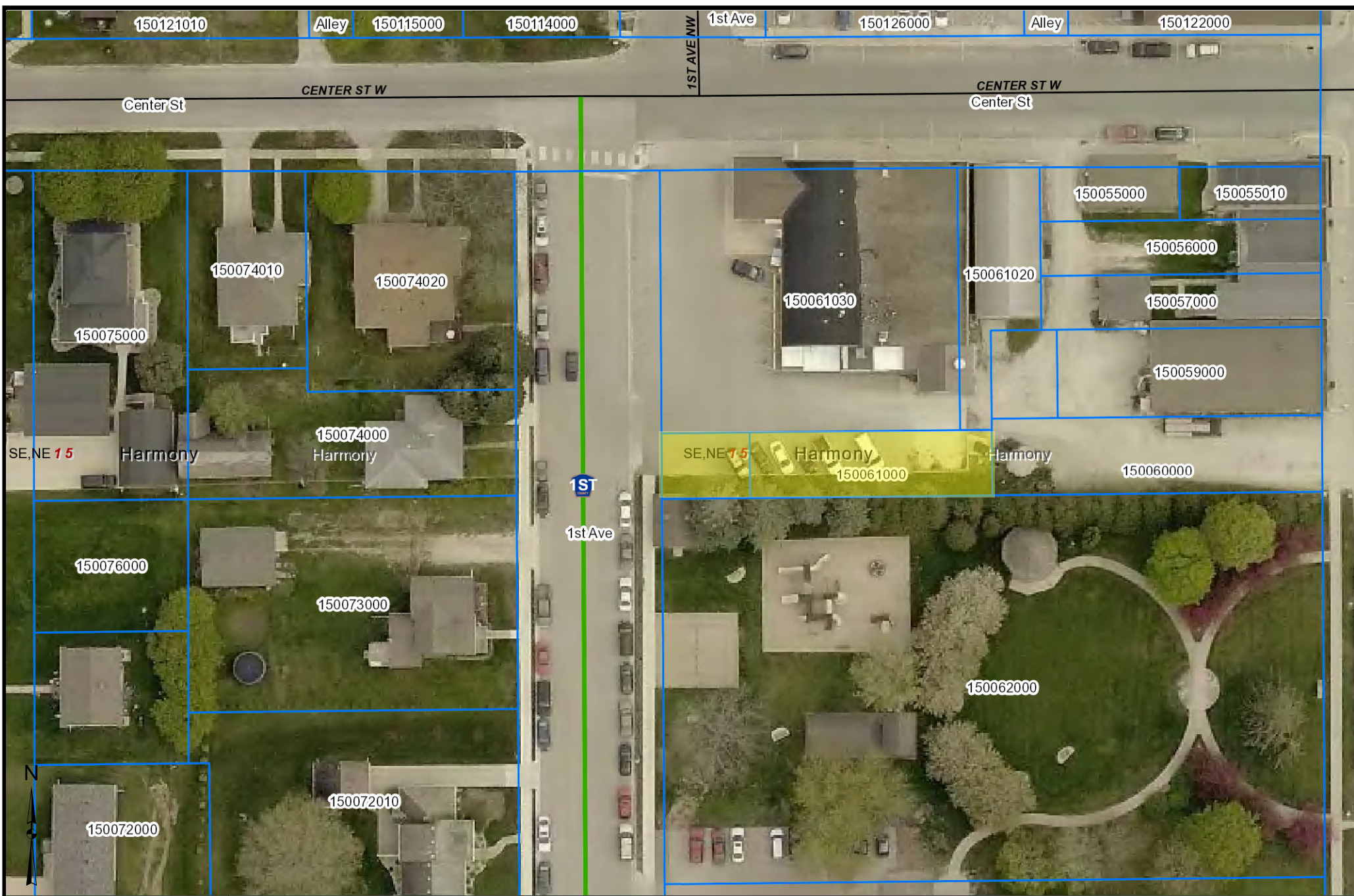
- FOUNDATION ASSEMBLY:**
(SEE STRUC.)
- 8" CIP WALL
 - R-15 3" RIGID INSULATION

7 WALL SECTION
1/2" = 1'-0"



REV #	DATE	REVISIONS DESCRIPTION

DATE: 03/21/2017	SCALE: AS NOTED	DRAWN BY: YL	CHECKED BY: DH	JOB NUMBER: 106R0076.000
------------------	-----------------	--------------	----------------	--------------------------



These data are provided on an "AS-IS" basis, without warranty of any type, expressed or implied, including but not limited to any warranty as to their performance, merchantability, or fitness for any particular purpose.

Lot Sale

Date: 6/9/2017

This map is not a substitute for accurate field surveys or for locating actual property lines and any adjacent features.

