

AGENDA
HARMONY CITY COUNCIL
Regular Meeting

June 12, 2018
7:00 P.M.

Council Room
Community Center

1. Call To Order
2. Roll Call
3. Public Forum
4. Consent Agenda
 - a. Minutes
 - b. Claims
 - c. Administrator Report
 - d. Financial Report
 - e. CD
 - f. Liquor License
5. Reports
 - a. Fillmore Central Schools
 - b. Liquor License Renewal
 - c. Tax Forfeiture Parcel
 - d. Building & Maintenance Report
 - e. EDA Board
 - f. Park Board
 - g. Library Board
 - h. Arts Board
6. Adjourn

**BACKGROUND INFORMATION
HARMONY CITY COUNCIL
REGULAR MEETING**

**June 12, 2018
7:00 P.M.**

**Council Room
Community Center**

1. Call To Order
2. Roll Call
3. Public Forum
4. Consent Agenda
 - a. Minutes
 - b. Claims
 - c. Administrator Report-See report.
 - d. Financial Report-See report.
 - e. CD-Cash in CD #43791.
 - f. Liquor License-Consider approval for Harmony Liquors, Harmony Golf Club, Estelle's Eatery and Bar, Wheelers Bar, Stoplight.
5. Reports
 - a. Fillmore Central Schools-Review drawings. Consider land swap. Discuss maintenance contract. Discuss project contribution.
 - b. Liquor License Renewal-Lisa Miller will be present to discuss liquor license renewal for On the Crunchy Side.
 - c. Tax Forfeiture Parcel- See county information.
 - d. Building & Maintenance Report-Dust control. Patching.
 - e. EDA Board-Update on bonding for trail.
 - f. Park Board
 - g. Library Board
 - h. Arts Board
6. Adjourn

MAY 8, 2018

REGULAR MEETING

HARMONY CITY COUNCIL

A Regular meeting of the Harmony City Council was called to order by Mayor Steve Donney at 7:00 PM. Present were Mayor Donney, Councilmembers Kyle Morem, Steve Sagen, Debbie Swenson and Lynn Mensink; Attorney Greg Schieber, Administrator Jerome Illg, Brian Michel, Terry Bigalk, Hannah Wingert, Lissa Blake and Eileen Schansberg.

PUBLIC FORUM:

No one appeared for Public Forum.

PUBLIC HEARING:

Mayor Donney opened the Public Hearing for the purpose of the LIQUOR FEE MODIFICATION. No public comments were made.

CONSENT AGENDA:

Motion by Mensink and seconded by Swenson to approve the Consent Agenda which consisted of the Minutes to the April 10, 2018 meeting, the Claims, Administrator's Report, Financial Report, the Sheriff's Report, Cashing CD #43790 to the General Fund, and approval for the Conservation Club's Liquor License and Noise Permits for July 3-5th. All present voting yes. Motion carried.

ANIMAL ORDINANCE:

A modification to the Animal Ordinance Section 91.04 to allow Chickens into Industrial or Ag Zoned areas within the City was discussed. Motion by Donney and seconded by Morem to AMEND CITY ORDINANCE CHAPTER 91, SECTION 91.04 RELATING TO FARM ANIMALS. The amendment would allow keeping chickens on industrial properties within any industrial zoning district subject to conditions. A permit would be required.

Voting for the modification was: Donney, Swenson, Mensink, Morem & Sagen

Voting against the modification was: No One

Abstained from voting was: No One

Absent from voting was: No One

This Ordinance Modification was adopted the 8th day of May, 2018.

Discussion held to creating and adding to the Fee Schedule a Permit fee of \$25 to the remaining first year and a \$50 fee thereafter for a two year Permit.

RESOLUTION 18-04:

Motion by Swenson and seconded by Mensink to adopt RESOLUTION NO. 18-04: A RESOLUTION MODIFYING A SCHEDULE OF FEES AND CHARGES FOR VARIOUS SERVICE, LICENSSES AND PERMITS FOR THE CITY OF HARMONY, MN.

Voting for the Resolution was: Swenson, Morem, Sagen, Mensink & Donney

Voting against the Resolution was: No One

Abstained from voting was; No One

Absent from Voting was: No One

The Motion passed and Resolution was adopted.

LIQUOR LICENSES:

A completed application was received from Pam's Corner & Convenience LLC for an Off-Sale Liquor License. Motion by Swenson and seconded by Sagen to approve Pam's Corner & Convenience, LLC for an Off-Sale Liquor License. All present voting yes. Motion carried.

A second application from Harmony Liquors for an Off-Sale was received but their utilities were not current. No action was taken.

BUILDING & MAINTENANCE:

Maintenance Staff Brian Michel discussed updating the current plow truck. Three bids were presented. Motion by Donney and seconded by Swenson to purchase the 2019 International 7400 SBA including Universal Equipment and trading in our current truck valued at \$44,000. There are currently funds that have been earmarked in the capital improvement fund for this purchase. All present voting yes. Motion carried.

Seal Coating bids were received for streets and avenues on the northeastern quadrant of the southeast side of the City. Motion by Swenson and seconded by Donney to approve the low alternative bid in the amount of \$51,834.00. It was to begin after July 4th with completion to be by the end of August. All present voting yes. Motion carried.

The new tractor was picked up but still needs the front fenders. Fenders will be installed when they come in.

Michel asked if internet could be installed at the shop for convenience. The council had no objection.

EDA BOARD:

Visitor Center is now open full time.

The Minnesota Legislature still has Harmony's bike trail extension in their bonding bill.

May 16th is Experience Harmony Round Table Discussion at the Golf Course.

PARK BOARD:

Council instructed the Maintenance Staff that if there is a dead tree in the parks that they can have it removed.

It was mentioned that the basketball court may need some repairs. Staff and the park board will discuss and look at it.

LIBRARY BOARD:

They anticipate receiving the used clothing fundraiser box in the next couple of weeks. It is planned to be put on the north end of the community center by the Library.

Woodwind Quintet is rescheduling for May 20th at the Jem Theatre.
Programs are scheduled for July 6th and August 1st.

Attorney Schieber stated that Harmony Ordinance stated that a Liquor License could not be held within 500 feet of a church or school. The ordinance may need to be reviewed and amended for current practice.

Upon no further business, Mayor Donney adjourned the meeting.

Mayor Steve Donney

Eileen Schansberg, Deputy Clerk

CITY OF HARMONY
City Council Claims for Review

06/08/18 2:58 PM

Page 1

June 11, 2018

Fund Descr	Department	Object of Expense	Vendor	Comments	Amount
Fund 101 General Fund					
General Fund		Union Central Pension Fund	CENTRAL PENSION FUND	pension contribution	\$264.00
General Fund		Health Insurance	I.U.O.E. LOCAL 49 FRINGE BENEF	Union Insurance-	\$3,720.00
General Fund		Union Dues	IUOE LOCAL #49	Union Dues Brian/Chris/Corey	\$103.50
General Fund		NCPERS Insurance	NCPERS GROUP LIFE INS	511800	\$48.00
General Fund		Life Insurance	USABLE LIFE	101421301G	\$75.10
General Fund	Administration	Dues	MN ASSOC OF SMALL CITIES	18-19 membership dues	\$609.45
General Fund	Administration	General Operating Supplies	BLUFF COUNTRY NEWSPAPER GROUP	Subscription Harmony News	\$28.00
General Fund	Administration	General Operating Supplies	HARMONY FOODS	Office supplies/coffee	\$23.96
General Fund	Civil Defense	Telephone	HARMONY TELEPHONE COMPANY	Sirens/DSL Phone	\$89.37
General Fund	Community Center	Cleaning Supplies	DALCO	cleaning supplies	\$195.88
General Fund	Community Center	Electric Utilities	HARMONY PUBLIC UTILITIES	Elec-Comm Ctr	\$1,304.02
General Fund	Community Center	Gas Utilities	MINNESOTA ENERGY	Comm Ctr-Gas service	\$181.12
General Fund	Community Center	General Operating Supplies	KINGSLEY MERCANTILE	softner salt/filter/bulbs	\$67.71
General Fund	Community Center	Landscaping Materials	HARMONY GARDENS & FLORAL, LLC	flower pots	\$79.97
General Fund	Community Center	Motor Fuels/Lubricants	KWIK TRIP,INC	Terry pickup Gas	\$51.26
General Fund	Community Center	Motor Fuels/Lubricants	S & S AUTOMOTIVE	oil-deep creep	\$10.69
General Fund	Community Center	Sewer Utilities	HARMONY PUBLIC UTILITIES	sewer-Comm Ctr	\$46.20
General Fund	Community Center	Telephone	HARMONY TELEPHONE COMPANY	Admin Phone/DSL	\$210.06
General Fund	Community Center	Water Utilities	HARMONY PUBLIC UTILITIES	water-Comm Ctr	\$29.03
General Fund	Community Development	Engineering Fees	STANTEC CONSULTING SERVICES, I	Engineering services Misc	\$1,113.89
General Fund	Community Development	Engineering Fees	STANTEC CONSULTING SERVICES, I	engineering service Walnut Farms	\$3,767.88
General Fund	Community Development	Engineering Fees	STANTEC CONSULTING SERVICES, I	Engineering services Hahn	\$2,227.00
General Fund	Community Development	Repair/Maint Other Improve	A-1 EXCAVATING, INC	Walnut Farms Pay Request 5	\$30,868.59
General Fund	Community Development	Repair/Maint Other Improve	TLC EXCAVATING	Hahn Project Installation of Utilities	\$35,097.25
General Fund	Community Events	General Operating Supplies	HARMONY FOODS	treats/water for style show-Golden Happe	\$78.77
General Fund	Community Events	General Operating Supplies	SILVERS, STEPHANIE	purchase PA System	\$30.00
General Fund	Community Events	Program Services	DOWE, BETTY	Harmony \$'s for programs reimbursed	\$50.00
General Fund	Community Events	Program Services	HARMONY FIRE RELIEF ASSOC	Donation to Fire Dept for presentation	\$50.00
General Fund	Ice & Snow Removal	Motor Fuels/Lubricants	KWIK TRIP,INC	Tractor-Diesel	\$114.68
General Fund	Ice & Snow Removal	Repair/Maint Vehicles	HAMMELL EQUIPMENT	replace alternator & belt Old plow truck	\$1,255.31
General Fund	Legal Services	Legal Fees	NETHERCUT SCHIEBER ATTORNEYS	services for May	\$188.50
General Fund	Personnel Administration	General Operating Supplies	CULLIGAN	wellness program	\$52.90
General Fund	Personnel Administration	General Operating Supplies	ILLG, JEROME	Wellness program	\$63.80
General Fund	Personnel Administration	General Operating Supplies	SCHANSBERG, EILEEN	Wellness program	\$128.12
General Fund	Police Department	Motor Fuels/Lubricants	SEVERSON OIL CO.	Gas-Squad	\$346.84
General Fund	Police Department	Telephone	HARMONY TELEPHONE COMPANY	Police Phone	\$46.58

CITY OF HARMONY
City Council Claims for Review

06/08/18 2:58 PM

Page 2

June 11, 2018

Fund Descr	Department	Object of Expense	Vendor	Comments	Amount
General Fund	Public Works Buildings	Electric Utilities	HARMONY PUBLIC UTILITIES	Elec-Shop	\$143.26
General Fund	Public Works Buildings	Gas Utilities	MINNESOTA ENERGY	Shop-Gas service	\$190.99
General Fund	Public Works Buildings	General Operating Supplies	HARMONY FOODS	rubbing alcohol	\$3.78
General Fund	Public Works Buildings	General Operating Supplies	KINGSLEY MERCANTILE	bits/putty	\$25.18
General Fund	Public Works Buildings	General Operating Supplies	MISSISSIPPI WELDERS SUPPLY CO	oxygen CO Cylinders	\$34.10
General Fund	Public Works Buildings	Motor Fuels/Lubricants	KINGSLEY MERCANTILE	fuel	\$21.99
General Fund	Public Works Buildings	Repair/Maint Other Improve	RUN RIGHT POWER LLC	sharpen chainsaw blade	\$7.00
General Fund	Public Works Buildings	Small Tools and Minor Equip	KINGSLEY MERCANTILE	rake/broom/strap	\$66.48
General Fund	Public Works Buildings	Telephone	HARMONY TELEPHONE COMPANY	Shop DSL	\$74.76
General Fund	Public Works Buildings	Water Utilities	HARMONY PUBLIC UTILITIES	water-Shop	\$22.03
General Fund	Streets	Motor Fuels/Lubricants	SEVERSON OIL CO.	diesel-tractor	\$109.03
General Fund	Streets	Other Equipment	HAMMELL EQUIPMENT	Tractor	\$6,500.00
General Fund	Streets	Repair/Maint Other Improve	CHUCK LARSON DUST CONTROL	Dust Control Co Rd stubs	\$3,422.00
General Fund	Streets	Repair/Maint Other Improve	RUN RIGHT POWER LLC	parts for mower	\$19.05
General Fund	Streets	Street Maint Materials	BRUENING ROCK PRODUCTS, INC	street rock	\$197.23
General Fund	Streets	Street Maint Materials	BRUENING ROCK PRODUCTS, INC	rock for gravel sections of city streets	\$2,825.84
General Fund	Streets	Street Maint Materials	MIDWEST PATCH	road patch	\$772.80
General Fund	Visitor Center	Cleaning Supplies	DALCO	cleaning supplies	\$47.39
General Fund	Visitor Center	Electric Utilities	HARMONY PUBLIC UTILITIES	Elec-Vis Ctr	\$107.05
General Fund	Visitor Center	Gas Utilities	MINNESOTA ENERGY	Vis Ctr-Gas service	\$114.06
General Fund	Visitor Center	General Operating Supplies	KINGSLEY MERCANTILE	connectors/snaps/bulbs	\$51.32
General Fund	Visitor Center	Landscaping Materials	HARMONY GARDENS & FLORAL, LLC	flower pots	\$229.94
General Fund	Visitor Center	Motor Fuels/Lubricants	KWIK TRIP,INC	Terry pickup Gas	\$51.26
General Fund	Visitor Center	Repair/Maint Bldg/Structures	MOREM ELECTRIC, INC	ballast /bulbs	\$88.64
General Fund	Visitor Center	Sewer Utilities	HARMONY PUBLIC UTILITIES	sewer-Vis Ctr	\$31.32
General Fund	Visitor Center	Water Utilities	HARMONY PUBLIC UTILITIES	water-Vis Ctr	\$19.73
Fund 101 General Fund					\$97,793.66
Fund 211 Library Fund					
Library Fund	Library	Media-Audio	INGRAM LIBRARY SERVICES, INC	Audio books	\$19.25
Library Fund	Library	Media-Audio	INGRAM LIBRARY SERVICES, INC	Audio books	\$162.18
Library Fund	Library	Media-Books	BAKER & TAYLOR	books	\$74.52
Library Fund	Library	Media-Books	BAKER & TAYLOR	books	\$21.61
Library Fund	Library	Media-Books	BAKER & TAYLOR	books	\$10.81
Library Fund	Library	Media-Books	BAKER & TAYLOR	books	\$243.60
Library Fund	Library	Media-Video	AMAZON CAPITAL SERVICES	DVDs	\$220.45
Library Fund	Library	Media-Video	AMAZON CAPITAL SERVICES	DVDs	\$16.20
Library Fund	Library	Media-Video	AMAZON CAPITAL SERVICES	DVDs	\$21.19

CITY OF HARMONY
City Council Claims for Review

06/08/18 2:58 PM

Page 3

June 11, 2018

Fund Descr	Department	Object of Expense	Vendor	Comments	Amount
Library Fund	Library	Office Accessories	QUILL CORPORATION	copy paper	\$216.70
Library Fund	Library	Postage	SOUTHEASTERN LIBRARIES COOP	postage on mailers	\$23.97
Library Fund	Library	Printed Forms	SOUTHEASTERN LIBRARIES COOP	mailers	\$15.30
Library Fund	Library	Program Supplies	HARMONY FOODS	cookies for Chione Concert	\$18.95
Library Fund	Library	Program Supplies	ORIENTAL TRADING CO., INC	4th of July prizes	\$136.37
Library Fund	Library	Software Service Fees	SOUTHEASTERN LIBRARIES COOP	basic services & PC Support	\$587.42
Library Fund	Library	Telephone	HARMONY TELEPHONE COMPANY	Library Phone	\$47.88
Fund 211 Library Fund					\$1,836.40
Fund 222 Fire Fund					
Fire Fund	Fire Department	Equipment Parts	HAMMELL EQUIPMENT	fire truck battery	\$83.00
Fire Fund	Fire Department	Motor Fuels/Lubricants	SEVERSON OIL CO.	diesel-firetruck	\$117.23
Fire Fund	Fire Department	Other Equipment	MOTOROLA SOLUTIONS, INC	1 Handheld Radio and 2 Truck Radios	\$9,124.72
Fire Fund	Fire Department	Small Tools and Minor Equip	CLAREY S SAFETY EQUIPMENT, INC	helmet/light/shutoff bail	\$543.00
Fire Fund	Fire Stations and Bldgs	Building Repair Materials	GRAYBAR ELECTRIC CO. INC	balance due on Light bulb sleeves	\$20.00
Fire Fund	Fire Stations and Bldgs	Electric Utilities	HARMONY PUBLIC UTILITIES	Elec-Fire hall	\$238.45
Fire Fund	Fire Stations and Bldgs	Gas Utilities	MINNESOTA ENERGY	Firehall=Gas service	\$87.42
Fire Fund	Fire Stations and Bldgs	Landscaping Materials	J JOHNSON	Sweeping Lawn Firehall	\$85.00
Fire Fund	Fire Stations and Bldgs	Sewer Utilities	HARMONY PUBLIC UTILITIES	sewer-Firehall	\$23.80
Fire Fund	Fire Stations and Bldgs	Telephone	HARMONY TELEPHONE COMPANY	Fire Phone	\$43.72
Fire Fund	Fire Stations and Bldgs	Water Utilities	HARMONY PUBLIC UTILITIES	water-Fire hall	\$15.03
Fund 222 Fire Fund					\$10,381.37
Fund 223 Ambulance Fund					
Ambulance Fund	Ambulance Service	Financial Services Fees	EXPERT T BILLING	billing services for April	\$378.00
Ambulance Fund	Ambulance Service	General Operating Supplies	CHANNING L. BETE CO., INC	training supplies	\$141.35
Ambulance Fund	Ambulance Service	Medical Supplies	MISSISSIPPI WELDERS SUPPLY CO	medical oxygen	\$64.54
Ambulance Fund	Ambulance Service	Miscellaneous	MN DEPT OF HUMAN SERVICES-MMIS	2018 Fed Share Amb supplemental	\$727.24
Ambulance Fund	Ambulance Service	Miscellaneous	MN DEPT OF HUMAN SERVICES-MMIS	2017 Fed Share Amb supplemental pmt	\$579.87
Ambulance Fund	Ambulance Service	Motor Fuels/Lubricants	KWIK TRIP,INC	Amb-Diesel	\$186.60
Ambulance Fund	Ambulance Service	Small Tools and Minor Equip	BLUFF COUNTRY COMPUTER WORKS	training DVD player	\$64.95
Ambulance Fund	Ambulance Service	Small Tools and Minor Equip	ELAN FINANCIAL SERVICES	Munger ELK Lifting Cushion	\$1,599.00
Ambulance Fund	Ambulance Service	Software Service Fees	IMAGE TREND INC	Field Bridge support-Amb	\$400.00
Ambulance Fund	Ambulance Service	Telephone	VERIZON WIRELESS	Amb cell phone	\$47.60
Fund 223 Ambulance Fund					\$4,189.15
Fund 251 Park Fund					
Park Fund	Parks	Electric Utilities	HARMONY PUBLIC UTILITIES	Elec-parks	\$182.66

CITY OF HARMONY
City Council Claims for Review

06/08/18 2:58 PM

Page 4

June 11, 2018

Fund Descr	Department	Object of Expense	Vendor	Comments	Amount
Park Fund	Parks	Equipment Parts	HAMMELL EQUIPMENT	sprayer hose/resistor	\$9.60
Park Fund	Parks	Equipment Parts	HAMMELL EQUIPMENT	oil filters/oil for mowers	\$68.11
Park Fund	Parks	General Operating Supplies	CROP PRODUCTION SERVICES	grass seed	\$45.00
Park Fund	Parks	General Operating Supplies	KINGSLEY MERCANTILE	small items	\$58.66
Park Fund	Parks	General Operating Supplies	KINGSLEY MERCANTILE	bolts/rings/elbows	\$36.94
Park Fund	Parks	General Operating Supplies	KINGSLEY MERCANTILE	faucet connectors & park bathroom suppli	\$72.35
Park Fund	Parks	General Operating Supplies	KINGSLEY MERCANTILE	parks repair parts	\$141.65
Park Fund	Parks	Landscaping Materials	CROP PRODUCTION SERVICES	weed killer	\$80.58
Park Fund	Parks	Landscaping Materials	HARMONY GARDENS & FLORAL, LLC	flower pots	\$319.92
Park Fund	Parks	Motor Fuels/Lubricants	KWIK TRIP,INC	mower-Gas	\$114.25
Park Fund	Parks	Other Rentals	ON SITE SANITATION	partial restroom rental	\$7.93
Park Fund	Parks	Other Rentals	ON SITE SANITATION	bathroom rental	\$74.00
Park Fund	Parks	Repair/Maint Bldg/Structures	SOUTHERN MINNESOTA SEAMLESS, L	gutter work-park restrooms	\$400.00
Park Fund	Parks	Repair/Maint Machinery/Equip	FLAGHOUSE	2 swing seats	\$56.00
Park Fund	Parks	Repair/Maint Machinery/Equip	SOLBERG WELDING	patch lawn roller	\$41.64
Park Fund	Parks	Repair/Maint Other Improve	RUN RIGHT POWER LLC	trimmer line, lawn mower blades	\$111.53
Park Fund	Parks	Sewer Utilities	HARMONY PUBLIC UTILITIES	sewer-parks	\$118.00
Park Fund	Parks	Small Tools and Minor Equip	KINGSLEY MERCANTILE	sprayer kit/lawn spreader/batteries/snaps	\$56.73
Park Fund	Parks	Water Utilities	HARMONY PUBLIC UTILITIES	water-Parks	\$148.12
Fund 251 Park Fund					\$2,143.67
Fund 261 Arts Fund					
Arts Fund	Arts	Advertising	BLUFF COUNTRY NEWSPAPER GROUP	Ads for Poetry Read	\$180.00
Arts Fund	Arts	Advertising	SLINDEE, LORI	reimbursed for Advertising-Poetry Read	\$39.72
Arts Fund	Arts	Program Services	JEM THEATRE	Support for Movie Camp	\$500.00
Arts Fund	Arts	Program Services	SLINDEE, LORI	reimbursed for posters/food-Poetry Read	\$54.31
Fund 261 Arts Fund					\$774.03
Fund 601 Water Fund					
Water Fund		MN Water Testing Fee Due	MN DEPT OF HEALTH	Water connection fees	\$949.00
Water Fund	Water Utility Operation	Chemicals and Chem Products	HACH COMPANY	chlorine packs/flouride paks	\$216.95
Water Fund	Water Utility Operation	Chemicals and Chem Products	HAWKINS WATER TREATMENT GROU	chlorine cylinders	\$15.00
Water Fund	Water Utility Operation	Electric Utilities	HARMONY PUBLIC UTILITIES	Elec-pumphouses	\$767.18
Water Fund	Water Utility Operation	Gas Utilities	MINNESOTA ENERGY	pumphouses-Gas service	\$60.09
Water Fund	Water Utility Operation	General Operating Supplies	KINGSLEY MERCANTILE	small items washers/spray nozzle	\$12.51
Water Fund	Water Utility Operation	Laboratory & Testing Fees	UTILITY CONSULTANTS, INC	Water Testing Lab Fees	\$40.00
Water Fund	Water Utility Operation	Repair/Maint Other Improve	MOREM ELECTRIC, INC	chlorine scales @Well 1 & 2	\$513.89
Water Fund	Water Utility Operation	Training Fees	MN DEPT OF HEALTH	Water School-Brian	\$32.00

CITY OF HARMONY
City Council Claims for Review

06/08/18 2:58 PM

Page 5

June 11, 2018

Fund Descr	Department	Object of Expense	Vendor	Comments	Amount
Fund 601 Water Fund					\$2,606.62
Fund 602 Sewer Fund					
Sewer Fund	Sewer Operation	Chemicals and Chem Products	HAWKINS WATER TREATMENT GROU	chlorine cylinders	\$10.00
Sewer Fund	Sewer Operation	Electric Utilities	HARMONY PUBLIC UTILITIES	Elec-WWTP/Lifts	\$1,386.07
Sewer Fund	Sewer Operation	Gas Utilities	MINNESOTA ENERGY	WWTP-Gas service	\$348.06
Sewer Fund	Sewer Operation	General Operating Supplies	KINGSLEY MERCANTILE	small items	\$20.32
Sewer Fund	Sewer Operation	Laboratory & Testing Fees	UTILITY CONSULTANTS, INC	WW testing Lab Fees	\$1,019.50
Sewer Fund	Sewer Operation	Motor Fuels/Lubricants	KWIK TRIP,INC	Chris pickup-Gas	\$91.89
Sewer Fund	Sewer Operation	Repair/Maint Other Equipment	FIRST SYSTEMS TECHNOLOGY, INC	verification of Flow Meter	\$650.00
Sewer Fund	Sewer Operation	Repair/Maint Other Improve	MOREM ELECTRIC, INC	wire GFI outlets	\$82.27
Sewer Fund	Sewer Operation	Repair/Maint Other Improve	ROCHESTER PLUMBING & HEATING	Clean/Camera & Video 2140 feet sewer lin	\$5,885.00
Sewer Fund	Sewer Operation	Sewer Utilities	HARMONY PUBLIC UTILITIES	sewer-WWTP	\$1,213.48
Sewer Fund	Sewer Operation	Small Tools and Minor Equip	KINGSLEY MERCANTILE	sump pump/door stump	\$120.78
Sewer Fund	Sewer Operation	Small Tools and Minor Equip	USA BLUEBOOK	Air compressor/Inlet filter	\$327.85
Sewer Fund	Sewer Operation	Small Tools and Minor Equip	USA BLUEBOOK	Repair clamp kit	\$393.10
Sewer Fund	Sewer Operation	Telephone	HARMONY TELEPHONE COMPANY	Lift Stations Dialer/DSL Phone	\$162.57
Sewer Fund	Sewer Operation	Water Utilities	HARMONY PUBLIC UTILITIES	water-WWTP	\$758.58
Fund 602 Sewer Fund					\$12,469.47
Fund 603 Solid Waste Fund					
Solid Waste Fund	Solid Waste Operation	Refuse/Garbage Disposal	SOLBERG WELDING	push up tree dump	\$100.00
Fund 603 Solid Waste Fund					\$100.00
Fund 604 Electric Fund					
Electric Fund		Utility Deposits	HARMONY PUBLIC UTILITIES	Deposit for Delicia Olson to Utilities	\$150.00
Electric Fund		Utility Deposits	HARMONY PUBLIC UTILITIES	Deposit for I Kingsley to utilities	\$150.00
Electric Fund		Utility Deposits	HARMONY PUBLIC UTILITIES	Deposit for M Luck to Utilities	\$150.00
Electric Fund	Electric Utility Operation	Electric Power for Resale	MI ENERGY COOPERATIVE	Power for Resale	\$59,521.21
Electric Fund	Electric Utility Operation	Electric Utilities	HARMONY PUBLIC UTILITIES	Elec-Town Clock	\$12.93
Electric Fund	Electric Utility Operation	Electric Utilities	HARMONY PUBLIC UTILITIES	Elec-Streetlights	\$1,115.36
Electric Fund	Electric Utility Operation	Miscellaneous	ENERGY REBATE	Energy Rebate-Schansberg	\$25.00
Electric Fund	Electric Utility Operation	Motor Fuels/Lubricants	SEVERSON OIL CO.	gas-Chris' pickup	\$74.89
Electric Fund	Electric Utility Operation	Repair/Maint Other Improve	GOPHER STATE ONE CALL, INC	locates/no locates	\$43.50
Electric Fund	Electric Utility Operation	Repair/Maint Other Improve	MOREM ELECTRIC, INC	streetlights repaired Hwy 52	\$352.00
Electric Fund	Electric Utility Operation	Repair/Maint Other Improve	MOREM ELECTRIC, INC	drop overhead wires 260 3rd Ave SE tree	\$93.47
Electric Fund	Electric Utility Operation	Repair/Maint Other Improve	MOREM ELECTRIC, INC	relocate underground 55 3rd Ave NW	\$1,135.95
Electric Fund	Electric Utility Operation	Repair/Maint Other Improve	MOREM ELECTRIC, INC	repair underground at336 5th Ave SE	\$1,276.06

CITY OF HARMONY
City Council Claims for Review

06/08/18 2:58 PM

Page 6

June 11, 2018

Fund Descr	Department	Object of Expense	Vendor	Comments	Amount
Electric Fund	Electric Utility Operation	Repair/Maint Other Improve	MOREM ELECTRIC, INC	repair undergournd N lift station	\$1,733.19
Electric Fund	Electric Utility Operation	Repair/Maint Other Improve	MOREM ELECTRIC, INC	underground Event Ctr & Koliha Insurance	\$2,161.45
Electric Fund	Electric Utility Operation	Repair/Maint Other Improve	MOREM ELECTRIC, INC	light Selvig Park	\$360.04
Electric Fund	Electric Utility Operation	Repair/Maint Other Improve	MOREM ELECTRIC, INC	repair underground at 285 Niagara Ct	\$896.65
Fund 604 Electric Fund					\$69,251.70
Fund 605 Storm Water Fund					
Storm Water Fund	Storm Water Operation	Equipment Parts	HAMMELL EQUIPMENT	resistor for sweeper	\$32.00
Storm Water Fund	Storm Water Operation	Motor Fuels/Lubricants	KWIK TRIP,INC	Sweeper-Diesel	\$73.73
Storm Water Fund	Storm Water Operation	Repair/Maint Other Improve	BLAINES AUTO	sweeper A/C repair	\$273.35
Fund 605 Storm Water Fund					\$379.08
Fund 620 Economic Development Authority					
Economic Development	Economic Development	General Operating Supplies	KINGSLEY MERCANTILE	paint/shovels/hard hats	\$120.21
Economic Development	Economic Development	Taxes, Licenses & Permits	MN DEPT OF TRANSPORTATION	sign permit renewal	\$60.00
Economic Development	Economic Development	Telephone	HARMONY TELEPHONE COMPANY	EDA Phone	\$35.16
Fund 620 Economic Development Authority					\$215.37
					\$202,140.52

ADMINISTRATOR'S REPORT

For the Period from May 8, 2018 to June 12, 2018

ADMINISTRATION

MNDOT has approved permit for Historical Society to install 6 signs in right-of-way. They have been installed in the past week. We will pour concrete pads for two signs.

Have begun process of updating Wellhead Protection Plan for this well.

Submitted information to update Water Supply Plan.

Coordinating with David Drown Associates to update our financial plan. Will be presented at our council meeting.

All grading is complete for paving street for Hammel House Development project. Utilities, curb, and gutter is complete. Paving and final restoration will be completed within the next week.

Mailed out renewal notices to liquor licensees.

Gathering quotes and options for sound system for council room.

UTILITY/BUILDING COMMITTEE

Final lift will be installed within next week for 2017 Street and Utility Project. Yard restoration will be done within the next week.

MNDOT has finished up mill and overlay on TH139 from Hwy 52 to State Line in 2017. MNDOT hopes to be closing out project soon for remaining funds determination. Will be starting on mill and overlay on Hwy 52 from north industrial park to Hwy 16 soon.

Development agreement has been approved for Joe Hahn project. Contractor has completed project. Contractor will be billed amount.

Ordered snowplow truck.

Gathered estimate to repair with mill and overlay some street patches.

Discussed with school land swap by community center for baseball field. Discuss recommendation from committee to contribute towards parking lot.

Will need to repair underground electric service for Welcome Sign light on east side of town. May consider installing a solar panel instead.

City of Harmony
Cash Balance Report
April 2017 and April 2018

Fund Description	April-17	April-18
General Fund	681,520.58	735,250.19
Revolving Loan Fund	21,975.58	80,088.42
Commercial Rehab Fund	5,193.33	11,744.96
Library Fund	(21,367.24)	(29,652.99)
Fire Fund	50,000.53	17,626.84
Ambulance Fund	19,320.05	87,554.95
Park Fund	49,499.41	50,515.69
Arts Fund	724.39	1,305.51
GO Improvement 2010A-3rd St SW	32,958.29	34,099.84
GO Tax Abatement 2013A-Comm Cntr	2,463.52	4,937.72
GO Improvement 2013B-Heritage Grove	(5,842.60)	(4,140.44)
GO Improvement 2014A-1st Ave SW	106,638.35	103,812.74
GO Improvement 2017A-Various		99,310.56
Capital Projects Fund	646,553.24	833,794.22
TIF District #5-Antique Mall	125.29	404.77
TIF District #6-HECO	179.42	14.23
2017 Street and Utility Project	(71,159.11)	74,821.31
Water Fund	190,180.63	203,631.28
Sewer Fund	19,401.02	42,312.43
Solid Waste Fund	2,451.12	2,565.20
Electric Fund	542,478.13	633,376.66
Storm Water Fund	6,268.38	5,585.27
Economic Development Fund	39,753.52	71,241.73
Total	2,319,315.83	3,060,201.09

CONSTRUCTION PLANS FOR FILLMORE CENTRAL PARKING LOT

HARMONY, MINNESOTA

LEGEND

EXISTING FEATURES

◆ BENCH MARK	⊕ ELEC POLE
● FOUND PIPE	▨ ELEC TRANSFORMER BOX
○ STAKED PIPE	⊕ GAS METER
⊠ AC UNIT	⊕ GAS VALVE
⊙ FENCE POST	⊠ TELE PEDESTAL
▶ FLAG POLE	— — — — — CENTER LINE
○ GUARD POST	⌒ EDGE OF WOODS
└ GUY ANCHOR	○—○—○—○—○ FENCE CHAIN LINK
○ SHRUB	— OHE — OVERHEAD ELECTRIC
└ SIGN SINGLE POST	— > — SANITARY SEWER
☀ TREE CONIFER	— SS — SS — SANITARY SEWER SERVICE
☀ TREE DECIDUOUS	— > — STORM SEWER
⊗ SANITARY CLEANOUT	— UGC — UNDERGROUND CABLE TV
⊙ SANITARY MANHOLE	— UGE — UNDERGROUND ELECTRIC
□ STORM CATCH BASIN	— FOC — UNDERGROUND FIBER OPTIC
⊙ STORM INLET	— GAS — UNDERGROUND GAS
⊙ STORM MANHOLE	— UGT — UNDERGROUND TELE
⊕ WATER CURB STOP	— — WATERMAIN
⊕ WATER HYDRANT	— WS — WS — WATERMAIN SERVICE
⊕ WATER METER	— — — — — RIGHT OF WAY EXISTING
⊕ WATER VALVE	⊠ RANDOM RIPRAP
⊕ ELEC LIGHT POLE	▨ BUILDING WALL HATCH
⊕ ELEC METER	⊠ CONCRETE SURFACE
⊕ ELEC PEDESTAL	⊠ GRAVEL SURFACE

PROPOSED FEATURES

▲ APRON PROPOSED	— > — SANITARY SEWER PROPOSED
● ^{CO} SANITARY CLEANOUT	— SS — SS — SANITARY SERVICE PROPOSED
● SANITARY MANHOLE	— > — STORM SEWER PROPOSED
■ STORM CATCH BASIN	— — WATERMAIN PROPOSED
● STORM MANHOLE	— WS — WS — WATERMAIN SERVICE PROPOSED
⊕ WATER CURB STOP	***** SILT FENCE
⊕ WATER HYDRANT	▨ EROSION CONTROL BLANKET
⊕ WATER VALVE PROPOSED	



INDEX	
SHEET	DESCRIPTION
1	TITLE SHEET
2	CONSTRUCTION NOTES & DETAILS
3	SITE PLAN
4	GRADING PLAN

OWNER: I.S.D. 2198
PO BOX 50
PRESTON, MN 55965
CONTACT: RICHARD KEITH
PH: (507) 765-3809

CIVIL ENGINEER: WIDSETH SMITH NOLTING
3777 40TH AVENUE NW SUITE 200
ROCHESTER, MN 55901
CONTACT: CRAIG BRITTON
PH: (507) 292-8743

GOVERNING SPECIFICATIONS

THE 2018 EDITION OF THE MINNESOTA DEPARTMENT OF TRANSPORTATION "STANDARD SPECIFICATIONS FOR CONSTRUCTION" SHALL GOVERN.

THE SUBSURFACE UTILITY INFORMATION IN THIS PLAN IS UTILITY QUALITY LEVEL D. THIS QUALITY LEVEL WAS DETERMINED ACCORDING TO THE GUIDELINES OF C/ASCE 38-02, ENTITLED "STANDARD GUIDELINES FOR THE COLLECTION AND DEPICTION OF EXISTING SUBSURFACE UTILITY DATA".

ALL UNDERGROUND AND OVERHEAD UTILITY LOCATIONS SHOWN ARE APPROXIMATE. THERE MAY BE ADDITIONAL UNDERGROUND AND OVERHEAD UTILITIES NOT SHOWN ON THE PLAN. IT IS THE CONTRACTORS RESPONSIBILITY TO REQUEST A GOPHER STATE ONE CALL PRIOR TO THE START OF ANY CONSTRUCTION.



I HEREBY CERTIFY THAT THIS PLAN, SPECIFICATION OR REPORT THAT I AM A DULY LICENSED PROFESSIONAL ENGINEER UNDER THE LAWS OF THE STATE OF MINNESOTA.
Craig Britton
CRAIG N. BRITTON DATE: 05/29/2018 LIC. NO. 44228

DATE	REV#	DESCRIPTION

DATE:	MAY 2018
SCALE:	AS SHOWN
DRAWN BY:	B.R.B.
CHECKED BY:	C.N.B.
JOB NUMBER:	1070R0117.000

CONSTRUCTION/SOIL NOTES

GRADING, BASE AND SURFACE

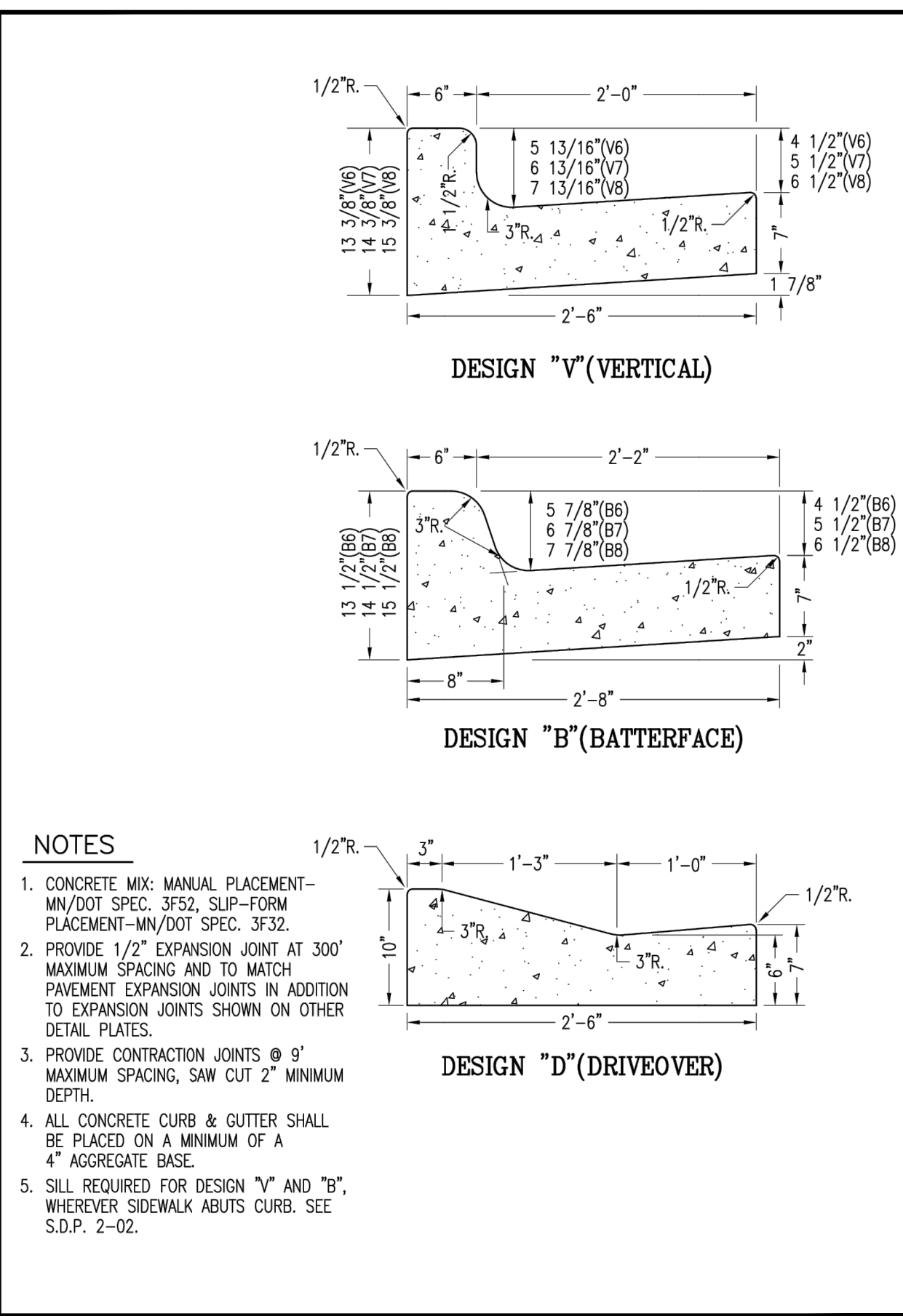
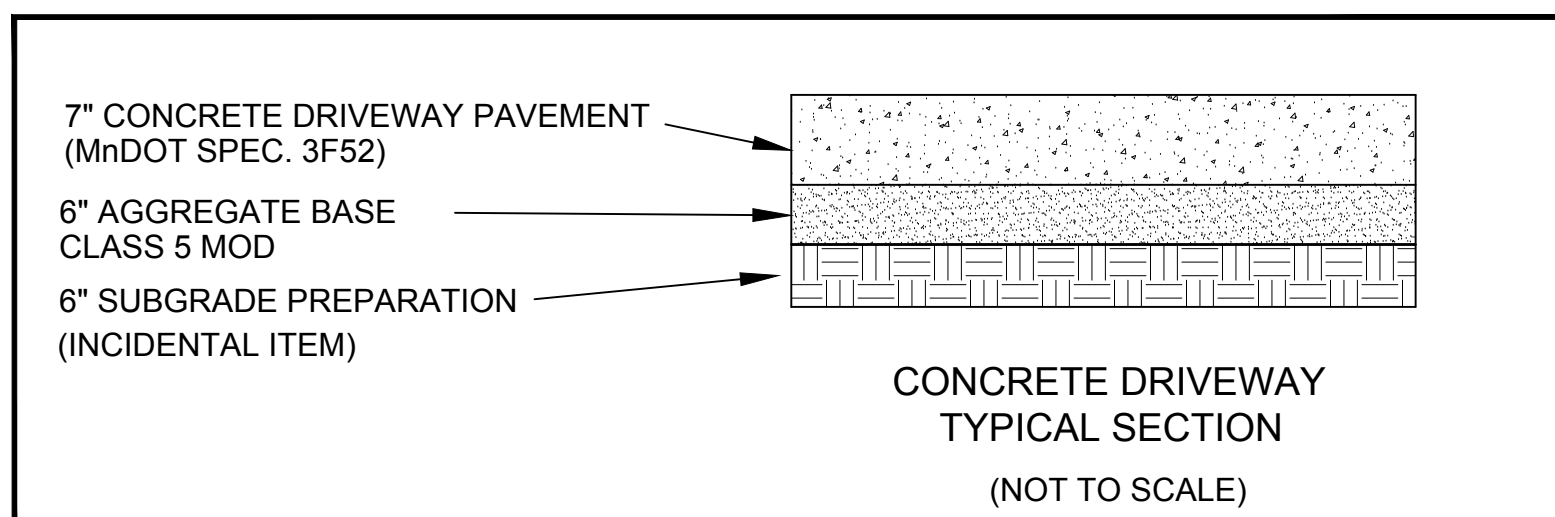
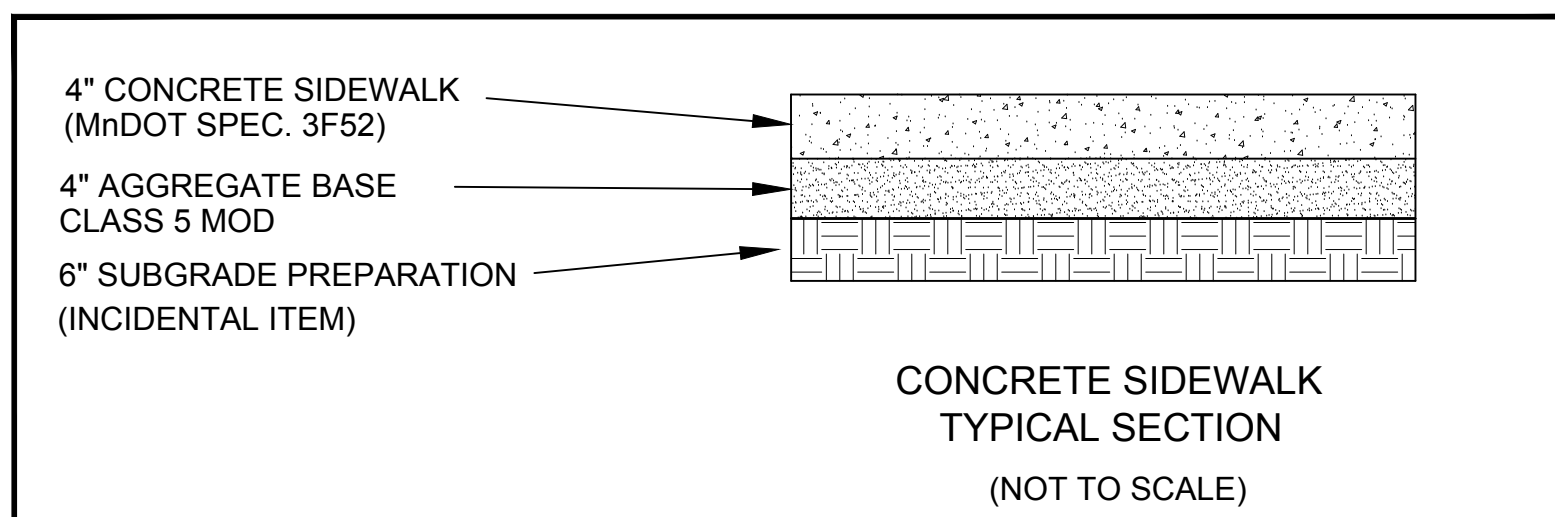
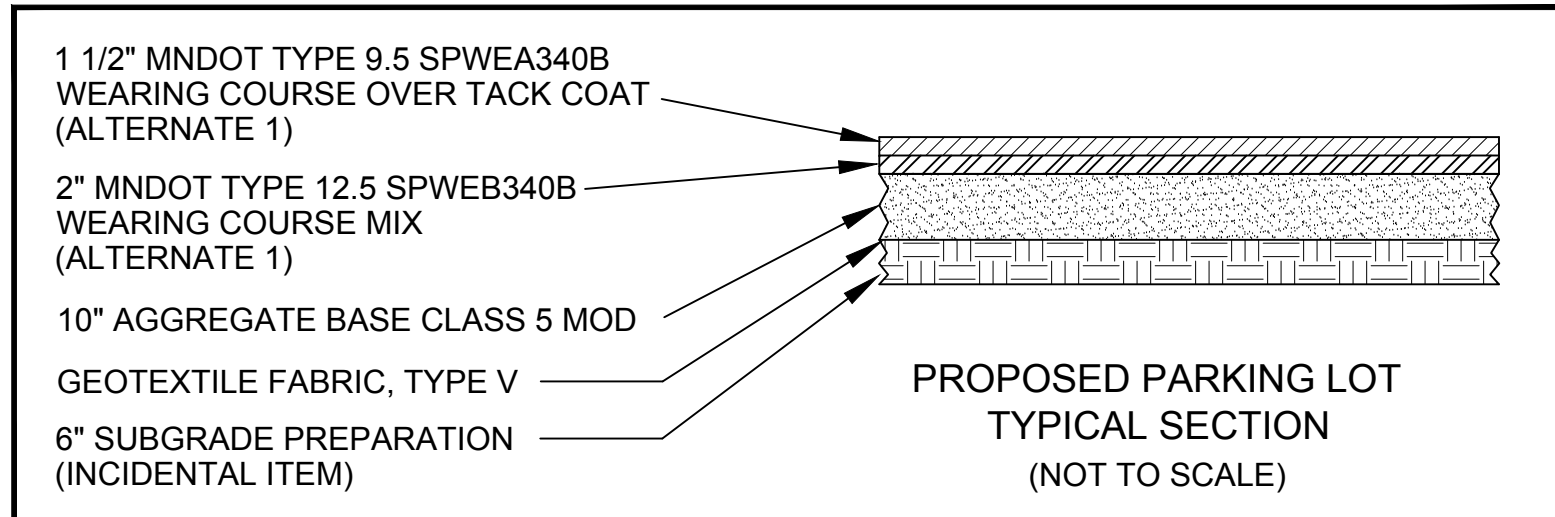
- TOP OF THE GRADING SUBSTRATE (GRADING GRADE) IS DEFINED AS THE BOTTOM OF THE CLASS 5 AGGREGATE BASE.
- UNSUITABLE MATERIALS ARE TOPSOILS, DEBRIS, PEAT, MUCK AND ORGANIC OR OTHER UNSTABLE SOILS.
- STRIP SOD AND TOPSOIL FROM AREAS TO BE DISTURBED BY CONSTRUCTION AND REUSE AS SLOPE DRESSING.
- ALL TOPSOIL STRIPPING SHALL BE CONSIDERED INCIDENTAL TO COMMON EXCAVATION QUANTITIES.
- THE ORGANIC PORTIONS OF THE SURFICIAL DEPOSITS SHOULD BE REMOVED WITH A MINIMUM 1' DEEP SUBCUT IN THE PROPOSED PARKING LOT AREAS PRIOR TO CONSTRUCTION OF THE PAVEMENT SECTION. BACKFILL WITH CLASS 5 AGGREGATE BASE MODIFIED. ANY UNCONTAMINATED COMMON EMBANKMENT MATERIAL REMOVED FROM THE EXISTING SUBGRADE AREA MAY BE USED IN OTHER AREAS DESIGNATED FOR COMMON EMBANKMENT MATERIAL.
- EXCESS TOPSOIL AND MUCK MATERIAL SHALL BE USED THROUGHOUT THE PROJECT AND AS DIRECTED BY THE ENGINEER.
- OBTAIN COMPACTION ON THE GRADING PORTIONS OF PERMANENT CONSTRUCTION IN ACCORDANCE WITH THE "QUALITY COMPACTION METHOD" REQUIREMENTS.
- COMPACTION OF THE AGGREGATE BASE LAYER SHALL BE OBTAINED IN ACCORDANCE WITH THE "QUALITY COMPACTION METHOD". COMPACTION SHALL BE PERFORMED IN ACCORDANCE WITH SECTION D.2 OF THE (2211) AGGREGATE BASE SPECIFICATION, INCLUDED IN THE MnDOT STANDARD SPECIFICATION FOR CONSTRUCTION.
- THE BOTTOM OF ALL SUBCUTS SHALL BE SHAPED AND COMPACTED BY THE "QUALITY COMPACTION METHOD". THE CONTRACTOR SHALL USE A MINIMUM OF 4 PASSES OF AN APPROVED COMPACTION DEVICE.
- WHERE CONNECTING TO THE INPLACE ROADWAYS AT THE TERMINI OF PROPOSED CONSTRUCTION, CUT VERTICALLY TO THE BOTTOM OF THE INPLACE SURFACING OR TO THE BOTTOM OF THE NEW SURFACING, WHICHEVER IS DEEPER, THEN 1(V):20(H) TO THE BOTTOM OF THE RECOMMENDED SUBGRADE EXCAVATION, UNLESS OTHERWISE NOTED.
- PROVIDE 1(V):20(H) LONGITUDINAL TAPERS BETWEEN CHANGES IN SUBGRADE AND SUBCUT DEPTHS.
- DITCH BOTTOMS, TOE OF FILL, CUT ROUNDOUTS AND THE TOP EDGE OF THE BACKSLOPES SHALL BE ROUNDED REGARDLESS OF THE SECTION USED ON THE CROSS SECTION SHEETS.
- PROVIDE FOR A UNIFORM BITUMINOUS TACK COAT BETWEEN ALL BITUMINOUS COURSES. ALL COSTS ASSOCIATED WITH THE FURNISHING AND PLACEMENT OF THE TACK COAT SHALL BE CONSIDERED INCIDENTAL TO OTHER ITEMS BID. THE TACK COAT SHALL BE IN ACCORDANCE WITH MN/DOT SPECIFICATION 2357.
- AGGREGATE BASE CLASS 5 MODIFIED SHALL BE INCORPORATED INTO THE SUBGRADE AS STABILIZING AGGREGATE TO ACHIEVE SATISFACTORY SURFACE STABILITY AT LOCATIONS DEEMED NECESSARY BY THE ENGINEER. GRANULAR MATERIAL WHICH IS FURNISHED BY THE CONTRACTOR SHALL BE STABILIZED, IF NECESSARY, AT THE CONTRACTOR'S EXPENSE. WHERE STABILIZING AGGREGATE IS DEEMED NECESSARY, IT SHALL BE PLACED AT A RATE OF APPROXIMATELY 200 LBS/SY. AGGREGATE BASE CLASS 5 MODIFIED MATERIAL USED AS STABILIZING AGGREGATE SHALL BE PAID FOR BY THE TON AS AGGREGATE BASE CLASS 5 MODIFIED.
- PROVIDE A SAWCUT WHERE PLACING NEW PAVEMENT ADJACENT TO INPLACE PAVEMENT TO ENSURE A UNIFORM JOINT.
- ALL PEDESTRIAN RAMPS SHALL MEET THE PUBLIC RIGHT-OF-WAY ACCESSIBILITY GUIDELINES (PROWAG), TO COMPLY WITH THE AMERICANS WITH DISABILITIES ACT.
- CONNECT TO EXISTING CONCRETE CURB & GUTTER AND SIDEWALK IN ACCORDANCE WITH MN/DOT STATE AID CONCRETE PAVEMENT REHABILITATION BEST PRACTICES MANUAL, REPAIR TYPE SA-CG AND SA-SW, RESPECTIVELY.

TURF ESTABLISHMENT

- PLACE A MINIMUM OF 4 INCHES OF TOPSOIL IN AREAS SCHEDULED FOR PERMANENT TURF ESTABLISHMENT.
- ALL EXPOSED SOIL AREAS MUST BE STABILIZED AS SOON AS POSSIBLE TO LIMIT SOIL EROSION BUT IN NO CASE LATER THAN FOURTEEN (14) DAYS AFTER THE CONSTRUCTION ACTIVITY IN THAT PORTION OF THE SITE HAS TEMPORARILY OR PERMANENTLY CEASED.
- PROVIDE COMMERCIAL FERTILIZER TYPE 3, OR EQUIVALENT ON ALL AREAS TO BE SEEDED (INCIDENTAL ITEM).

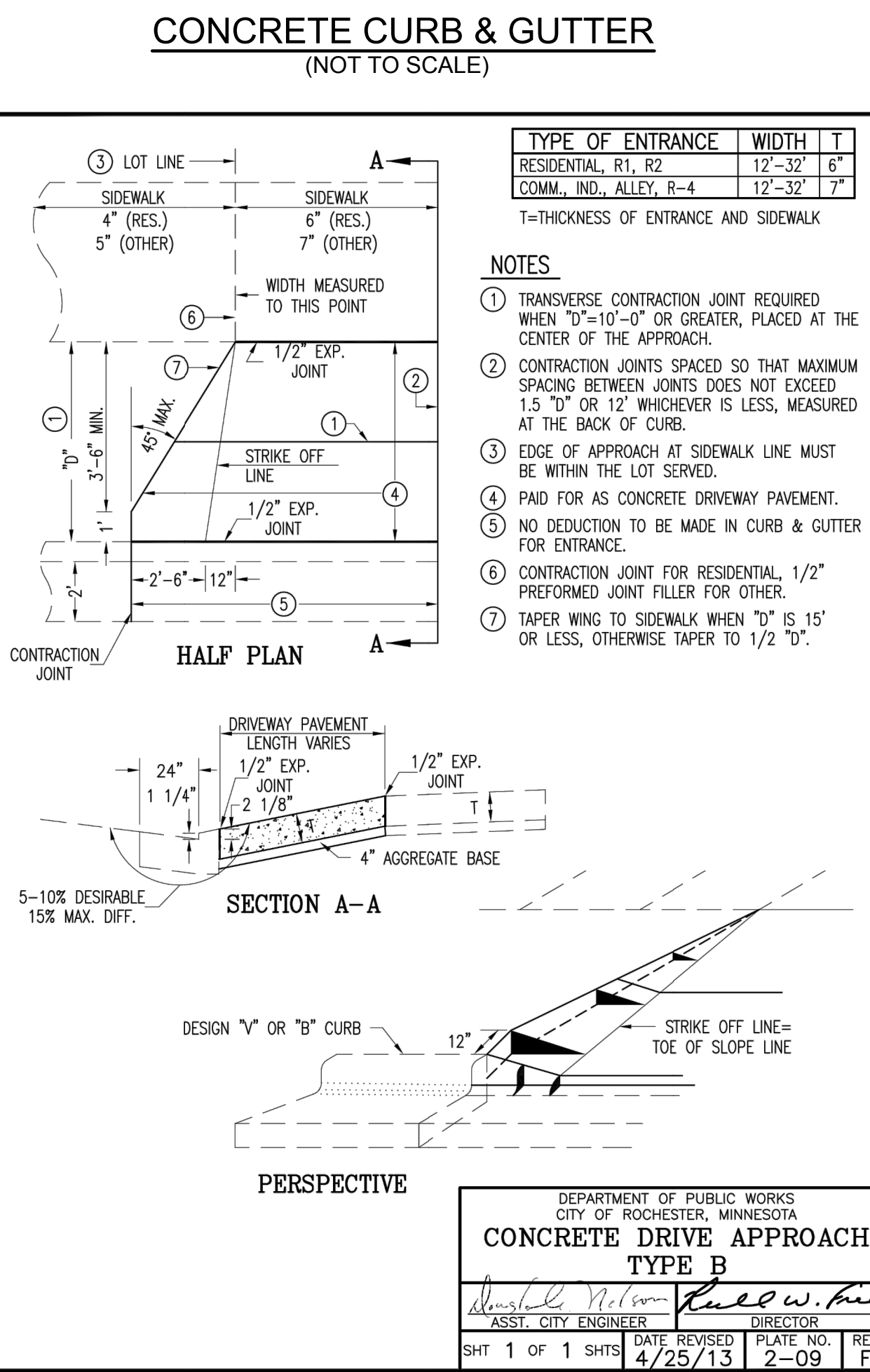
MISCELLANEOUS

- WHERE SEDIMENT DEPOSITS OFF-SITE OR IN A DITCH OR STREAM CHANNEL IN ANY LOCATION, THE MATERIAL MUST BE REMOVED BY THE CONTRACTOR, AT THEIR EXPENSE, WITHIN 2 DAYS.
- ALL TRAFFIC CONTROL DEVICES SHALL CONFORM TO THE MOST RECENT EDITION OF THE MINNESOTA MANUAL ON UNIFORM TRAFFIC CONTROL DEVICES, INCLUDING THE FIELD MANUAL FOR TEMPORARY TRAFFIC CONTROL ZONE LAYOUTS. THE CONTRACTOR IS RESPONSIBLE FOR PROTECTING ANY WORK AREAS NEAR TRAFFIC IN ACCORDANCE WITH THE MUTCD.
- THE CONTRACTOR IS HEREBY REMINDED OF THEIR RESPONSIBILITY UNDER STATE LAW TO CONTACT ALL UTILITIES THAT MAY HAVE FACILITIES IN THE AREA. CONTACT MUST BE MADE THROUGH GOPHER STATE ONE-CALL.
- WHenever the word "INCIDENTAL" is used in this plan, it shall mean this work will be incidental for which no direct compensation will be made.
- THE CONTRACTOR SHALL CONDUCT AND PHASE THEIR WORK IN A MANNER THAT'S ACCEPTABLE TO THE OWNER. THE CONTRACTOR SHALL MAINTAIN ACCESS THROUGH THE WORK ZONE FOR SCHOOL USERS.

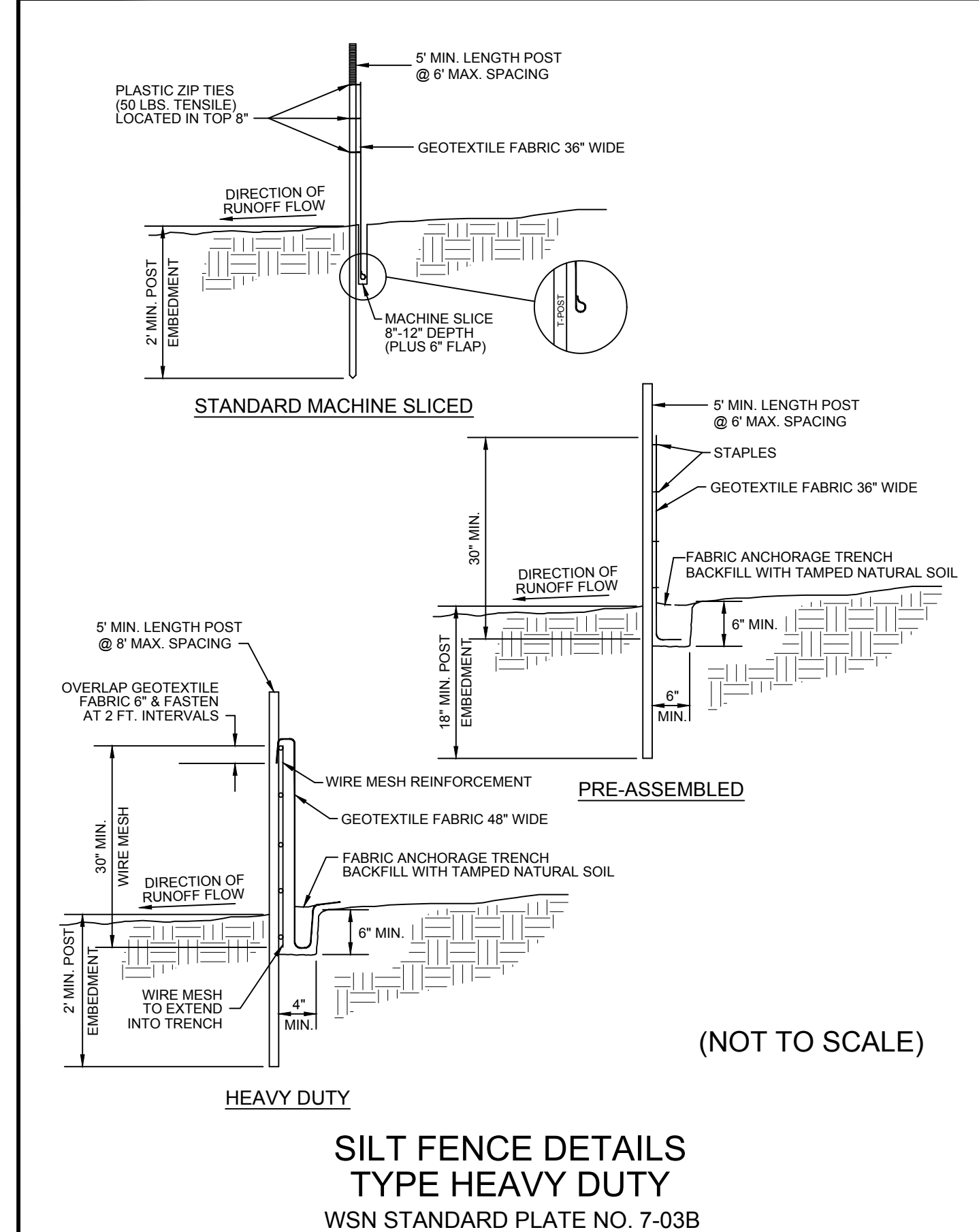


NOTES

- CONCRETE MIX: MANUAL PLACEMENT - MN/DOT SPEC. 3F52. SLIP-FORM PLACEMENT - MN/DOT SPEC. 3F32.
- PROVIDE 1/2" EXPANSION JOINT AT 300' MAXIMUM SPACING AND TO MATCH PAVEMENT EXPANSION JOINTS IN ADDITION TO EXPANSION JOINTS SHOWN ON OTHER DETAIL PLATES.
- PROVIDE CONTRACTION JOINTS @ 9' MAXIMUM SPACING, SAW CUT 2" MINIMUM DEPTH.
- ALL CONCRETE CURB & GUTTER SHALL BE PLACED ON A MINIMUM OF A 4" AGGREGATE BASE.
- SILL REQUIRED FOR DESIGN "V" AND "B", WHEREVER SIDEWALK ABUTS CURB. SEE S.D.P. 2-02.



CONCRETE DRIVE APPROACH TYPE B (NOT TO SCALE)



SILT FENCE DETAILS TYPE HEAVY DUTY WSN STANDARD PLATE NO. 7-03B

THE FOLLOWING MN/DOT STANDARD PLATES & PLANS, APPROVED BY THE FEDERAL HIGHWAY ADMINISTRATION, SHALL APPLY ON THIS PROJECT.

STANDARD PLATES	
7100H	CONCRETE CURB & GUTTER (DESIGN B AND DESIGN V)

STANDARD PLANS	
5-297.250	PEDESTRIAN CURB RAMP DETAILS (SHEETS 1 THRU 6)

WIDSETH SMITH NOLTING
Engineering | Architecture | Surveying | Environmental

HEREBY CERTIFY THAT THIS PLAN, SPECIFICATION OR REPORT WAS PREPARED BY ME OR UNDER MY CLOSE PERSONAL SUPERVISION AND THAT I AM A FULLY LICENSED PROFESSIONAL ENGINEER UNDER THE LAWS OF THE STATE OF MINNESOTA.

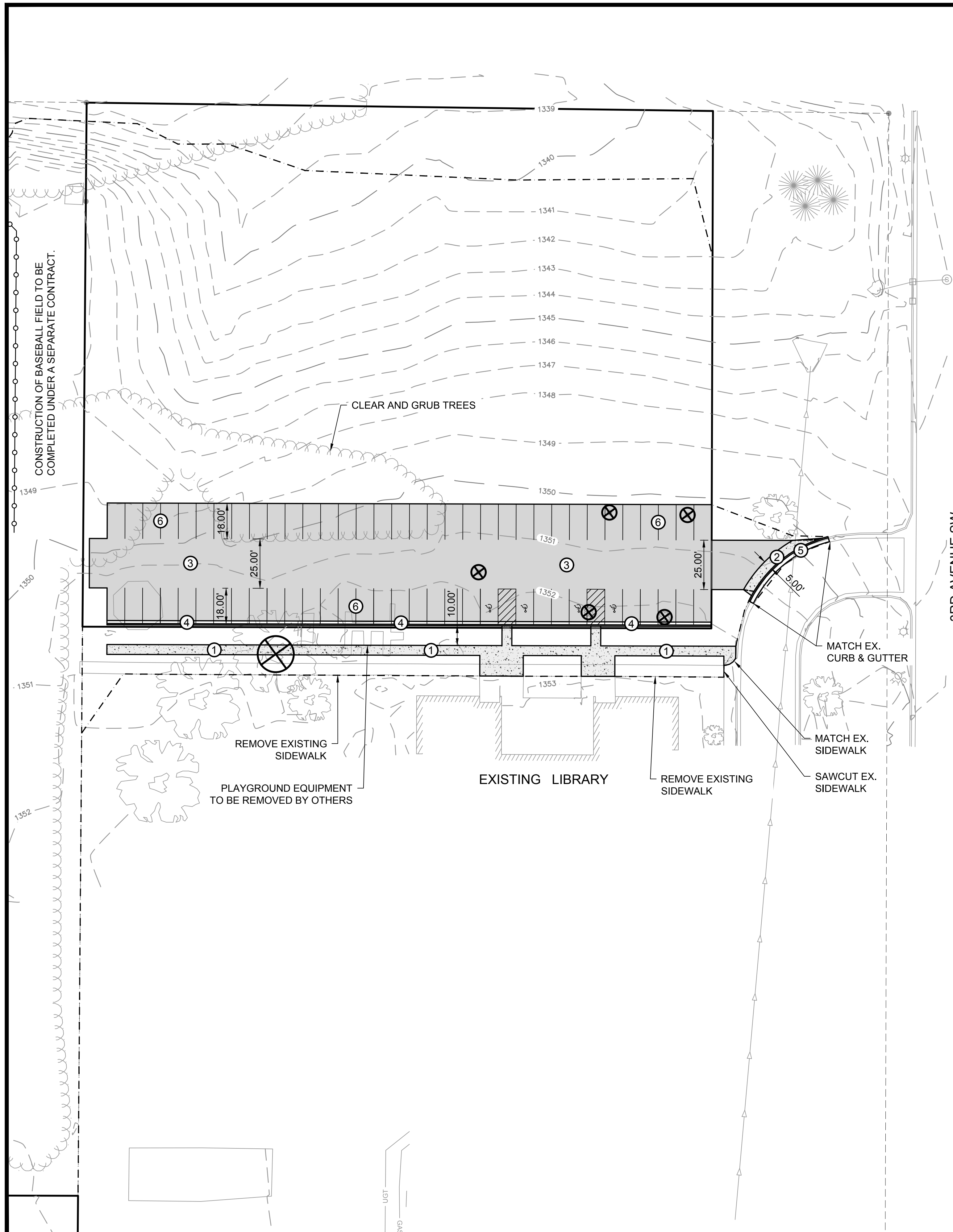
CRAIG N. BRITTON DATE: 05/29/2018 LIC. NO. 44228

DATE	SCALE	AS SHOWN	REVISIONS DESCRIPTION	BY
MAY 2018	AS SHOWN	B.R.B.		
		C.N.B.		

DATE: MAY 2018
SCALE: AS SHOWN
DRAWN BY: B.R.B.
CHECKED BY: C.N.B.
JOB NUMBER: 1070R0117.000

FCHS PARKING LOT
FILLMORE CENTRAL SCHOOL DISTRICT
HARMONY, MN
CONSTRUCTION NOTES & DETAILS - PARKING LOT

SHEET NO. **2**



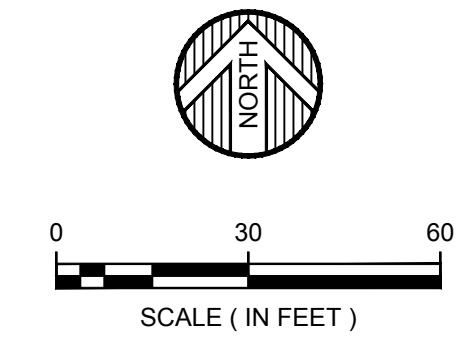
ITEM NOTES:

1. ALL SAW CUTTING THAT IS REQUIRED FOR THE REMOVAL OF CONCRETE CURB AND GUTTER, CONCRETE SIDEWALK, CONCRETE DRIVEWAYS AND BITUMINOUS PAVEMENT SHALL BE CONSIDERED INCIDENTAL.
2. ALL COMMON EXCAVATION SHALL BECOME THE PROPERTY OF THE CONTRACTOR AND DOES NOT INCLUDE THE EXISTING BITUMINOUS AND/OR EXISTING CONCRETE SIDEWALK VOLUMES. NO DIRECT COMPENSATION SHALL BE MADE FOR STRIPPING, STOCKPILING AND RE-SPREADING OF EXISTING TOPSOIL.
3. AGGREGATE BASE REQUIRED BENEATH SIDEWALKS AND IN PARKING LOTS AND DRIVEWAYS.

SIEVE SIZE	% PASSING
1"	100
3/4"	90-100
3/8"	50-90
NO. 4	35-80
NO. 40	10-35
NO. 200	5-12

THE PORTION OF THE #200 SIEVE OF THE CARBONATE AGGREGATE INSOLUBLE RESIDUE SHALL NOT EXCEED 12 PERCENT.

4. REINFORCEMENT BARS FURNISHED AND INSTALLED AT CURB & GUTTER REPAIRS (MnDOT SA-CG) AND SIDEWALK CONNECTIONS (MnDOT SA-SW) SHALL BE CONSIDERED INCIDENTAL TO THOSE ITEMS BID.
5. CONNECT TO EXISTING CURB & GUTTER PER MnDOT SA-CG (CURB AND GUTTER REPAIR). CONNECT TO EXISTING SIDEWALK PER MnDOT SA-SW (SIDEWALK OR MEDIAN REPAIR). DRILL AND HAMMER REINFORCEMENT BARS SHALL BE CONSIDERED INCIDENTAL TO OTHER ITEMS BID.
6. THE PARKING LOT SURFACE SHALL BE CLEANED AT THE DIRECTION OF THE ENGINEER IMMEDIATELY PRIOR TO APPLICATION OF THE STRIPING ITEMS.



	DENOTES EXISTING SANITARY SEWER
	DENOTES EXISTING STORM SEWER
	DENOTES CONSTRUCTION LIMITS
	DENOTES PROPOSED PROPERTY LINE
	DENOTES EXISTING PROPERTY LINE
	DENOTES CLEAR AND GRUB TREE OR SHRUB
	DENOTES SAW CUTTING (FULL DEPTH)
	DENOTES PROPOSED CONCRETE PAVING
	DENOTES PROPOSED PARKING LOT

KEYED NOTES:

- ① CONCRETE SIDEWALK - 4" THICKNESS (2.0% MAX CROSS SLOPE)
- ② CONCRETE DRIVEWAY PAVEMENT - 7" THICKNESS
- ③ PARKING LOT - SEE TYPICAL SECTIONS
- ④ B618 CONCRETE CURB AND GUTTER (REJECT)
- ⑤ B624 CONCRETE CURB AND GUTTER
- ⑥ 4" SOLID LINE WHITE - PAINT (ALTERNATE 1)

OWNER: I.S.D. 2198
 PO BOX 50
 PRESTON, MN 55965
 CONTACT: RICHARD KEITH
 PH: (507) 765-3809

CIVIL ENGINEER: WIDETH SMITH NOLTING
 3777 40TH AVENUE NW SUITE 200
 ROCHESTER, MN 55901
 CONTACT: CRAIG BRITTON
 PH: (507) 292-8743



ALL UNDERGROUND AND OVERHEAD UTILITY LOCATIONS SHOWN ARE APPROXIMATE. THERE MAY BE ADDITIONAL UNDERGROUND AND OVERHEAD UTILITIES NOT SHOWN ON THE PLAN THAT MAY BE REQUIRED TO BE REMOVED. IT IS THE CONTRACTORS RESPONSIBILITY TO REQUEST A GOPHER STATE ONE CALL PRIOR TO THE START OF ANY CONSTRUCTION.

WIDETH SMITH NOLTING
 Engineering | Architecture | Surveying | Environmental

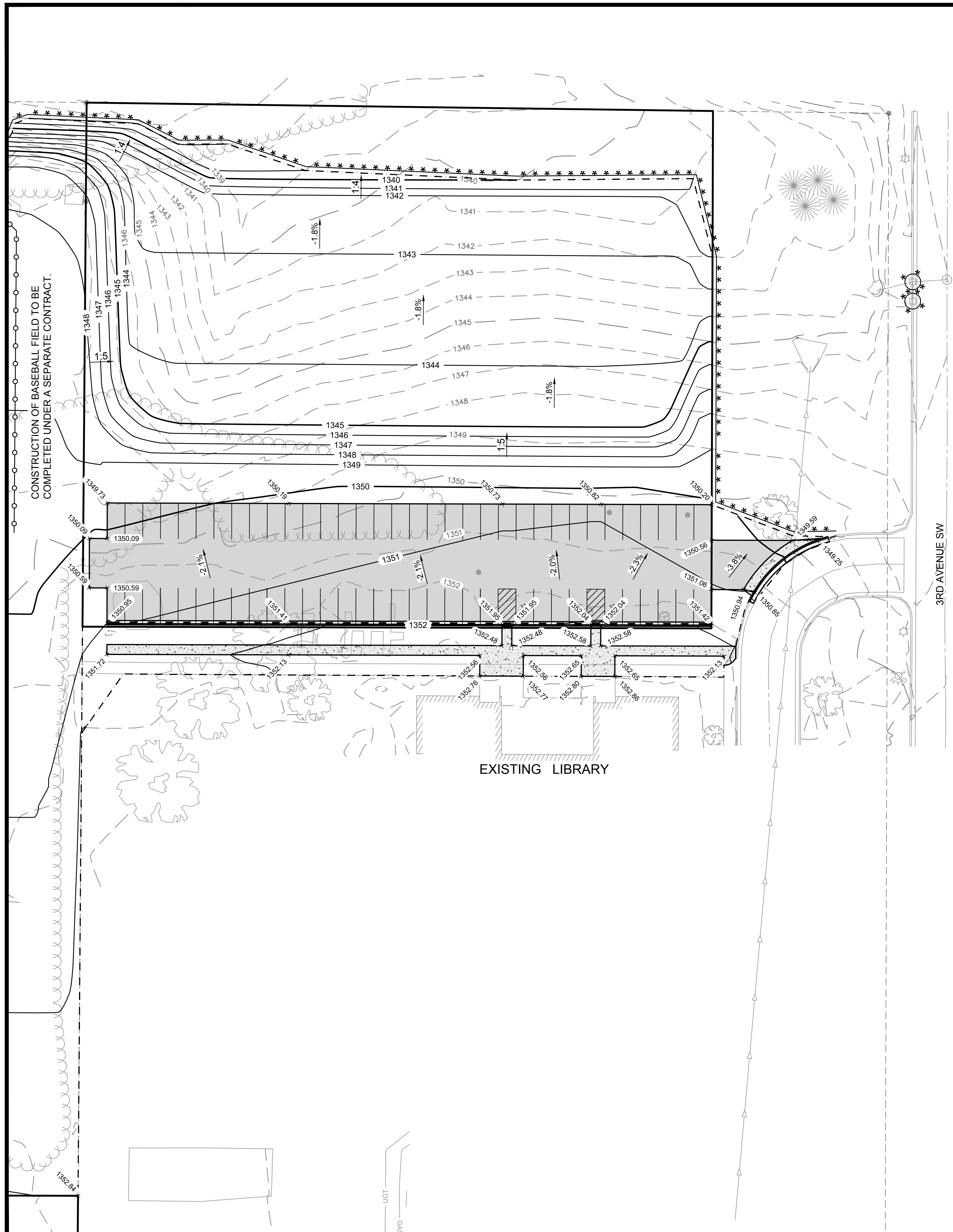
I HEREBY CERTIFY THAT THIS PLAN, SPECIFICATION OR REPORT WAS PREPARED BY ME OR UNDER MY CLOSE PERSONAL SUPERVISION AND THAT I AM A DULY LICENSED PROFESSIONAL ENGINEER UNDER THE LAWS OF THE STATE OF MINNESOTA.

Craig Britton
 CRAIG N. BRITTON DATE: 05/29/2018 LIC. NO. 44228

DATE	REVISIONS DESCRIPTION	BY
MAY 2018	AS SHOWN	
	DRAWN BY	
	CHECKED BY	
	JOB NUMBER: 1070R0117.000	

FCHS PARKING LOT
 FILLMORE CENTRAL SCHOOL DISTRICT
 HARMONY, MN
SITE PLAN - PARKING LOT

SHEET NO.
3



SWPPP, GRADING, & GENERAL NOTES:

1. AN NPDES PERMIT SHALL BE APPLIED FOR BY THE OWNER AND CONTRACTOR IF DISTURBED AREA EXCEEDS 1 ACRE. AN NPDES PERMIT WILL BE REQUIRED FOR THIS PROJECT.
2. ALL EROSION CONTROL AND SILTATION CONTROL SHALL COMPLY WITH THE SITE'S SWPPP AND THE MINNESOTA POLLUTION CONTROL AGENCY (MPCA) WATER QUALITY IN URBAN AREAS MANUAL AND THE REGULATIONS OF THE CITY OF HARMONY AND FILLMORE COUNTY.
3. SEDIMENT CONTROL BEST MANAGEMENT PRACTICES (BMP'S), WHICH PREVENT SEDIMENT FROM ENTERING A WATER OF THE STATE, SHALL BE ESTABLISHED BEFORE LAND DISTURBING OPERATIONS BEGIN AND SHALL REMAIN IN PLACE UNTIL FINAL STABILIZATION HAS BEEN ESTABLISHED.
SILT FENCE - MnDOT STANDARD PLAN
INLET PROTECTION - MnDOT STANDARD PLAN
TEMPORARY ROCK CONSTRUCTION ENTRANCE - MnDOT STANDARD PLAN
4. TEMPORARY STABILIZATION - TOPSOIL STOCK PILES AND DISTURBED SOIL AREAS OF THE SITE WHERE CONSTRUCTION ACTIVITY TEMPORARILY CEASES FOR AT LEAST 7 DAYS WILL BE STABILIZED WITH TEMPORARY SEEDING AND MULCH NO LATER THAN 7 DAYS FROM THE LAST CONSTRUCTION ACTIVITY IN THAT AREA. THE TEMPORARY SEED SHALL BE RYE (GRAIN) APPLIED AT THE RATE OF 100 LBS PER ACRE. AFTER SEEDING, EACH AREA SHALL BE MULCHED WITH TWO (2) TONS PER ACRE OF STRAW. THE STRAW MULCH IS TO BE TACKED INTO PLACE BY A DISK WITH THE BLADES SET NEARLY STRAIGHT.
5. ALL DISTURBED PERVIOUS AREAS SHALL BE SEEDED (MnDOT 25-151) UNLESS OTHERWISE NOTED OR SHOWN IN PLANS. THE CONTRACTOR SHALL USE METHOD 3 (BROADCAST SEEDING) AND SHALL TAKE MEASURES TO ENSURE GOOD SEED TO SOIL CONTACT BY RAKING OR OTHER APPROVED METHOD. MnDOT MULCH TYPE I SHALL BE USED ON ALL SEEDED AREAS. ALL SEEDING AND MULCHING PROCEDURES SHALL CONFORM TO THE MnDOT SEEDING MANUAL, 2014 EDITION.
6. THE NORMAL WETTED PERIMETER OF ANY TEMPORARY OR PERMANENT DRAINAGE DITCH OR SWALE THAT DRAINS WATER FROM ANY PORTION OF THE CONSTRUCTION SITE, OR DIVERTS WATER AROUND THE SITE, MUST BE STABILIZED WITHIN 200 LINEAL FEET FROM THE PROPERTY EDGE, OR FROM THE POINT OF DISCHARGE INTO ANY SURFACE WATER WITHIN 24 HOURS AFTER CONNECTING TO A SURFACE WATER.
7. IT IS THE RESPONSIBILITY OF THE CONTRACTOR TO ENSURE THAT SEDIMENT DOES NOT LEAVE THIS SITE. IT IS REQUIRED THAT THE CONTRACTOR INSTALL A STABILIZED VEHICLE EXIT TO KEEP SEDIMENT TRACKING TO A MINIMUM. THE CONTRACTOR SHALL ASSUME COMPLETE RESPONSIBILITY UNTIL ACCEPTANCE OF THE WORK BY THE OWNERS.
8. ANY DEPOSITING OF SEDIMENT OR DEBRIS ON NEW OR EXISTING PAVEMENT, OR IN EXISTING STORM SEWERS SHALL BE REMOVED AFTER EACH RAIN AND AFFECTED AREAS CLEANED. ANY TRACKING OF SEDIMENT OR DEBRIS FROM CONSTRUCTION TRAFFIC ONTO PUBLIC RIGHT OF WAY SHALL BE REMOVED BY THE END OF EACH WORK DAY AND AFFECTED AREAS CLEANED.
9. THE CONTRACTOR SHALL INSPECT THE CONSTRUCTION SITE ONCE EVERY SEVEN DAYS AND WITHIN 24 HOURS AFTER RAIN EVENTS FOR DAMAGE TO EROSION CONTROL DEVICES. IF DAMAGED OR INEFFECTIVE EROSION CONTROL DEVICES ARE DISCOVERED, THEY SHALL BE REPAIRED OR REPLACED. THE CONTRACTOR SHALL MAINTAIN INSPECTION RECORDS, WHICH INCLUDE DATE AND TIME OF INSPECTIONS, DATES OF RAINFALL EVENTS, FINDINGS OF INSPECTIONS, CORRECTIVE ACTIONS TAKEN (INCLUDING DATES AND TIMES), AND DOCUMENTATION OF ANY CHANGES TO THE TEMPORARY OR PERMANENT EROSION CONTROL PLANS MADE DURING CONSTRUCTION.
10. THE CONTRACTOR IS RESPONSIBLE FOR ALL SITE CLEARING, GRUBBING AND REMOVALS WHICH WILL INCLUDE THE FOLLOWING: BITUMINOUS PAVEMENT, CONCRETE CURB AND GUTTER, CONCRETE SIDEWALK AND COMMON EXCAVATION. THE CONTRACTOR SHALL COORDINATE UTILITY WORK WITH THE LOCAL UTILITY COMPANIES.
 REMOVAL OF PAVEMENT AND MISCELLANEOUS STRUCTURES SHALL BE PERFORMED IN ACCORDANCE WITH THE PROVISIONS OF MN/DOT 2104 AND THE FOLLOWING:
11. ALL PROPOSED ELEVATIONS ARE TO TOP OF PAVING, GUTTER FLOWLINE OR FINISHED GRADE, UNLESS NOTED OTHERWISE. PROPOSED ELEVATIONS ARE INTENDED TO PROVIDE POSITIVE DRAINAGE TOWARDS CATCH BASINS AND/OR OUTLETS. THE CONTRACTOR SHALL BE RESPONSIBLE TO PROVIDE THE REQUIRED ELEVATIONS, WHICH WILL PROMOTE POSITIVE DRAINAGE THROUGHOUT THE PROJECT SITE.
12. THE SITE HAS NOT NECESSARILY BEEN DESIGNED TO BALANCE THE ON-SITE MATERIALS. THE CONTRACTOR IS RESPONSIBLE FOR DETERMINING THE EARTHWORK QUANTITY ON THIS SITE. ANY EXCESS MATERIAL DISPOSED OF ON-SITE SHALL BE AT THE APPROVAL OF THE ENGINEER. EXCESS MATERIAL THAT IS UNABLE TO BE DISPOSED OF ON-SITE SHALL BE REMOVED AND DISPOSED OF AT AN OFF-SITE LOCATION BY THE CONTRACTOR. THE CONTRACTOR SHALL IMPORT SUITABLE MATERIAL AS NEEDED.
13. THE CONTRACTOR SHALL NOTIFY ALL APPROPRIATE CITY DEPARTMENTS AND UTILITY COMPANIES 72 HOURS PRIOR TO CONSTRUCTION. ALL NECESSARY PRECAUTIONS SHALL BE TAKEN TO AVOID DAMAGE TO EXISTING UTILITIES.
14. IT SHALL BE THE CONTRACTOR'S RESPONSIBILITY TO VERIFY THE LOCATION AND ELEVATION OF ALL UTILITIES PRIOR TO THE BEGINNING OF CONSTRUCTION.
15. SAFETY NOTICE TO CONTRACTORS: IN ACCORDANCE WITH GENERALLY ACCEPTED CONSTRUCTION PRACTICES, THE CONTRACTOR WILL BE SOLELY AND COMPLETELY RESPONSIBLE FOR CONDITIONS ON THE JOB SITE, INCLUDING SAFETY OF ALL PERSONS AND PROPERTY DURING PERFORMANCE OF THE WORK. THIS REQUIREMENT WILL APPLY CONTINUOUSLY AND NOT BE LIMITED TO NORMAL WORKING HOURS. THE DUTY OF THE ENGINEER OR THE DEVELOPER TO CONDUCT CONSTRUCTION REVIEW OF THE CONTRACTOR'S PERFORMANCE IS NOT INTENDED TO INCLUDE REVIEW OF THE ADEQUACY OF THE CONTRACTOR'S SAFETY MEASURES IN, ON OR NEAR THE CONSTRUCTION SITE.
16. THE CONTRACTOR TO MAINTAIN 2.0% MAX. CROSS SLOPE ON ALL SIDEWALK. SIDEWALK THROUGH DRIVEWAYS SHALL ALSO MAINTAIN A MAX 2.0% CROSS SLOPE.

	DENOTES EXISTING STORM SEWER
	DENOTES PROPOSED PROPERTY LINE
	DENOTES EXISTING PROPERTY LINE
	DENOTES PROPOSED SILT FENCE
	DENOTES CONSTRUCTION LIMITS
	DENOTES PROPOSED INLET PROTECTION
	DENOTES PROPOSED CONCRETE PAVING
	DENOTES PROPOSED PARKING LOT
	DENOTES PROPOSED CONTOUR ANNOTATION
	DENOTES PROPOSED GUTTER OR FINISH ELEVATION (UNLESS OTHERWISE NOTED)
	DENOTES PROPOSED DRAINAGE ARROW
	DENOTES REJECT CURB AND GUTTER

OWNER: I.S.D. 2198
 PO BOX 50
 PRESTON, MN 55965
 CONTACT: RICHARD KEITH
 PH: (507) 765-3809

CIVIL ENGINEER: WIDSETH SMITH NOLTING
 3777 40TH AVENUE NW SUITE 200
 ROCHESTER, MN 55901
 CONTACT: CRAIG BRITTON
 PH: (507) 292-8743



ALL UNDERGROUND AND OVERHEAD UTILITY LOCATIONS SHOWN ARE APPROXIMATE. THERE MAY BE ADDITIONAL UNDERGROUND AND OVERHEAD UTILITIES NOT SHOWN ON THE PLAN THAT MAY BE REQUIRED TO BE REMOVED. IT IS THE CONTRACTORS RESPONSIBILITY TO REQUEST A GOPHER STATE ONE CALL PRIOR TO THE START OF ANY CONSTRUCTION.

WIDSETH SMITH NOLTING
 Engineering | Architecture | Surveying | Environmental

HEREBY CERTIFY THAT THIS PLAN, SPECIFICATION OR REPORT WAS PREPARED BY ME OR UNDER MY CLOSE PERSONAL SUPERVISION AND THAT I AM A DULY LICENSED PROFESSIONAL ENGINEER UNDER THE LAWS OF THE STATE OF MINNESOTA.

CRAIG N. BRITTON DATE: 05/29/2018 LIC. NO. 44228

DATE	SCALE	AS SHOWN	BY	REVISIONS DESCRIPTION
MAY 2018				

DATE: MAY 2018
 SCALE: AS SHOWN
 DRAWN BY: B.R.B.
 CHECKED BY: C.N.B.
 JOB NUMBER: 1070R0117.000

FCHS PARKING LOT
 FILLMORE CENTRAL SCHOOL DISTRICT
 HARMONY, MN
 GRADING PLAN - PARKING LOT

SHEET NO. **4**

CONSTRUCTION PLANS FOR FILLMORE CENTRAL BASEBALL FIELD

HARMONY, MINNESOTA

LEGEND

EXISTING FEATURES

◆ BENCH MARK	⊕ ELEC POLE
● FOUND PIPE	▨ ELEC TRANSFORMER BOX
○ STAKED PIPE	⊕ GAS METER
⊠ AC UNIT	⊕ GAS VALVE
⊙ FENCE POST	⊠ TELE PEDESTAL
▲ FLAG POLE	— — — — — CENTER LINE
○ GUARD POST	⌒ EDGE OF WOODS
Y GUY ANCHOR	—○—○—○—○— FENCE CHAIN LINK
○ SHRUB	— OHE — OVERHEAD ELECTRIC
⊕ SIGN SINGLE POST	— > — SANITARY SEWER
☀ TREE CONIFER	— SS — SS — SANITARY SEWER SERVICE
🌳 TREE DECIDUOUS	— ▷ — STORM SEWER
⊗ SANITARY CLEANOUT	— UGC — UNDERGROUND CABLE TV
⊙ SANITARY MANHOLE	— UGE — UNDERGROUND ELECTRIC
□ STORM CATCH BASIN	— FOC — UNDERGROUND FIBER OPTIC
⊙ STORM INLET	— GAS — UNDERGROUND GAS
⊙ STORM MANHOLE	— UGT — UNDERGROUND TELE
⊕ WATER CURB STOP	— — WATERMAIN
⊕ WATER HYDRANT	— WS — WS — WATERMAIN SERVICE
⊕ WATER METER	— — — — — RIGHT OF WAY EXISTING
⊕ WATER VALVE	⊠ RANDOM RIPRAP
⊕ ELEC LIGHT POLE	▨ BUILDING WALL HATCH
⊕ ELEC METER	⊠ CONCRETE SURFACE
⊕ ELEC PEDESTAL	⊠ GRAVEL SURFACE

PROPOSED FEATURES

▲ APRON PROPOSED	— > — SANITARY SEWER PROPOSED
● ^{CO} SANITARY CLEANOUT	— SS — SS — SANITARY SERVICE PROPOSED
● SANITARY MANHOLE	— ▷ — STORM SEWER PROPOSED
■ STORM CATCH BASIN	— — WATERMAIN PROPOSED
● STORM MANHOLE	— WS — WS — WATERMAIN SERVICE PROPOSED
⊕ WATER CURB STOP	***** SILT FENCE
⊕ WATER HYDRANT	▨ EROSION CONTROL BLANKET
⊕ WATER VALVE PROPOSED	



INDEX	
SHEET	DESCRIPTION
1	TITLE SHEET
2	CONSTRUCTION NOTES & DETAILS
3	SITE PLAN
4	GRADING PLAN

OWNER: I.S.D. 2198
PO BOX 50
PRESTON, MN 55965
CONTACT: RICHARD KEITH
PH: (507) 765-3809

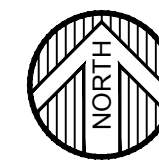
CIVIL ENGINEER: WIDSETH SMITH NOLTING
3777 40TH AVENUE NW SUITE 200
ROCHESTER, MN 55901
CONTACT: CRAIG BRITTON
PH: (507) 292-8743

GOVERNING SPECIFICATIONS

THE 2018 EDITION OF THE MINNESOTA DEPARTMENT OF TRANSPORTATION "STANDARD SPECIFICATIONS FOR CONSTRUCTION" SHALL GOVERN.

THE SUBSURFACE UTILITY INFORMATION IN THIS PLAN IS UTILITY QUALITY LEVEL D. THIS QUALITY LEVEL WAS DETERMINED ACCORDING TO THE GUIDELINES OF C/ASCE 38-02, ENTITLED "STANDARD GUIDELINES FOR THE COLLECTION AND DEPICTION OF EXISTING SUBSURFACE UTILITY DATA".

ALL UNDERGROUND AND OVERHEAD UTILITY LOCATIONS SHOWN ARE APPROXIMATE. THERE MAY BE ADDITIONAL UNDERGROUND AND OVERHEAD UTILITIES NOT SHOWN ON THE PLAN. IT IS THE CONTRACTORS RESPONSIBILITY TO REQUEST A GOPHER STATE ONE CALL PRIOR TO THE START OF ANY CONSTRUCTION.



I HEREBY CERTIFY THAT THIS PLAN, SPECIFICATION OR REPORT THAT I AM A DULY LICENSED PROFESSIONAL ENGINEER UNDER THE LAWS OF THE STATE OF MINNESOTA.
Craig Britton
CRAIG N. BRITTON DATE: 05/29/2018 LIC. NO. 44228

DATE	REVISION DESCRIPTION	REVISION NUMBER

DATE	SCALE	AS SHOWN	DATE	SCALE	AS SHOWN
MAY 2018	AS SHOWN				

FCHS BASEBALL FIELD
FILLMORE CENTRAL SCHOOL DISTRICT
HARMONY, MN
JOB NUMBER: 1070R0117.000
TITLE SHEET - BALL FIELD

CONSTRUCTION/SOIL NOTES

GRADING, BASE AND SURFACE

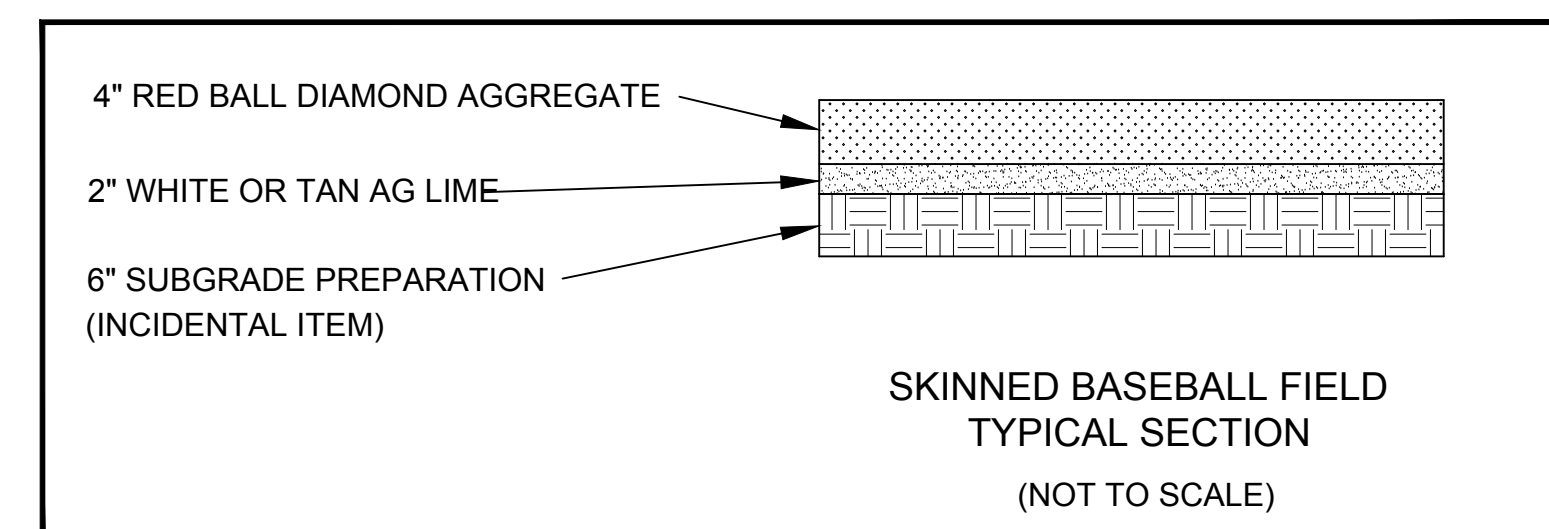
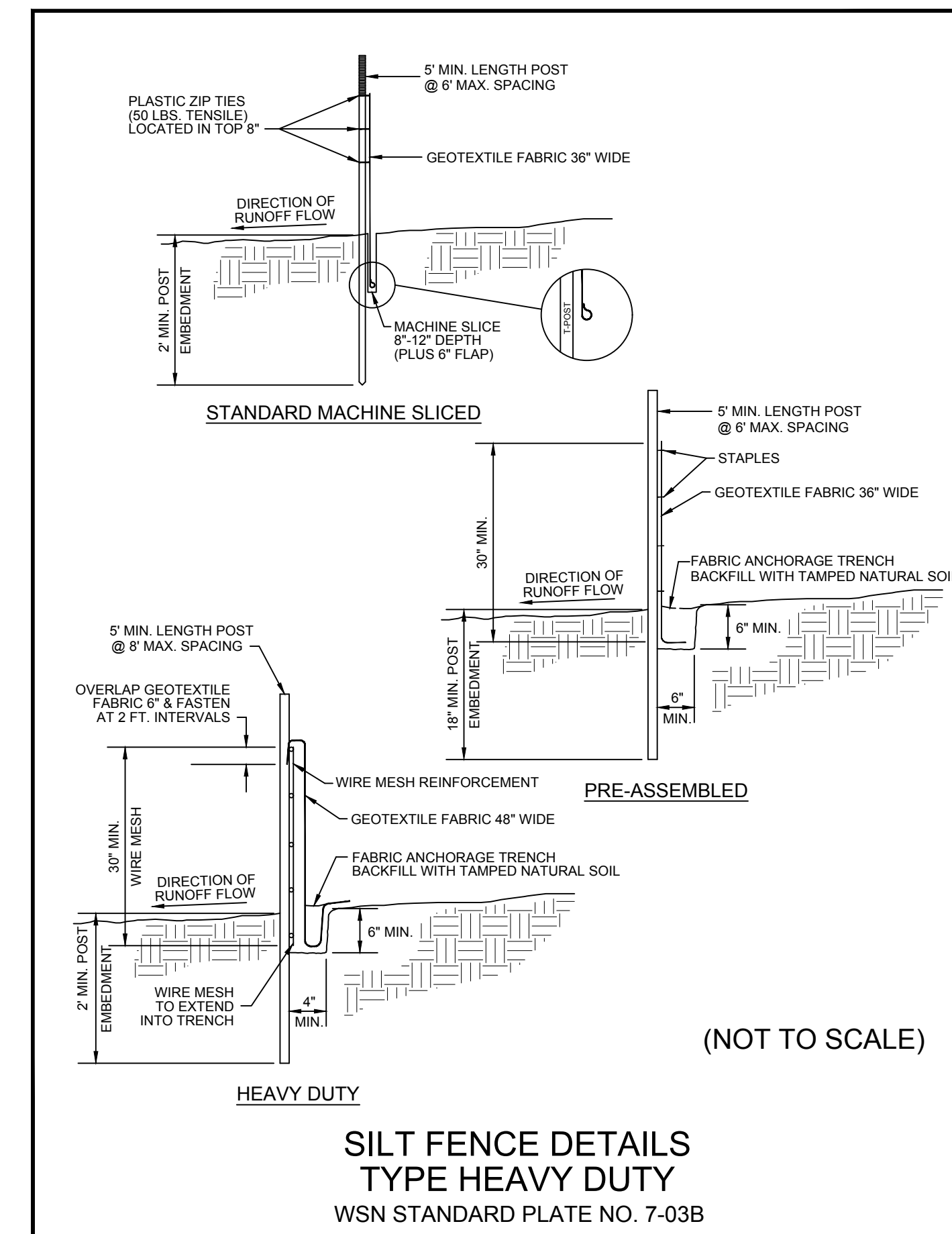
- TOP OF THE GRADING SUBSTRATE (GRADING GRADE) IS DEFINED AS THE BOTTOM OF THE CLASS 5 AGGREGATE BASE.
- UNSUITABLE MATERIALS ARE TOPSOILS, DEBRIS, PEAT, MUCK AND ORGANIC OR OTHER UNSTABLE SOILS.
- STRIP SOD AND TOPSOIL FROM AREAS TO BE DISTURBED BY CONSTRUCTION AND REUSE AS SLOPE DRESSING.
- ALL TOPSOIL STRIPPING SHALL BE CONSIDERED INCIDENTAL TO COMMON EXCAVATION QUANTITIES.
- THE ORGANIC PORTIONS OF THE SURFICIAL DEPOSITS SHOULD BE REMOVED WITH A MINIMUM 1' DEEP SUBCUT IN THE PROPOSED PARKING LOT AREAS PRIOR TO CONSTRUCTION OF THE PAVEMENT SECTION. BACKFILL WITH CLASS 5 AGGREGATE BASE MODIFIED. ANY UNCONTAMINATED COMMON EMBANKMENT MATERIAL REMOVED FROM THE EXISTING SUBGRADE AREA MAY BE USED IN OTHER AREAS DESIGNATED FOR COMMON EMBANKMENT MATERIAL.
- EXCESS TOPSOIL AND MUCK MATERIAL SHALL BE USED THROUGHOUT THE PROJECT AND AS DIRECTED BY THE ENGINEER.
- OBTAIN COMPACTION ON THE GRADING PORTIONS OF PERMANENT CONSTRUCTION IN ACCORDANCE WITH THE "QUALITY COMPACTION METHOD" REQUIREMENTS.
- COMPACTION OF THE AGGREGATE BASE LAYER SHALL BE OBTAINED IN ACCORDANCE WITH THE "QUALITY COMPACTION METHOD". COMPACTION SHALL BE PERFORMED IN ACCORDANCE WITH SECTION D.2 OF THE (2211) AGGREGATE BASE SPECIFICATION, INCLUDED IN THE MnDOT STANDARD SPECIFICATION FOR CONSTRUCTION.
- THE BOTTOM OF ALL SUBCUTS SHALL BE SHAPED AND COMPACTED BY THE "QUALITY COMPACTION METHOD". THE CONTRACTOR SHALL USE A MINIMUM OF 4 PASSES OF AN APPROVED COMPACTION DEVICE.
- WHERE CONNECTING TO THE INPLACE ROADWAYS AT THE TERMINI OF PROPOSED CONSTRUCTION, CUT VERTICALLY TO THE BOTTOM OF THE INPLACE SURFACING OR TO THE BOTTOM OF THE NEW SURFACING, WHICHEVER IS DEEPER, THEN 1(V):20(H) TO THE BOTTOM OF THE RECOMMENDED SUBGRADE EXCAVATION, UNLESS OTHERWISE NOTED.
- PROVIDE 1(V):20(H) LONGITUDINAL TAPERS BETWEEN CHANGES IN SUBGRADE AND SUBCUT DEPTHS.
- DITCH BOTTOMS, TOE OF FILL, CUT RUNOUTS AND THE TOP EDGE OF THE BACKSLOPES SHALL BE ROUNDED REGARDLESS OF THE SECTION USED ON THE CROSS SECTION SHEETS.
- PROVIDE FOR A UNIFORM BITUMINOUS TACK COAT BETWEEN ALL BITUMINOUS COURSES. ALL COSTS ASSOCIATED WITH THE FURNISHING AND PLACEMENT OF THE TACK COAT SHALL BE CONSIDERED INCIDENTAL TO OTHER ITEMS BID. THE TACK COAT SHALL BE IN ACCORDANCE WITH MN/DOT SPECIFICATION 2357.
- AGGREGATE BASE CLASS 5 MODIFIED SHALL BE INCORPORATED INTO THE SUBGRADE AS STABILIZING AGGREGATE TO ACHIEVE SATISFACTORY SURFACE STABILITY AT LOCATIONS DEEMED NECESSARY BY THE ENGINEER. GRANULAR MATERIAL WHICH IS FURNISHED BY THE CONTRACTOR SHALL BE STABILIZED, IF NECESSARY, AT THE CONTRACTOR'S EXPENSE. WHERE STABILIZING AGGREGATE IS DEEMED NECESSARY, IT SHALL BE PLACED AT A RATE OF APPROXIMATELY 200 LBS/SY. AGGREGATE BASE CLASS 5 MODIFIED MATERIAL USED AS STABILIZING AGGREGATE SHALL BE PAID FOR BY THE TON AS AGGREGATE BASE CLASS 5 MODIFIED.
- PROVIDE A SAWCUT WHERE PLACING NEW PAVEMENT ADJACENT TO INPLACE PAVEMENT TO ENSURE A UNIFORM JOINT.
- ALL PEDESTRIAN RAMPS SHALL MEET THE PUBLIC RIGHT-OF-WAY ACCESSIBILITY GUIDELINES (PROWAG), TO COMPLY WITH THE AMERICANS WITH DISABILITIES ACT.
- CONNECT TO EXISTING CONCRETE CURB & GUTTER AND SIDEWALK IN ACCORDANCE WITH MnDOT STATE AID CONCRETE PAVEMENT REHABILITATION BEST PRACTICES MANUAL, REPAIR TYPE SA-CG AND SA-SW, RESPECTIVELY.

TURF ESTABLISHMENT

- PLACE A MINIMUM OF 4 INCHES OF TOPSOIL IN AREAS SCHEDULED FOR PERMANENT TURF ESTABLISHMENT.
- ALL EXPOSED SOIL AREAS MUST BE STABILIZED AS SOON AS POSSIBLE TO LIMIT SOIL EROSION BUT IN NO CASE LATER THAN FOURTEEN (14) DAYS AFTER THE CONSTRUCTION ACTIVITY IN THAT PORTION OF THE SITE HAS TEMPORARILY OR PERMANENTLY CEASED.
- PROVIDE COMMERCIAL FERTILIZER TYPE 3, OR EQUIVALENT ON ALL AREAS TO BE SEEDED (INCIDENTAL ITEM).

MISCELLANEOUS

- WHERE SEDIMENT DEPOSITS OFF-SITE OR IN A DITCH OR STREAM CHANNEL IN ANY LOCATION, THE MATERIAL MUST BE REMOVED BY THE CONTRACTOR, AT THEIR EXPENSE, WITHIN 2 DAYS.
- ALL TRAFFIC CONTROL DEVICES SHALL CONFORM TO THE MOST RECENT EDITION OF THE MINNESOTA MANUAL ON UNIFORM TRAFFIC CONTROL DEVICES, INCLUDING THE FIELD MANUAL FOR TEMPORARY TRAFFIC CONTROL ZONE LAYOUTS. THE CONTRACTOR IS RESPONSIBLE FOR PROTECTING ANY WORK AREAS NEAR TRAFFIC IN ACCORDANCE WITH THE MMUTCD.
- THE CONTRACTOR IS HEREBY REMINDED OF THEIR RESPONSIBILITY UNDER STATE LAW TO CONTACT ALL UTILITIES THAT MAY HAVE FACILITIES IN THE AREA. CONTACT MUST BE MADE THROUGH GOPHER STATE ONE-CALL.
- WHENEVER THE WORD "INCIDENTAL" IS USED IN THIS PLAN, IT SHALL MEAN THIS WORK WILL BE INCIDENTAL FOR WHICH NO DIRECT COMPENSATION WILL BE MADE.
- THE CONTRACTOR SHALL CONDUCT AND PHASE THEIR WORK IN A MANNER THAT'S ACCEPTABLE TO THE OWNER. THE CONTRACTOR SHALL MAINTAIN ACCESS THROUGH THE WORK ZONE FOR SCHOOL USERS.

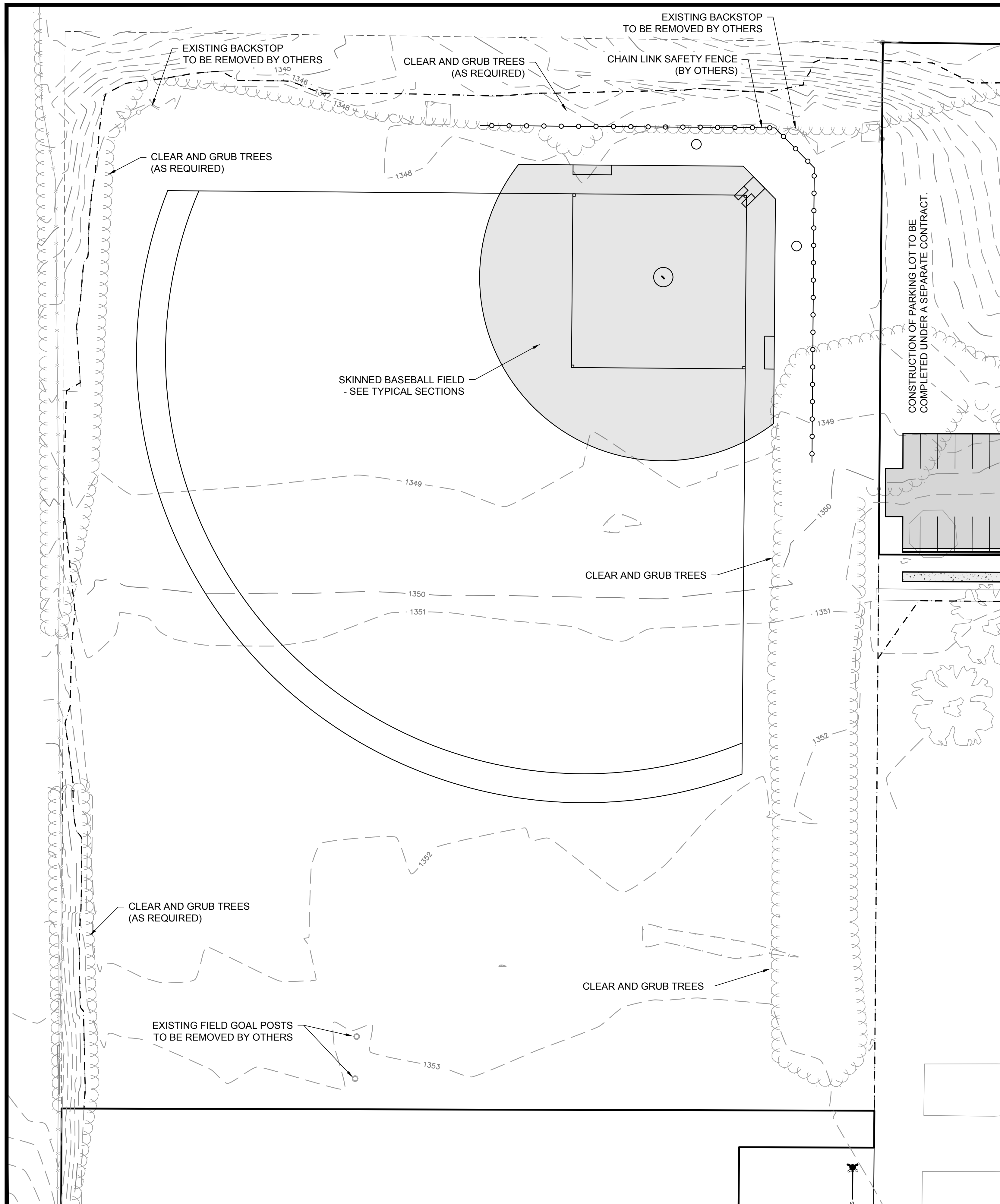


DATE: 05/29/2018 LIC. NO. 44228
CRAIG N. BRITTON
I HEREBY CERTIFY THAT THIS PLAN, SPECIFICATION OR REPORT WAS PREPARED BY ME OR UNDER MY CLOSE PERSONAL SUPERVISION AND THAT I AM A DULY LICENSED PROFESSIONAL ENGINEER UNDER THE LAWS OF THE STATE OF MINNESOTA.

DATE	REVISIONS DESCRIPTION	BY

DATE: MAY 2018
SCALE: AS SHOWN
DRAWN BY: B.R.B.
CHECKED BY: C.N.B.
JOB NUMBER: 1070R0117.000

FCHS BASEBALL FIELD
FILLMORE CENTRAL SCHOOL DISTRICT
HARMONY, MN
CONSTRUCTION NOTES & DETAILS - BALL FIELD



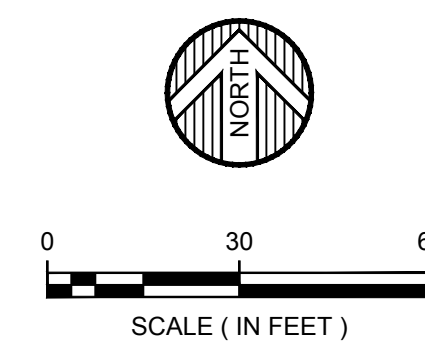
ITEM NOTES:

1. ALL SAW CUTTING THAT IS REQUIRED FOR THE REMOVAL OF CONCRETE CURB AND GUTTER, CONCRETE SIDEWALK, CONCRETE DRIVEWAYS AND BITUMINOUS PAVEMENT SHALL BE CONSIDERED INCIDENTAL.
2. ALL COMMON EXCAVATION SHALL BECOME THE PROPERTY OF THE CONTRACTOR AND DOES NOT INCLUDE THE EXISTING BITUMINOUS AND/OR EXISTING CONCRETE SIDEWALK VOLUMES. NO DIRECT COMPENSATION SHALL BE MADE FOR STRIPPING, STOCKPILING AND RE-SPREADING OF EXISTING TOPSOIL.

	DENOTES CONSTRUCTION LIMITS
	DENOTES PROPOSED PROPERTY LINE
	DENOTES EXISTING PROPERTY LINE
	DENOTES PROPOSED SKINNED BASEBALL FIELD
	DENOTES PROPOSED CONCRETE PAVING (FUTURE)
	DENOTES PROPOSED PARKING LOT (FUTURE)

OWNER: I.S.D. 2198
 PO BOX 50
 PRESTON, MN 55965
 CONTACT: RICHARD KEITH
 PH: (507) 765-3809

CIVIL ENGINEER: WIDSETH SMITH NOLTING
 3777 40TH AVENUE NW SUITE 200
 ROCHESTER, MN 55901
 CONTACT: CRAIG BRITTON
 PH: (507) 292-8743

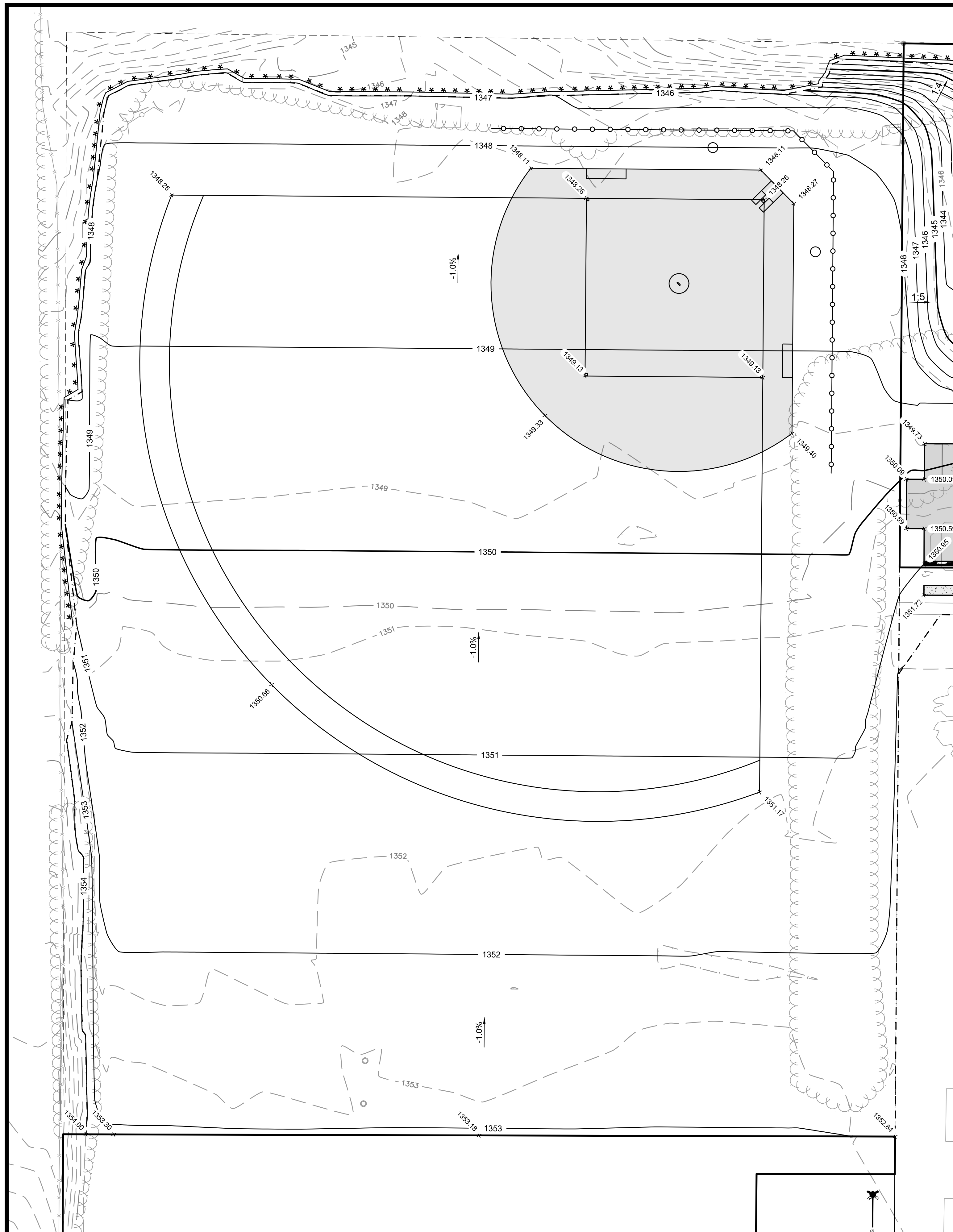


ALL UNDERGROUND AND OVERHEAD UTILITY LOCATIONS SHOWN ARE APPROXIMATE. THERE MAY BE ADDITIONAL UNDERGROUND AND OVERHEAD UTILITIES NOT SHOWN ON THE PLAN THAT MAY BE REQUIRED TO BE REMOVED. IT IS THE CONTRACTORS RESPONSIBILITY TO REQUEST A GOPHER STATE ONE CALL PRIOR TO THE START OF ANY CONSTRUCTION.

I HEREBY CERTIFY THAT THIS PLAN, SPECIFICATION OR REPORT THAT I AM A DULY LICENSED PROFESSIONAL ENGINEER UNDER THE LAWS OF THE STATE OF MINNESOTA.
 CRAIG N. BRITTON DATE: 05/29/2018 LIC. NO. 44228

DATE	REV#	DESCRIPTION

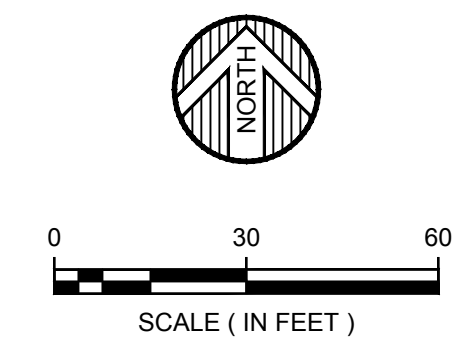
DATE: MAY 2018
 SCALE: AS SHOWN
 DRAWN BY: B.R.B.
 CHECKED BY: C.N.B.
 JOB NUMBER: 1070R0117.000



CONSTRUCTION OF PARKING LOT TO BE COMPLETED UNDER A SEPARATE CONTRACT.

SWPPP, GRADING, & GENERAL NOTES:

1. AN NPDES PERMIT SHALL BE APPLIED FOR BY THE OWNER AND CONTRACTOR IF DISTURBED AREA EXCEEDS 1 ACRE. AN NPDES PERMIT WILL BE REQUIRED FOR THIS PROJECT.
2. ALL EROSION CONTROL AND SILTATION CONTROL SHALL COMPLY WITH THE SITE'S SWPPP AND THE MINNESOTA POLLUTION CONTROL AGENCY (MPCA) WATER QUALITY IN URBAN AREAS MANUAL AND THE REGULATIONS OF THE CITY OF HARMONY AND FILLMORE COUNTY.
3. SEDIMENT CONTROL BEST MANAGEMENT PRACTICES (BMP'S), WHICH PREVENT SEDIMENT FROM ENTERING A WATER OF THE STATE, SHALL BE ESTABLISHED BEFORE LAND DISTURBING OPERATIONS BEGIN AND SHALL REMAIN IN PLACE UNTIL FINAL STABILIZATION HAS BEEN ESTABLISHED.
SILT FENCE - MnDOT STANDARD PLAN
INLET PROTECTION - MnDOT STANDARD PLAN
TEMPORARY ROCK CONSTRUCTION ENTRANCE - MnDOT STANDARD PLAN
4. TEMPORARY STABILIZATION - TOPSOIL STOCK PILES AND DISTURBED SOIL AREAS OF THE SITE WHERE CONSTRUCTION ACTIVITY TEMPORARILY CEASES FOR AT LEAST 7 DAYS WILL BE STABILIZED WITH TEMPORARY SEEDING AND MULCH NO LATER THAN 7 DAYS FROM THE LAST CONSTRUCTION ACTIVITY IN THAT AREA. THE TEMPORARY SEED SHALL BE RYE (GRAIN) APPLIED AT THE RATE OF 100 LBS PER ACRE. AFTER SEEDING, EACH AREA SHALL BE MULCHED WITH TWO (2) TONS PER ACRE OF STRAW. THE STRAW MULCH IS TO BE TACKED INTO PLACE BY A DISK WITH THE BLADES SET NEARLY STRAIGHT.
5. ALL DISTURBED PERVIOUS AREAS SHALL BE SEEDED (MnDOT 25-151) UNLESS OTHERWISE NOTED OR SHOWN IN PLANS. THE CONTRACTOR SHALL USE METHOD 3 (BROADCAST SEEDING) AND SHALL TAKE MEASURES TO ENSURE GOOD SEED TO SOIL CONTACT BY RAKING OR OTHER APPROVED METHOD. MnDOT MULCH TYPE I SHALL BE USED ON ALL SEEDED AREAS. ALL SEEDING AND MULCHING PROCEDURES SHALL CONFORM TO THE MnDOT SEEDING MANUAL, 2014 EDITION.
6. THE NORMAL WETTED PERIMETER OF ANY TEMPORARY OR PERMANENT DRAINAGE DITCH OR SWALE THAT DRAINS WATER FROM ANY PORTION OF THE CONSTRUCTION SITE, OR DIVERTS WATER AROUND THE SITE, MUST BE STABILIZED WITHIN 200 LINEAL FEET FROM THE PROPERTY EDGE, OR FROM THE POINT OF DISCHARGE INTO ANY SURFACE WATER WITHIN 24 HOURS AFTER CONNECTING TO A SURFACE WATER.
7. IT IS THE RESPONSIBILITY OF THE CONTRACTOR TO ENSURE THAT SEDIMENT DOES NOT LEAVE THIS SITE. IT IS REQUIRED THAT THE CONTRACTOR INSTALL A STABILIZED VEHICLE EXIT TO KEEP SEDIMENT TRACKING TO A MINIMUM. THE CONTRACTOR SHALL ASSUME COMPLETE RESPONSIBILITY UNTIL ACCEPTANCE OF THE WORK BY THE OWNERS.
8. ANY DEPOSITING OF SEDIMENT OR DEBRIS ON NEW OR EXISTING PAVEMENT, OR IN EXISTING STORM SEWERS SHALL BE REMOVED AFTER EACH RAIN AND AFFECTED AREAS CLEANED. ANY TRACKING OF SEDIMENT OR DEBRIS FROM CONSTRUCTION TRAFFIC ONTO PUBLIC RIGHT OF WAY SHALL BE REMOVED BY THE END OF EACH WORK DAY AND AFFECTED AREAS CLEANED.
9. THE CONTRACTOR SHALL INSPECT THE CONSTRUCTION SITE ONCE EVERY SEVEN DAYS AND WITHIN 24 HOURS AFTER RAIN EVENTS FOR DAMAGE TO EROSION CONTROL DEVICES. IF DAMAGED OR INEFFECTIVE EROSION CONTROL DEVICES ARE DISCOVERED, THEY SHALL BE REPAIRED OR REPLACED. THE CONTRACTOR SHALL MAINTAIN INSPECTION RECORDS, WHICH INCLUDE DATE AND TIME OF INSPECTIONS, DATES OF RAINFALL EVENTS, FINDINGS OF INSPECTIONS, CORRECTIVE ACTIONS TAKEN (INCLUDING DATES AND TIMES), AND DOCUMENTATION OF ANY CHANGES TO THE TEMPORARY OR PERMANENT EROSION CONTROL PLANS MADE DURING CONSTRUCTION.
10. THE CONTRACTOR IS RESPONSIBLE FOR ALL SITE CLEARING, GRUBBING AND REMOVALS WHICH WILL INCLUDE THE FOLLOWING: BITUMINOUS PAVEMENT, CONCRETE CURB AND GUTTER, CONCRETE SIDEWALK AND COMMON EXCAVATION. THE CONTRACTOR SHALL COORDINATE UTILITY WORK WITH THE LOCAL UTILITY COMPANIES.
 REMOVAL OF PAVEMENT AND MISCELLANEOUS STRUCTURES SHALL BE PERFORMED IN ACCORDANCE WITH THE PROVISIONS OF MN/DOT 2104 AND THE FOLLOWING:
11. ALL PROPOSED ELEVATIONS ARE TO TOP OF PAVING, GUTTER FLOWLINE OR FINISHED GRADE, UNLESS NOTED OTHERWISE. PROPOSED ELEVATIONS ARE INTENDED TO PROVIDE POSITIVE DRAINAGE TOWARDS CATCH BASINS AND/OR OUTLETS. THE CONTRACTOR SHALL BE RESPONSIBLE TO PROVIDE THE REQUIRED ELEVATIONS, WHICH WILL PROMOTE POSITIVE DRAINAGE THROUGHOUT THE PROJECT SITE.
12. THE SITE HAS NOT NECESSARILY BEEN DESIGNED TO BALANCE THE ON-SITE MATERIALS. THE CONTRACTOR IS RESPONSIBLE FOR DETERMINING THE EARTHWORK QUANTITY ON THIS SITE. ANY EXCESS MATERIAL DISPOSED OF ON-SITE SHALL BE AT THE APPROVAL OF THE ENGINEER. EXCESS MATERIAL THAT IS UNABLE TO BE DISPOSED OF ON-SITE SHALL BE REMOVED AND DISPOSED OF AT AN OFF-SITE LOCATION BY THE CONTRACTOR. THE CONTRACTOR SHALL IMPORT SUITABLE MATERIAL AS NEEDED.
13. THE CONTRACTOR SHALL NOTIFY ALL APPROPRIATE CITY DEPARTMENTS AND UTILITY COMPANIES 72 HOURS PRIOR TO CONSTRUCTION. ALL NECESSARY PRECAUTIONS SHALL BE TAKEN TO AVOID DAMAGE TO EXISTING UTILITIES.
14. IT SHALL BE THE CONTRACTOR'S RESPONSIBILITY TO VERIFY THE LOCATION AND ELEVATION OF ALL UTILITIES PRIOR TO THE BEGINNING OF CONSTRUCTION.
15. SAFETY NOTICE TO CONTRACTORS: IN ACCORDANCE WITH GENERALLY ACCEPTED CONSTRUCTION PRACTICES, THE CONTRACTOR WILL BE SOLELY AND COMPLETELY RESPONSIBLE FOR CONDITIONS ON THE JOB SITE, INCLUDING SAFETY OF ALL PERSONS AND PROPERTY DURING PERFORMANCE OF THE WORK. THIS REQUIREMENT WILL APPLY CONTINUOUSLY AND NOT BE LIMITED TO NORMAL WORKING HOURS. THE DUTY OF THE ENGINEER OR THE DEVELOPER TO CONDUCT CONSTRUCTION REVIEW OF THE CONTRACTOR'S PERFORMANCE IS NOT INTENDED TO INCLUDE REVIEW OF THE ADEQUACY OF THE CONTRACTOR'S SAFETY MEASURES IN, ON OR NEAR THE CONSTRUCTION SITE.
16. THE CONTRACTOR TO MAINTAIN 2.0% MAX. CROSS SLOPE ON ALL SIDEWALK. SIDEWALK THROUGH DRIVEWAYS SHALL ALSO MAINTAIN A MAX 2.0% CROSS SLOPE.



	DENOTES EXISTING STORM SEWER
	DENOTES PROPOSED PROPERTY LINE
	DENOTES EXISTING PROPERTY LINE
	DENOTES PROPOSED SILT FENCE
	DENOTES CONSTRUCTION LIMITS
	DENOTES PROPOSED INLET PROTECTION
	DENOTES PROPOSED CONCRETE PAVING
	DENOTES PROPOSED PARKING LOT
	DENOTES PROPOSED CONTOUR ANNOTATION
	DENOTES PROPOSED GUTTER OR FINISH ELEVATION (UNLESS OTHERWISE NOTED)
	DENOTES PROPOSED DRAINAGE ARROW
	DENOTES REJECT CURB AND GUTTER

OWNER: I.S.D. 2198
 PO BOX 50
 PRESTON, MN 55965
 CONTACT: RICHARD KEITH
 PH: (507) 765-3809

CIVIL ENGINEER: WIDSETH SMITH NOLTING
 3777 40TH AVENUE NW SUITE 200
 ROCHESTER, MN 55901
 CONTACT: CRAIG BRITTON
 PH: (507) 292-8743



ALL UNDERGROUND AND OVERHEAD UTILITY LOCATIONS SHOWN ARE APPROXIMATE. THERE MAY BE ADDITIONAL UNDERGROUND AND OVERHEAD UTILITIES NOT SHOWN ON THE PLAN THAT MAY BE REQUIRED TO BE REMOVED. IT IS THE CONTRACTORS RESPONSIBILITY TO REQUEST A GOPHER STATE ONE CALL PRIOR TO THE START OF ANY CONSTRUCTION.

WIDSETH SMITH NOLTING
 Engineering | Architecture | Surveying | Environmental

 I HEREBY CERTIFY THAT THIS PLAN, SPECIFICATION OR REPORT WAS PREPARED BY ME OR UNDER MY CLOSE PERSONAL SUPERVISION AND THAT I AM A DULY LICENSED PROFESSIONAL ENGINEER UNDER THE LAWS OF THE STATE OF MINNESOTA.
 CRAIG N. BRITTON DATE: 05/29/2018 LIC. NO. 44228
 FCHS BASEBALL FIELD
 FILLMORE CENTRAL SCHOOL DISTRICT
 HARMONY, MN
GRADING PLAN - BALL FIELD
 SHEET NO. **4**

DATE	SCALE	DRAWN BY	CHECKED BY	JOB NUMBER
MAY 2018	AS SHOWN	B.R.B.	C.N.B.	1070R0117.000

REVISIONS DESCRIPTION	DATE	REV#



Sidewalk Costs (6' Width) = \$24,000
 Curb & Gutter (South Side Only) = \$5,500
 Pavement (3 1/2" Thickness) = \$32,000

WIDSETH SMITH NOLTING
 Engineering | Architecture | Surveying | Environmental

FILLMORE CENTRAL - BASEBALL FIELD
 FILLMORE CENTRAL SCHOOLS
 HARMONY, MN
CONCEPT SITE PLAN

DATE	SCALE	DRAWN BY	CHECKED BY	JOB NUMBER
MAY, 2018	AS SHOWN	BBB	CMB	1080R0078.000

REVISIONS DESCRIPTION	DATE	BY

I HEREBY CERTIFY THAT THIS PLAN, SPECIFICATION OR REPORT IS THE WORK OF ME OR UNDER MY CLOSE PERSONAL SUPERVISION AND THAT I AM A DULY LICENSED PROFESSIONAL ENGINEER UNDER THE LAWS OF THE STATE OF MINNESOTA.
 DATE: ###/###/### LIC. NO. ###

SHEET NO. OF

J:\1070R-Rochester Miscellaneous\1070R0117-Fillmore Central Baseball Field 2018\1070R0117.000-Fillmore Central Baseball Field 2018\CADD\Civil\C-XR-1070R0117.000.dwg Plotted by: Ben Blood 5/17/2018 2:16:31 PM © 2018 WIDSETH SMITH NOLTING